

Key

-  Study Area Boundary
-  County Boundary
-  District Boundary
-  The Broads
-  Accessible GI over 60ha
-  Broads Authority (BA) GI over 60ha
-  3km catchment of Accessible GI over 60ha
-  3km catchment of BA GI over 60ha
-  Strategic Growth Locations*
-  Strategic Growth Locations

NB
Green Infrastructure within The Broads is predominantly wetland. The degree, extent and type of access varies.

The degree, extent and type of access within Nature Reserves also varies

* Areas of Search in South Norfolk

Greater Norwich Green Infrastructure Delivery Plan

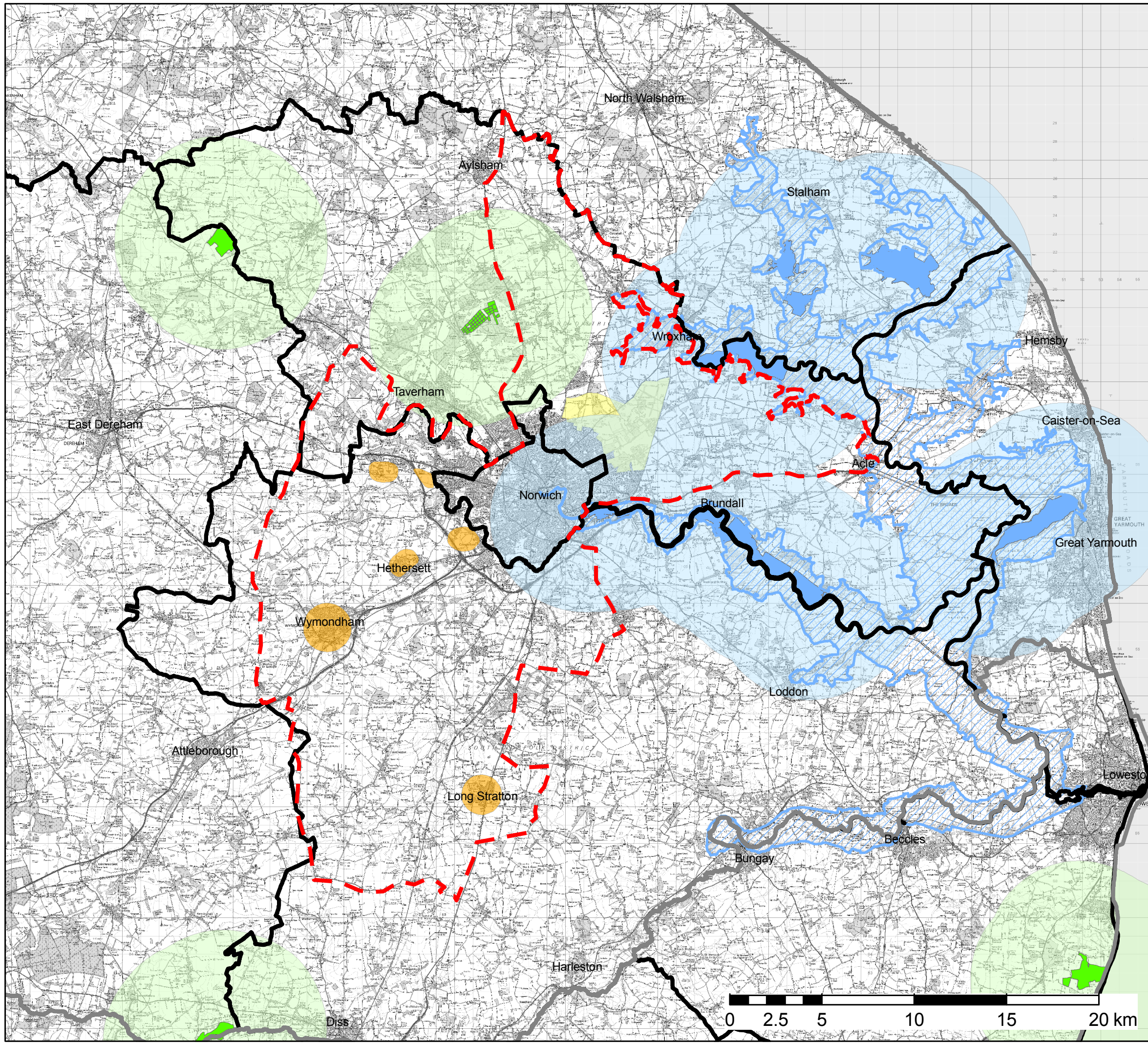
Figure 12

Accessible Green Infrastructure >60ha





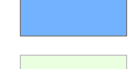
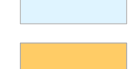
July 2009



Reproduced using information provided by Norfolk Biodiversity Information Service, Norfolk County Council, Norwich City Council, Broadland District Council and South Norfolk District Council. Reproduced from the Ordnance Survey map with the permission of the controller of Her Majesty's Stationery Office. Licence number: 100019747. © CROWN COPYRIGHT.



Key

-  Study Area Boundary
-  County Boundary
-  District Boundary
-  The Broads
-  Accessible GI over 100ha
-  Broads Authority (BA) GI over 100ha
-  5km catchment of Accessible GI over 100ha
-  5km catchment of BA GI over 100ha
-  Strategic Growth Locations*
-  Strategic Growth Locations

NB
Green Infrastructure within The Broads is predominantly wetland. The degree, extent and type of access varies.

The degree, extent and type of access within Nature Reserves also varies

* Areas of Search in South Norfolk

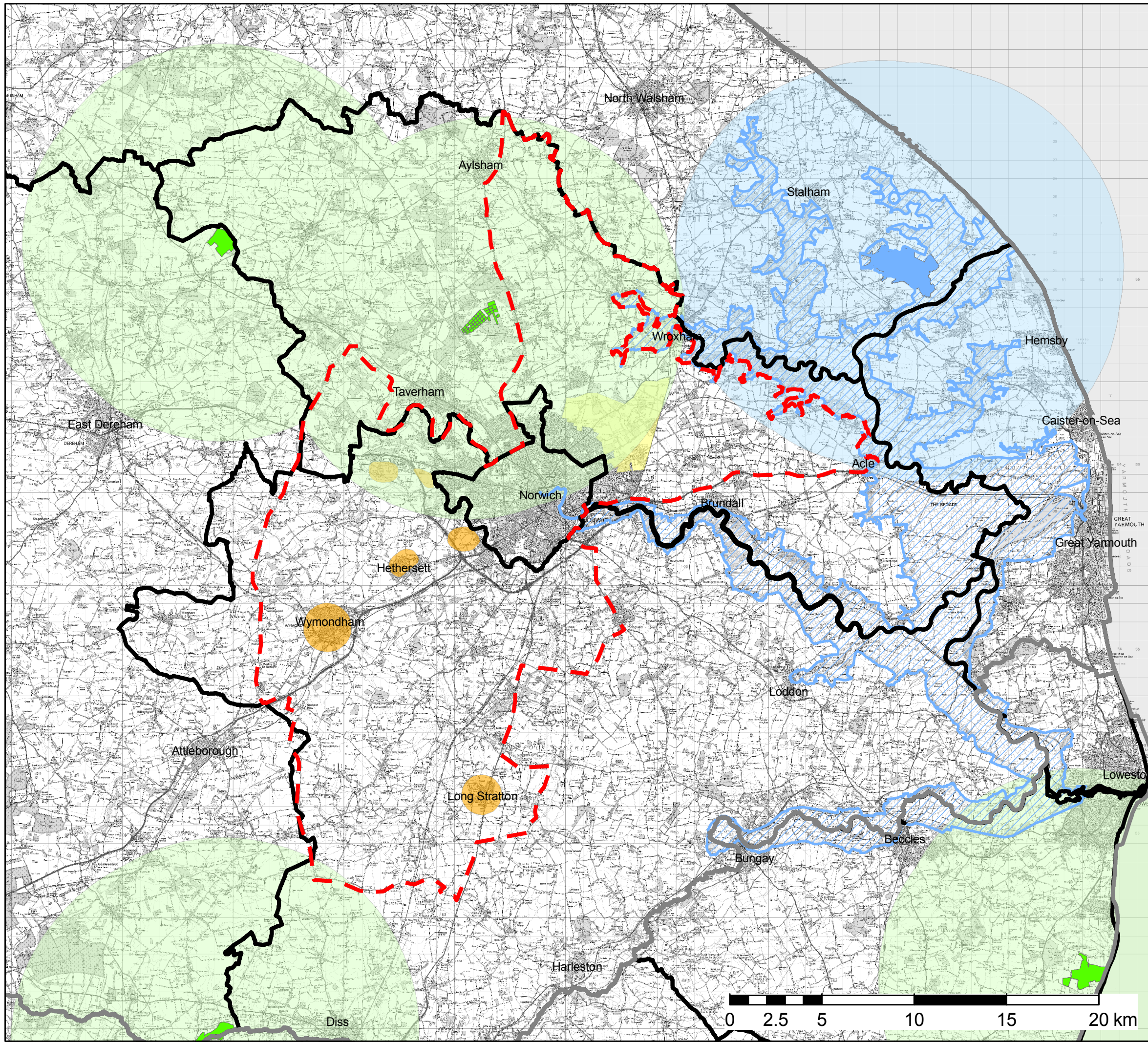
Greater Norwich Green Infrastructure
Delivery Plan

Figure 13





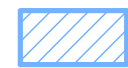


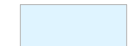

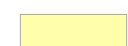
Accessible Green Infrastructure >100ha
July 2009



Reproduced using information provided by Norfolk Biodiversity Information Service, Norfolk County Council, Norwich City Council, Broadland District Council and South Norfolk District Council.
Reproduced from the Ordnance Survey map with the permission of the controller of Her Majesty's Stationery Office. Licence number: 100019747. © CROWN COPYRIGHT.



Key

-  Study Area Boundary
-  County Boundary
-  District Boundary
-  Accessible GI over 500ha
-  The Broads
-  Broads Authority (BA) GI over 500ha
-  10km catchment of Accessible GI over 500ha
-  10km catchment of BA GI over 500ha
-  Strategic Growth Locations*
-  Strategic Growth Locations

NB
Green Infrastructure within The Broads is predominantly wetland. The degree, extent and type of access varies.

The degree, extent and type of access within Nature Reserves also varies

* Areas of Search in South Norfolk

Greater Norwich Green Infrastructure Delivery Plan

Figure 14

Accessible Green Infrastructure >500ha

July 2009



Reproduced using information provided by Norfolk Biodiversity Information Service, Norfolk County Council, Norwich City Council, Broadland District Council and South Norfolk District Council. Reproduced from the Ordnance Survey map with the permission of the controller of Her Majesty's Stationery Office. Licence number: 100019747. © CROWN COPYRIGHT.