

Key

- Study Area Boundary
- County Boundary
- District Boundary
- The Broads
- Waterways
- Cycle Routes
- Public Rights of Way
- National Nature Reserve
- Local Nature Reserve
- Roadside Nature Reserve
- Woodland Trust Sites
- Provision for Children and Young People
- Green corridors
- Amenity open space
- Natural and Semi-natural Greenspace
- Formal Open Space
- Community Woodland
- Strategic Growth Locations*
- Strategic Growth Locations

NB
Green Infrastructure within The Broads is predominantly wetland. The degree, extent and type of access varies.

The degree, extent and type of access within Nature Reserves also varies

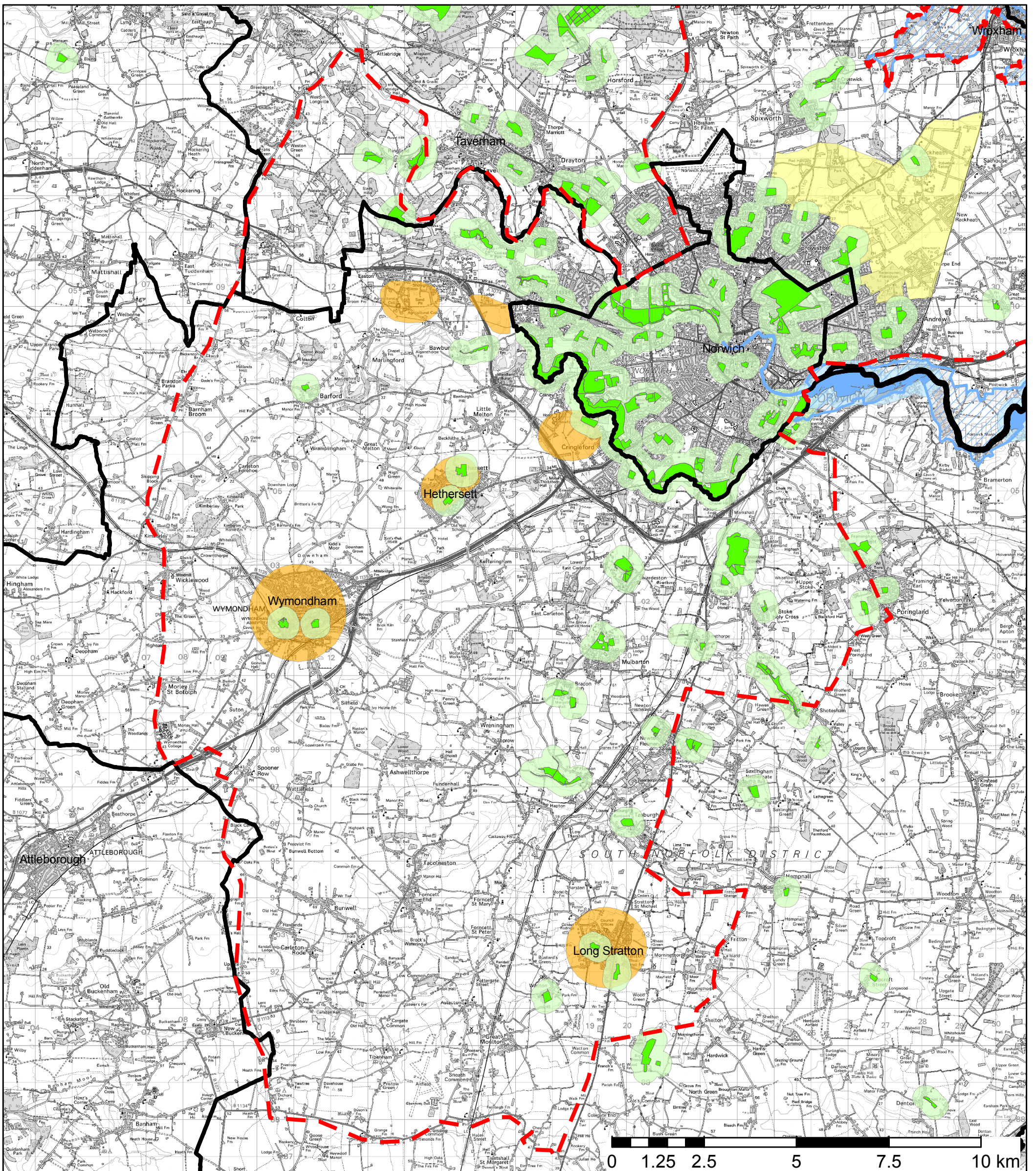
* Areas of Search in South Norfolk

Greater Norwich Green Infrastructure Delivery Plan
Figure 09C

Accessible Green Infrastructure NE
July 2009



Reproduced using information provided by Norfolk Biodiversity Information Service, Norfolk County Council, Norwich City Council, Broadland District Council and South Norfolk District Council.
Reproduced from the Ordnance Survey map with the permission of the controller of Her Majesty's Stationery Office. Licence number: 100019747. © CROWN COPYRIGHT.



Reproduced using information provided by Norfolk Biodiversity Information Service, Norfolk County Council, Norwich City Council, Broadland District Council and South Norfolk District Council.
 Reproduced from the Ordnance Survey map with the permission of the controller of Her Majesty's Stationery Office. Licence number: 100019747. © CROWN COPYRIGHT.

Key

Study Area Boundary

District Boundary

Accessible GI over 2ha

Broads Authority (BA) GI over 2ha

300m catchment of Accessible GI over 2ha

300m catchment of BA GI over 2ha

Strategic Growth Locations*

Strategic Growth Locations

* Areas of Search in South Norfolk

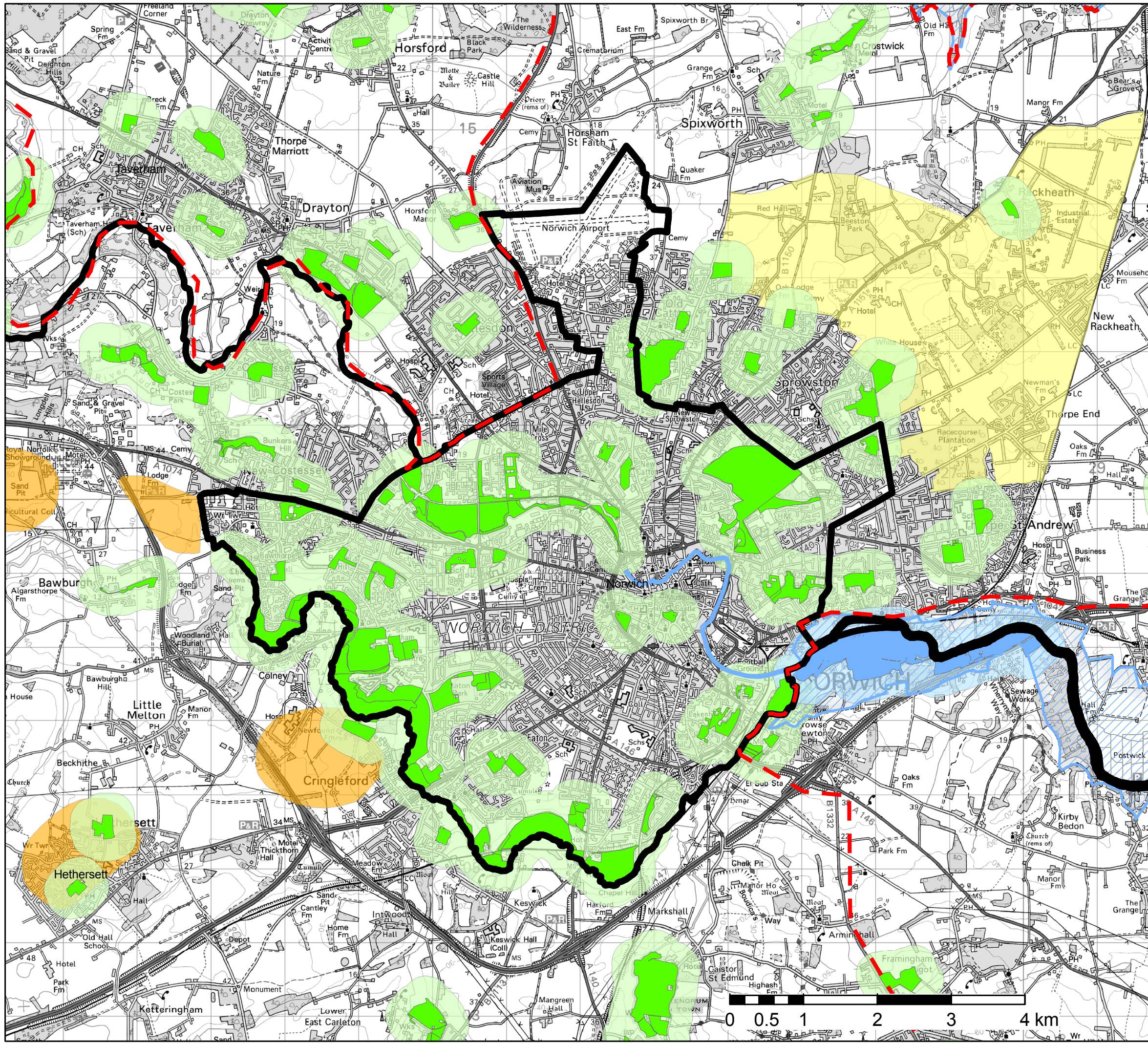
NB
 Green Infrastructure within The Broads is predominantly wetland. The degree, extent and type of access varies.

The degree, extent and type of access within Nature Reserves also varies







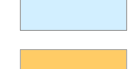
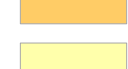
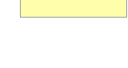
Greater Norwich Green Infrastructure Delivery Plan
 Figure 10A

Accessible Green Infrastructure >2ha SW
 July 2009





Key

-  Study Area Boundary
-  District Boundary
-  The Broads
-  Accessible GI over 2ha
-  Broads Authority (BA) GI over 2ha
-  300m catchment of Accessible GI over 2ha
-  300m catchment of BA GI over 2ha
-  Strategic Growth Locations*
-  Strategic Growth Locations

NB
Green Infrastructure within The Broads is predominantly wetland. The degree, extent and type of access varies.

The degree, extent and type of access within Nature Reserves also varies

* Areas of Search in South Norfolk

Greater Norwich Green Infrastructure
Delivery Plan
Figure 10B
Accessible Green Infrastructure >2ha City
July 2009



Reproduced using information provided by Norfolk Biodiversity Information Service, Norfolk County Council, Norwich City Council, Broadland District Council and South Norfolk District Council.
Reproduced from the Ordnance Survey map with the permission of the controller of Her Majesty's Stationery Office. Licence number: 100019747. © CROWN COPYRIGHT.