

KEY:

-  Study Area Boundary
-  County Boundary
-  District Boundary
-  Broads Authority boundary
-  Built-up areas
-  Woodland Corridors
-  Wetland Corridors
-  Heathland Corridors
-  Core Woodland Areas
-  Wetland Habitat Enhancement Zone
-  Heathland Core Areas
-  Coastal Habitat Zone
-  Broads and Key River Buffer Zone
-  Coastal Habitat Buffer

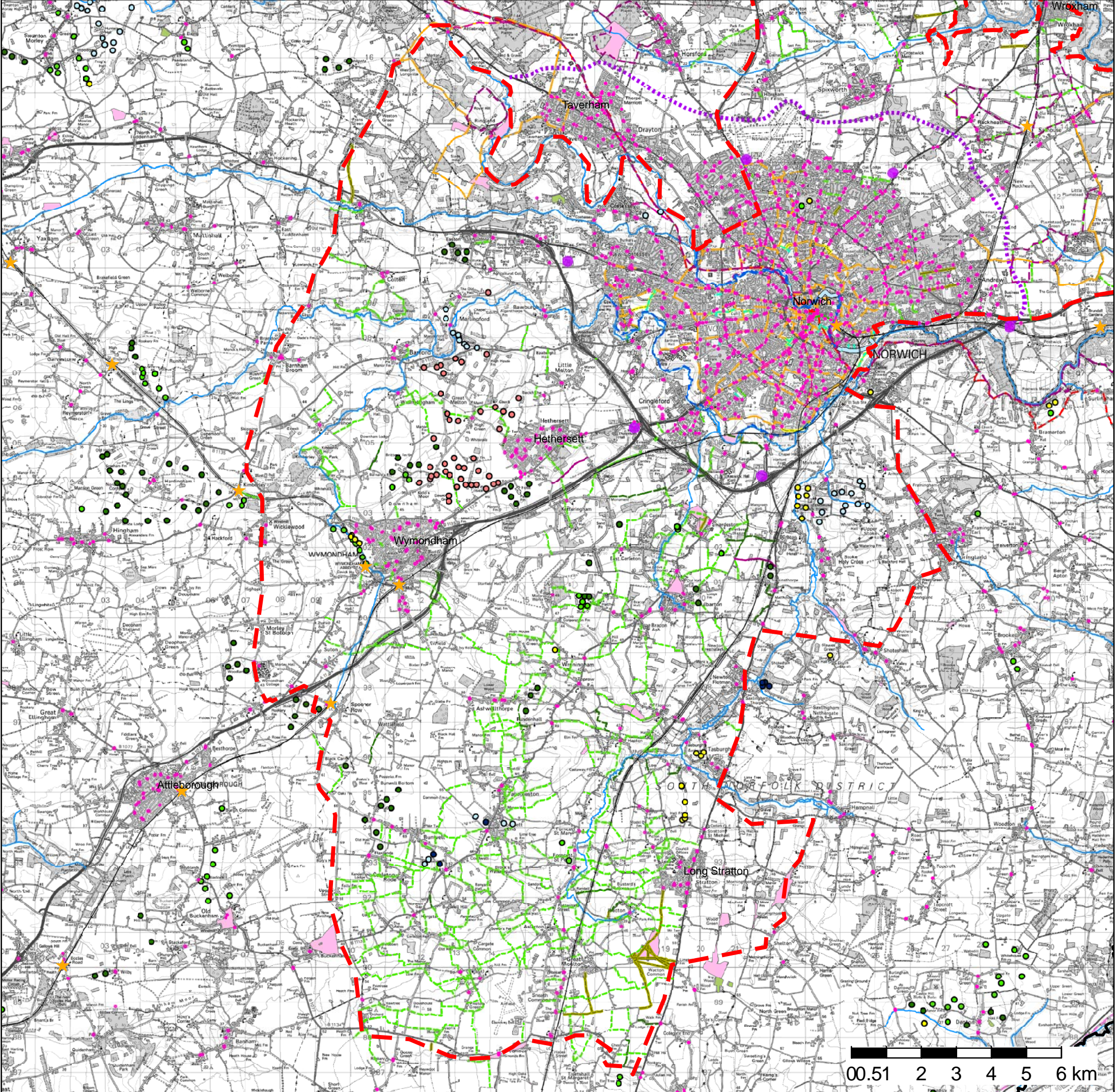
Greater Norwich Green Infrastructure
Delivery Plan

Figure 03

Ecological Networks

July 2009





Reproduced using information provided by Norfolk Biodiversity Information Service, Norfolk County Council, Norwich City Council, Broadland District Council and South Norfolk District Council. Reproduced from the Ordnance Survey map with the permission of the controller of Her Majesty's Stationery Office. Licence number: 100019747. © CROWN COPYRIGHT.

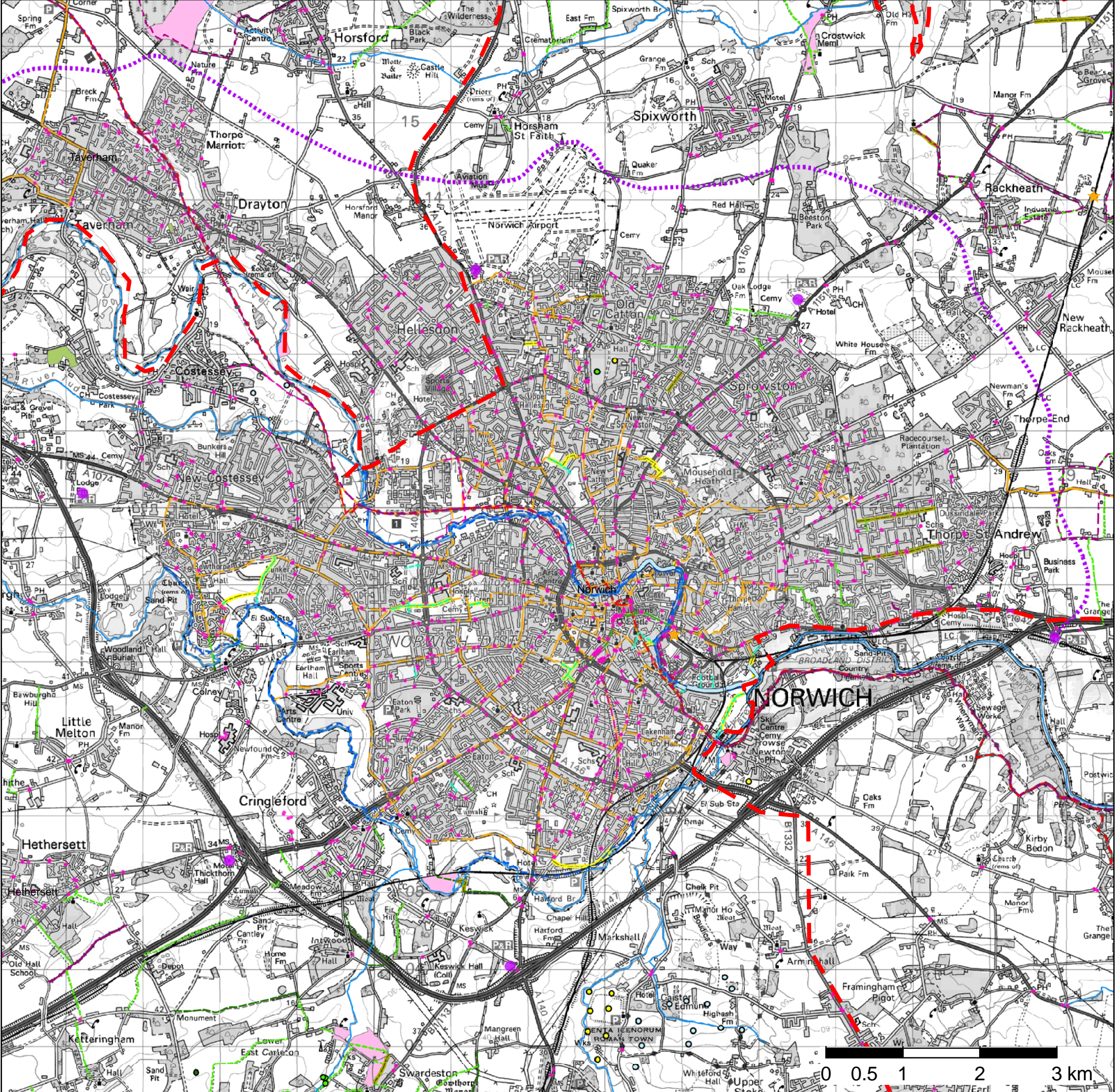
KEY:

- | | | | | | | |
|--|-----------------------------------|--|------------------------------|--------------------------|-----------------------------------|------------------------|
| | Study Area Boundary | | National Cycle Network Route | ES* with access | | Permissive open access |
| | Waterways (not all navigable) | | Sustrans National Route | | Permissive footpath access | |
| | Train stations | | Sustrans Regional Route | | Permissive bridleway/cycle access | |
| | Railway lines | | Other Cycle Routes | | Access for reduced mobility | |
| | Park and Ride sites | | Proposed Cycle Network route | CSS** with access | | Bridleways |
| | Bus stops | | BOAT | | Footpaths | |
| | Distance Routes | | Bridleway | | Open access | |
| | Norwich City 'Green Spine' | | Footpath | | Access for reduced mobility | |
| | NDR | | Restricted Byway | | | |
| | Norwich City River walks | | CROW accessible areas | | | |
| | Norwich City Proposed river walks | | Woodland Trust sites | | | |
| | Norwich City Green links | | | | | |
| | Norwich City Proposed green links | | | | | |

Greater Norwich Green Infrastructure Delivery Plan
Figure 04A
Public Access Networks - SW
 July 2009

* Environmental Stewardship Sites
 ** Countryside Stewardship Sites





Reproduced using information provided by Norfolk Biodiversity Information Service, Norfolk County Council, Norwich City Council, Broadland District Council and South Norfolk District Council.
 Reproduced from the Ordnance Survey map with the permission of the controller of Her Majesty's Stationery Office. Licence number: 100019747. © CROWN COPYRIGHT.

KEY:

- | | | |
|-----------------------------------|------------------------------|-----------------------------------|
| Study Area Boundary | National Cycle Network Route | ES* with access |
| Waterways (not all navigable) | Sustrans National Route | Permissive open access |
| Train stations | Sustrans Regional Route | Permissive footpath access |
| Railway lines | Other Cycle Routes | Permissive bridleway/cycle access |
| Park and Ride sites | Proposed Cycle Network route | Access for reduced mobility |
| Bus stops | BOAT | CSS** with access |
| Distance Routes | Bridleway | Bridleways |
| Norwich City 'Green Spine' | Footpath | Footpaths |
| NDR | Restricted Byway | Open access |
| Norwich City River walks | CROW accessible areas | Access for reduced mobility |
| Norwich City Proposed river walks | Woodland Trust sites | |
| Norwich City Green links | | |
| Norwich City Proposed green links | | |

Greater Norwich Green Infrastructure Delivery Plan
Figure 04B
 Public Access Networks - City
 July 2009

* Environmental Stewardship Sites
 ** Countryside Stewardship Sites