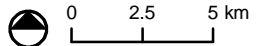


KEY

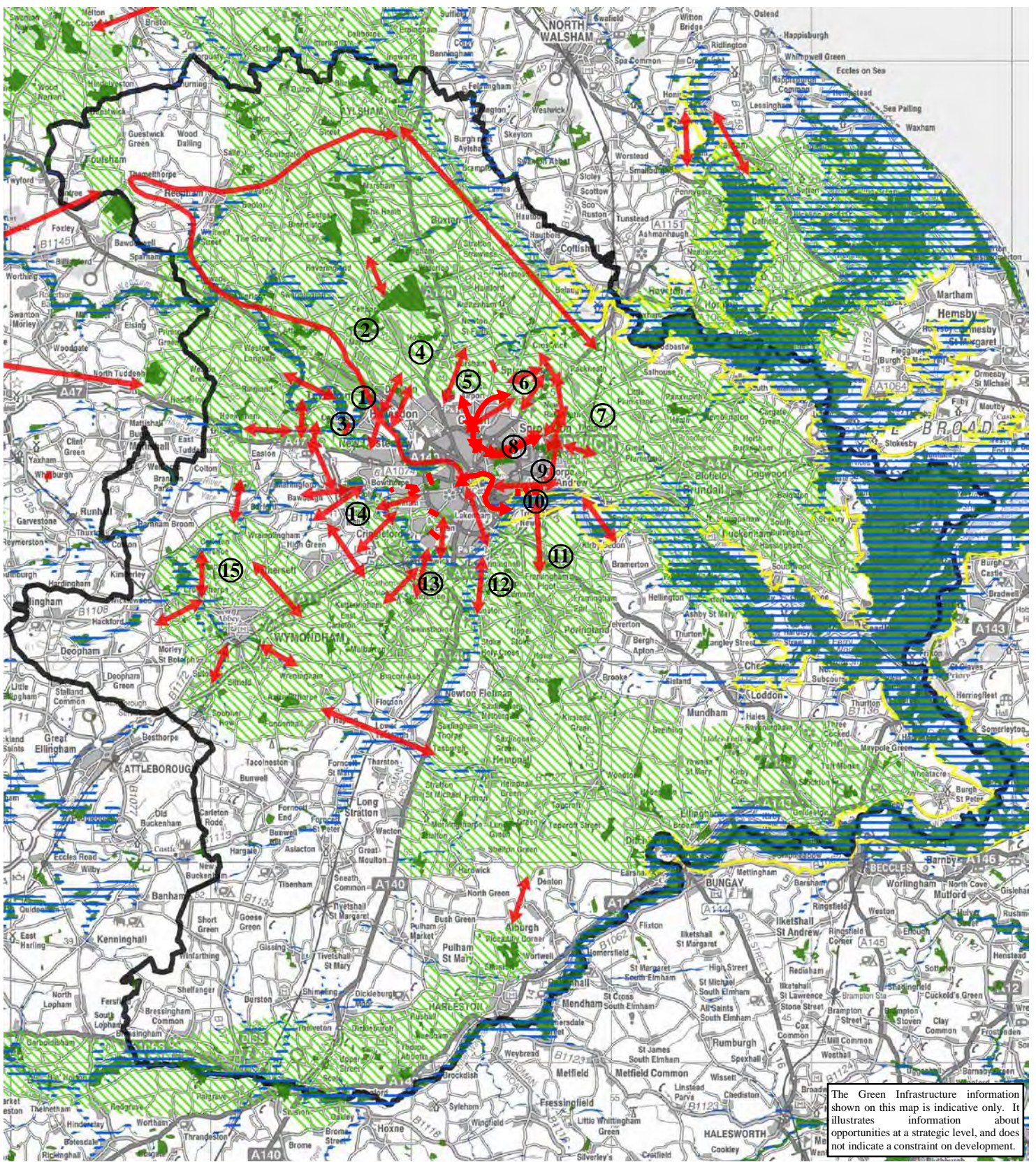
- Proposed Northern Distributor
- Proposed Long Stratton Bypass
- Unfenced Footbridge
- Dual carriageway
- Primary Route
- Main road
- Secondary road
- Narrow road with passing places
- Station, (a) principal
- Broads Authority Area
- Study Area

This map is based on Ordnance Survey material with the permission of Ordnance Survey on behalf of the Controller of Her Majesty's Stationery Office © Crown copyright. Unauthorised reproduction infringes Crown copyright and may lead to prosecution or civil proceedings. OS Licence Number 100019340 2007



F:\Projects\11104901_Gtr_Norwich_GI_Strat\GIS\Projects\september_rev\11104901_04_19_transport_A4.mxd

Figure 4.19
Transport/Service
Infrastructure and Connections

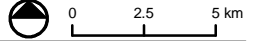


The Green Infrastructure information shown on this map is indicative only. It illustrates information about opportunities at a strategic level, and does not indicate a constraint on development.

KEY

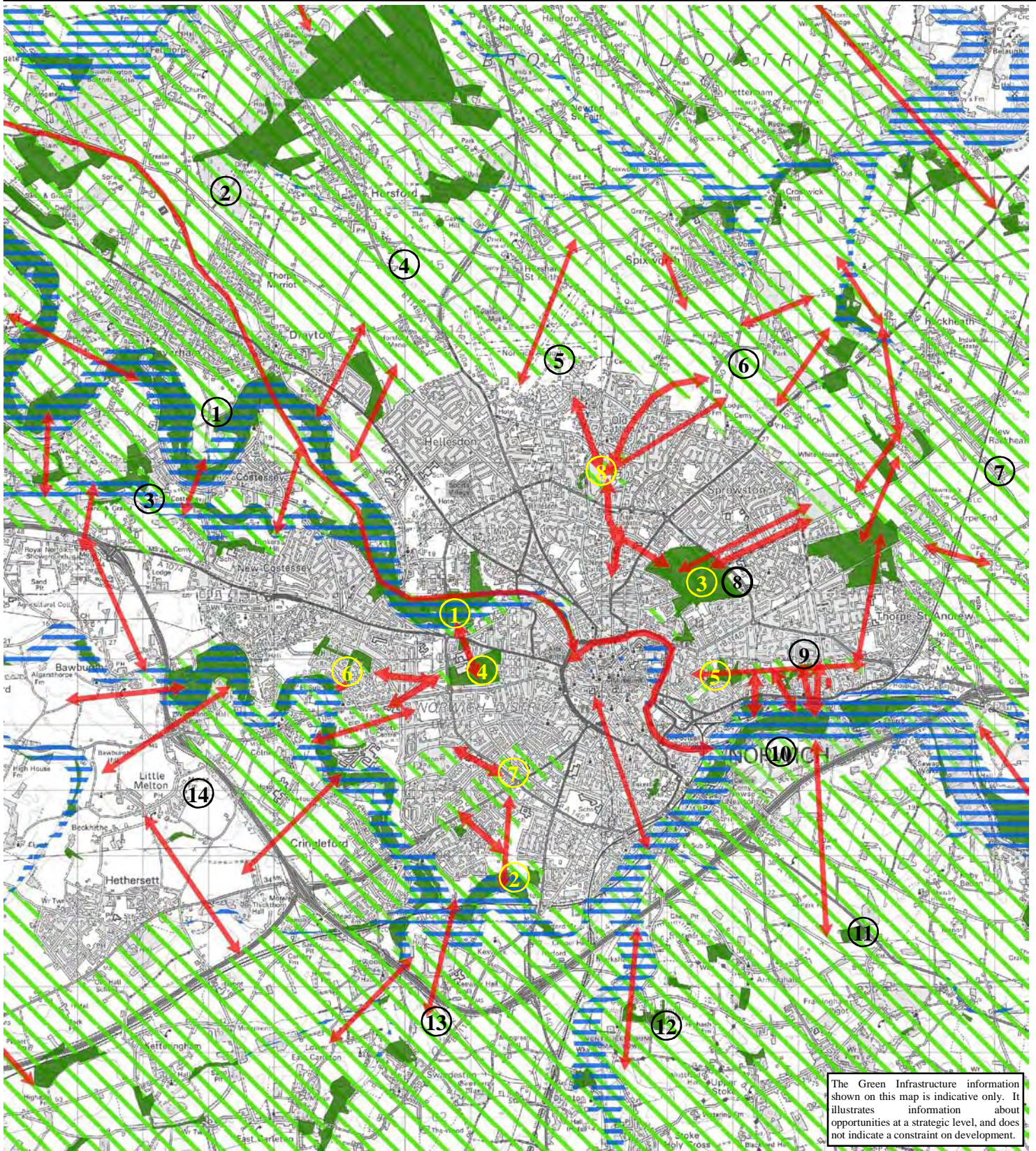
- Existing Core Areas
- Priority Habitat Enhancement and Creation Areas
- Priority Wetland Habitat Enhancement and Creation Areas
- Priority Links
- 1 Fringe Action Areas
- Broads Authority Area
- Study Area

This map is based on Ordnance Survey material with the permission of Ordnance Survey on behalf of the Controller of Her Majesty's Stationery Office © Crown copyright. Unauthorised reproduction infringes Crown copyright and may lead to prosecution or civil proceedings. OS Licence Number 100019340 2007



F:\Projects\11104901_Gtr_Norwich_GI_Strat\GIS\Projects\september_revs\11104901_05_01_biodiv_network.mxd

Figure 5.1
The Proposed Ecological Network: Greater Norwich Area



KEY

- Existing Core Areas
- Priority Habitat Enhancement and Creation Areas
- Priority Wetland Habitat Enhancement and Creation Areas
- Priority Links
- 1 Fringe Action Areas
- 1 Urban Action Areas

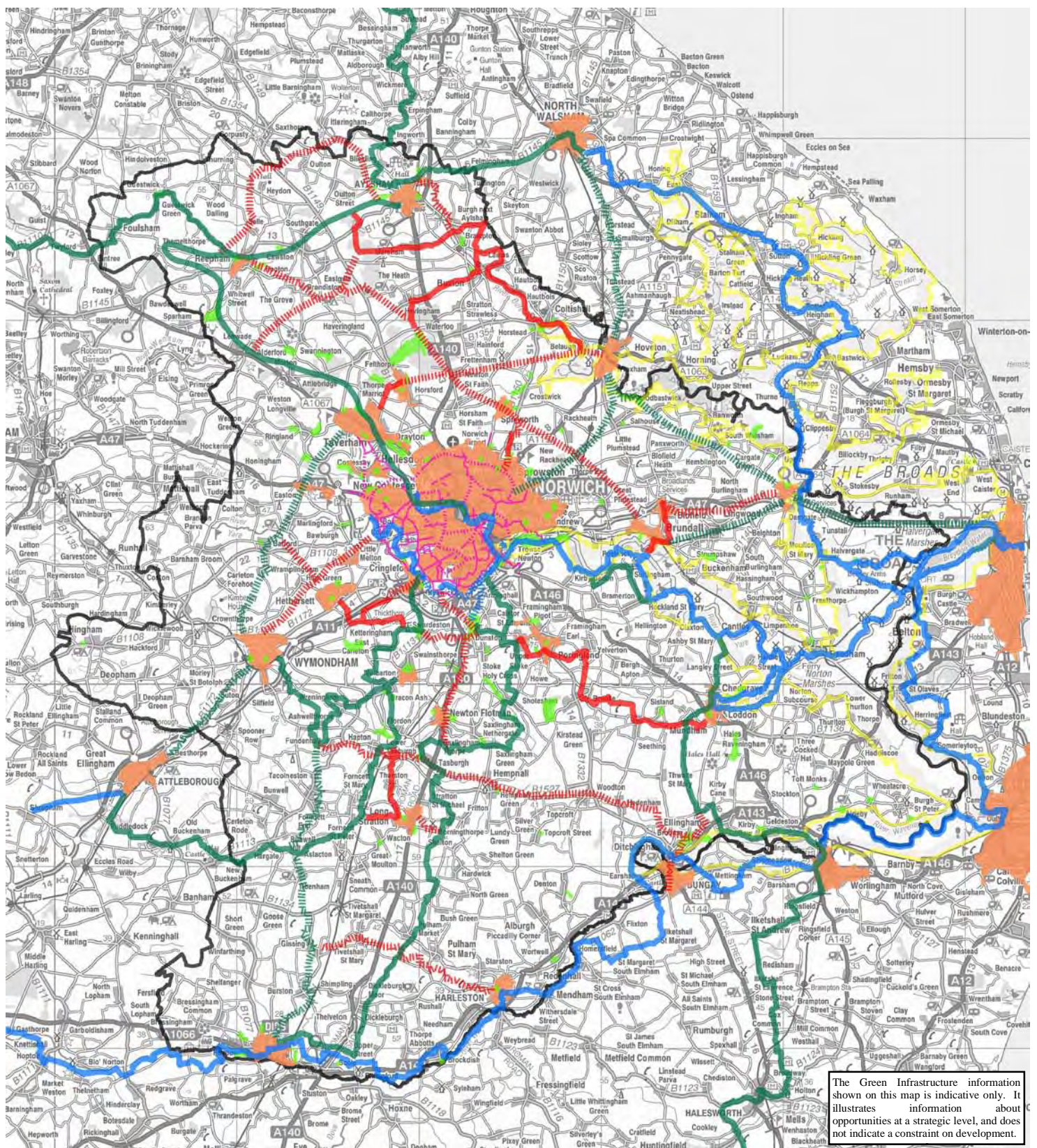
This map is based on Ordnance Survey material with the permission of Ordnance Survey on behalf of the Controller of Her Majesty's Stationery Office © Crown copyright. Unauthorised reproduction infringes Crown copyright and may lead to prosecution or civil proceedings. OS Licence Number 100019340 2007



0 0.5 1 km

F:\Projects\11104901_Gtr_Norwich_GI_Strat\GIS\Projects\september_revs\11104901_05_02.mxd

Figure 5.2
 The Proposed Ecological Network:
 Norwich Urban Area and Fringes



KEY

Primary Network

- Existing Blue Way
- Existing Green Way
- - - - - Opportunity for New Green Way
- - - - - Opportunity for New Blue Way

Secondary Network

- Existing Red Way
- Existing Pink Way
- - - - - Opportunity for New Red Way
- - - - - Opportunity for New Pink Way

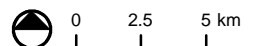
■ Existing Strategic Open Space

■ Existing Urban Areas

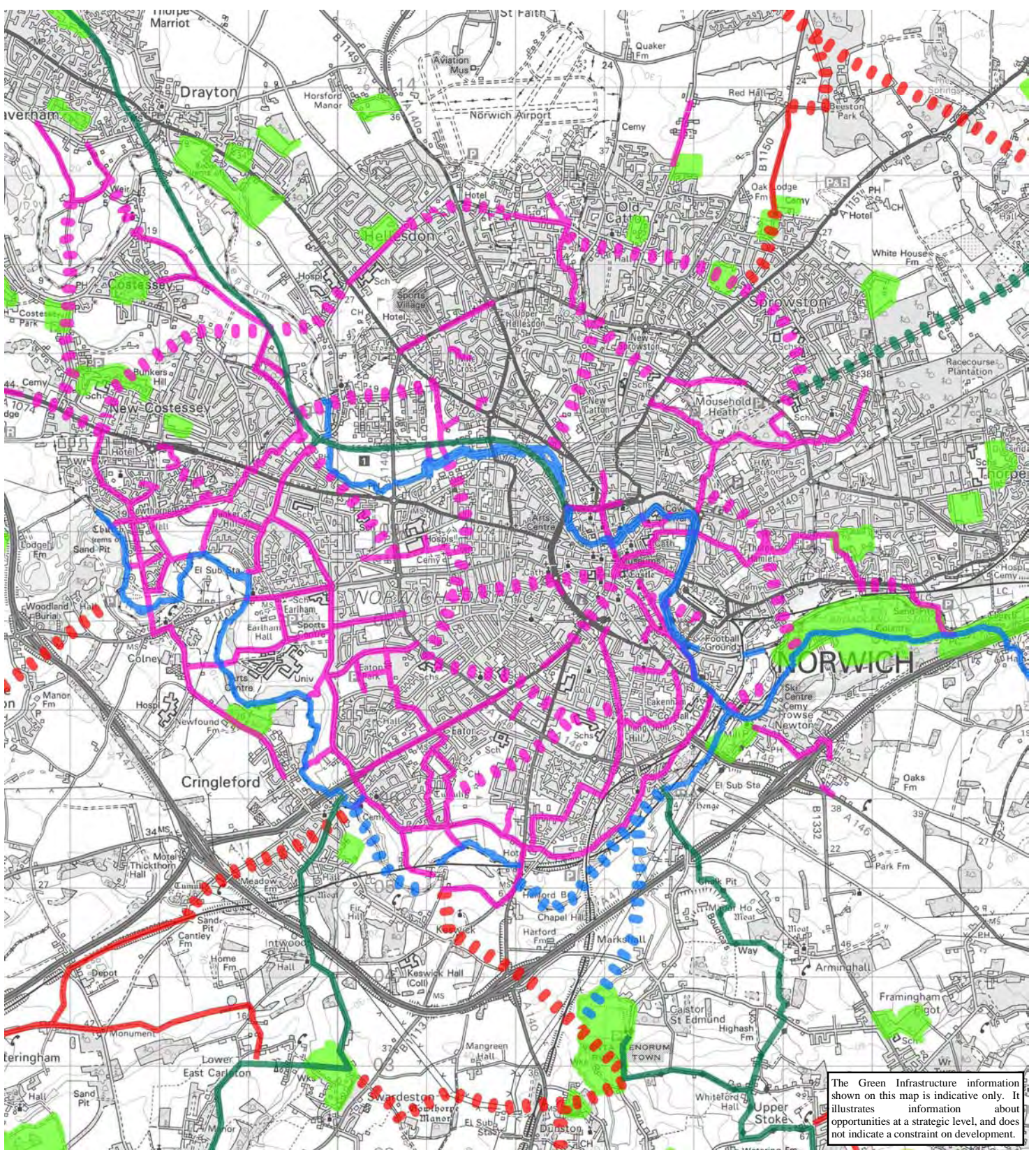
Broads Authority Area

Study Area

This map is based on Ordnance Survey material with the permission of Ordnance Survey on behalf of the Controller of Her Majesty's Stationery Office © Crown copyright. Unauthorised reproduction infringes Crown copyright and may lead to prosecution or civil proceedings. OS Licence Number 100019340 2007



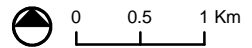
F:\Projects\11104901_Gir_Norwich_GI_Strat\GIS\Projects\september_revs\11104901_06_01.mxd



The Green Infrastructure information shown on this map is indicative only. It illustrates information about opportunities at a strategic level, and does not indicate a constraint on development.

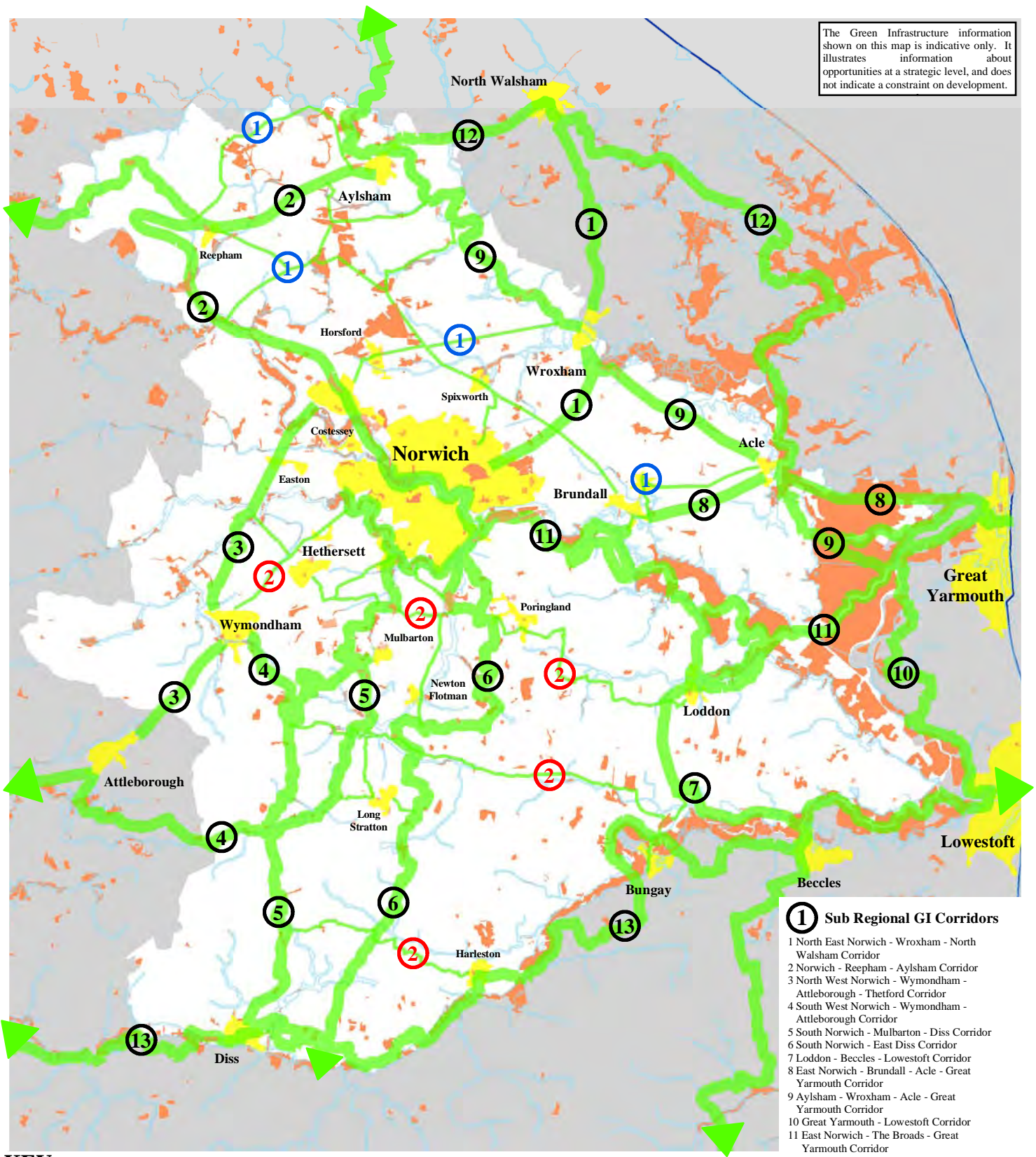
- KEY**
- | | | |
|-------------------------------|------------------------------|---|
| Primary Network | Secondary Network | Existing Strategic Open Space
(NB: no data available for City of Norwich) |
| Existing Blue Way | Existing Red Way | |
| Existing Green Way | Existing Pink Way | |
| Opportunity for New Green Way | Opportunity for New Red Way | |
| Opportunity for New Blue Way | Opportunity for New Pink Way | |

This map is based on Ordnance Survey material with the permission of Ordnance Survey on behalf of the Controller of Her Majesty's Stationery Office © Crown copyright. Unauthorised reproduction infringes Crown copyright and may lead to prosecution or civil proceedings. OS Licence Number 100019340 2007









F:\Projects\11104901_Gir_Norwich_GL_Strat\GIS\Projects\september_revs\11104901_06_02_revB.mxd

The Green Infrastructure information shown on this map is indicative only. It illustrates information about opportunities at a strategic level, and does not indicate a constraint on development.



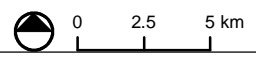
KEY

-  Sub-Regional Green Infrastructure Corridors
-  Local Green Infrastructure Corridors
-  Existing Main Urban Areas
-  Existing Green Infrastructure Sites (Strategic Open Spaces & Core Biodiversity Areas)

-  River Valleys/Wetlands
-  Targeted Environmental and Access Improvements in the Wider Countryside

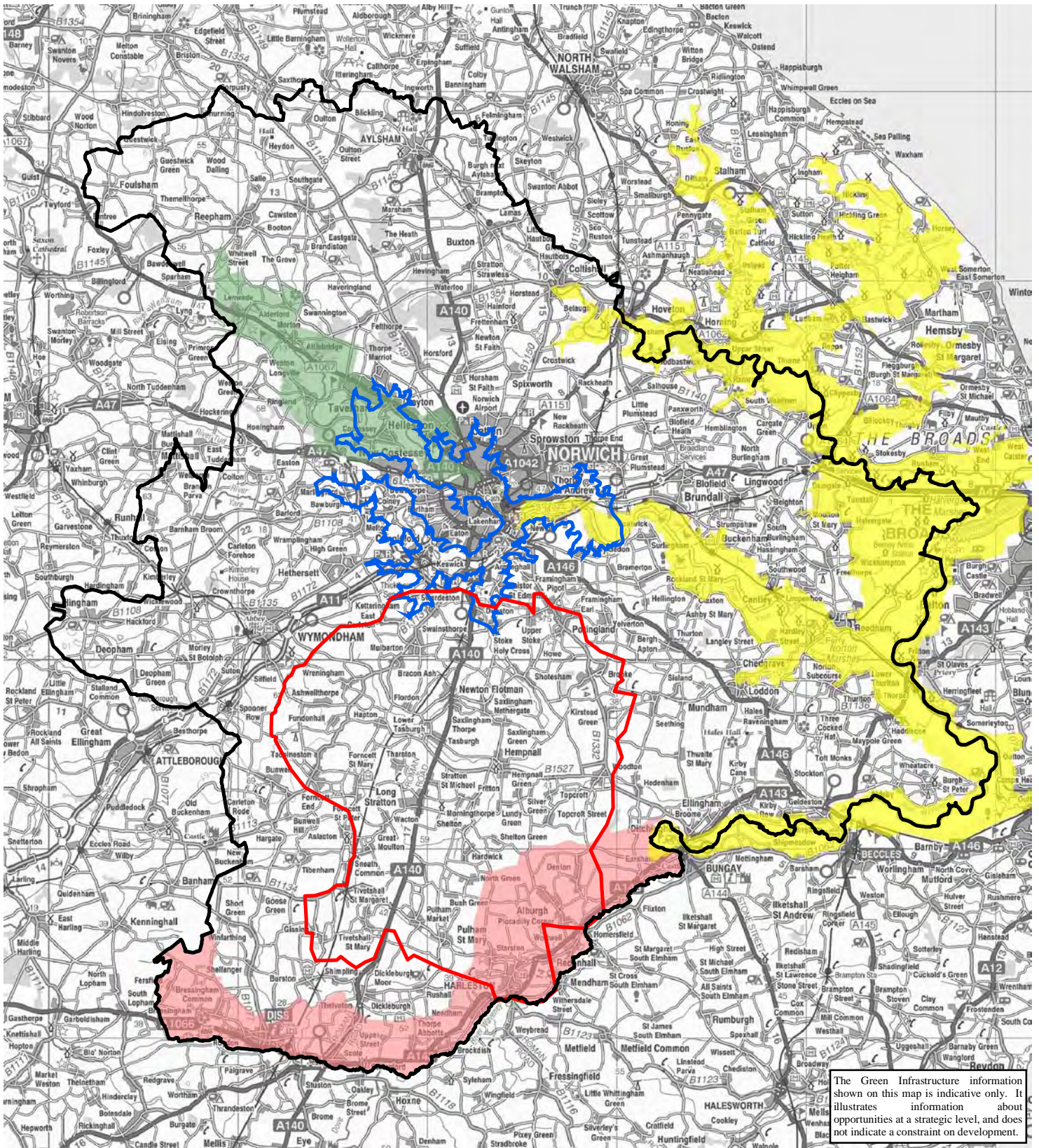
- ①** Sub Regional GI Corridors
 - 1 North East Norwich - Wroxham - North Walsham Corridor
 - 2 Norwich - Reepham - Aylsham Corridor
 - 3 North West Norwich - Wymondham - Attleborough - Thetford Corridor
 - 4 South West Norwich - Wymondham - Attleborough Corridor
 - 5 South Norwich - Mulbarton - Diss Corridor
 - 6 South Norwich - East Diss Corridor
 - 7 Loddon - Beccles - Lowestoft Corridor
 - 8 East Norwich - Brundall - Acle - Great Yarmouth Corridor
 - 9 Aylsham - Wroxham - Acle - Great Yarmouth Corridor
 - 10 Great Yarmouth - Lowestoft Corridor
 - 11 East Norwich - The Broads - Great Yarmouth Corridor
 - 12 Acle - North Walsham - Aylsham - Cromer Corridor
 - 13 Lowestoft - Beccles - Bungay - Harleston - Diss - Thetford Corridor
- ①** Northern Greater Norwich Area Local GI Corridor Network
- ②** Southern Greater Norwich Area Local GI Corridor Network

This map is based on Ordnance Survey material with the permission of Ordnance Survey on behalf of the Controller of Her Majesty's Stationery Office © Crown copyright. Unauthorised reproduction infringes Crown copyright and may lead to prosecution or civil proceedings. OS Licence Number 100019340 2007



F:\Projects\11104901_Gtr_Norwich_GI_Strat\GIS\Projects\september_revs\11104901_07_01.mxd

Figure 7.1
The Proposed Green Infrastructure Network for the Greater Norwich Area

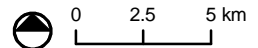


The Green Infrastructure information shown on this map is indicative only. It illustrates information about opportunities at a strategic level, and does not indicate a constraint on development.

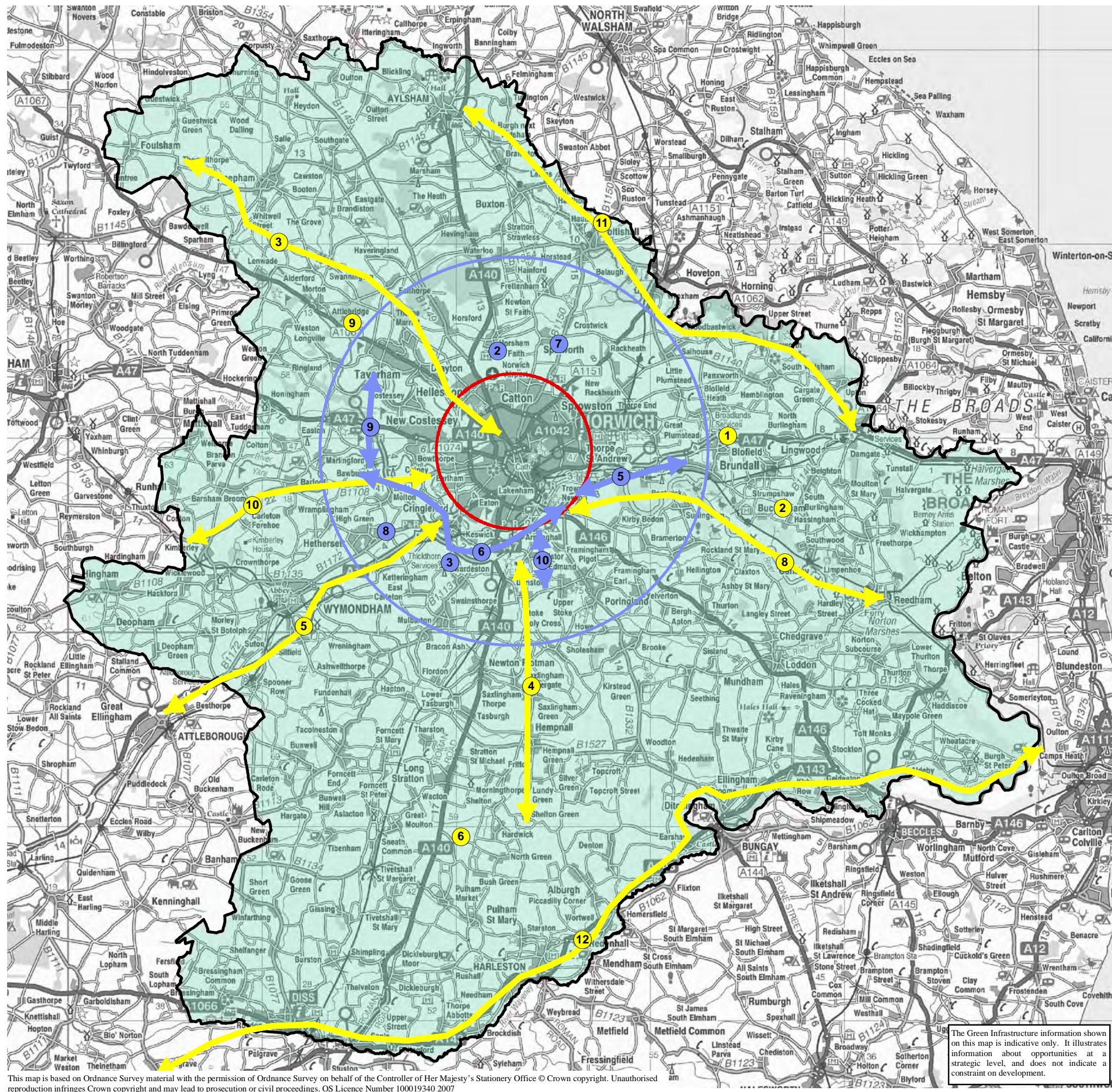
KEY

- Norwich Fringe Project
- Wensum Valley Project
- Upper Waveney Project
- South Norfolk Claylands Project
- Broads Authority Area
- Norwich River Valleys Strategy
- Study Area

This map is based on Ordnance Survey material with the permission of Ordnance Survey on behalf of the Controller of Her Majesty's Stationery Office © Crown copyright. Unauthorised reproduction infringes Crown copyright and may lead to prosecution or civil proceedings. OS Licence Number 100019340 2007



F:\Projects\11104901_Gtr_Norwich_GI_Strat\GIS\Projects\september_revs\11104901_08_01_mgmt_ini.mxd



1 Norwich Urban Area Projects

- 1 - Mapping Accessible Green Networks
- 2 - Children's Play Study
- 3 - Green Grid Strategy for Norwich
- 4 - Norwich Crossings and Bridges – Whitingham (Phase 1)
- 5 - The Wensum River Parkway, Norwich
- 6 - The South Norwich Cycle Loop
- 7 - City Centre Community Gardens
- 8 - Norwich Crossings and Bridges - Whitingham (Phase 2)
- 9 - Mulbarton – Swardston Green Way
- 10 - Promoting Use of Rivers for Transport
- 11 - The Yare River Parkway (Phase Two)
- 12 - South West Norwich Ecological Networks (Phase 2)

(Locations not mapped)

1 Norwich Fringe Projects

- 1 - Norwich Fringes Wooded Ridge Project
- 2 - Catton Park
- 3 - Norfolk and Norwich Hospital Health Woods
- 4 - Norwich Green Gateways Project
- 5 - Whittington County Park Eastern Cycle Links
- 6 - The Yare River Parkway (Phase 1)
- 7 - Mousehold Heath and Northeast Norwich Heathland
- 8 - South West Norwich Ecological Networks (Phase 1)
- 9 - Yare and Wensum Valley Link
- 10 - Lakenham Way Enhancements

(Only project references in **bold** shown on map)

1 Norwich Fringe Environs Projects

- 1 - Community Woodlands Scheme
- 2 - The Mid Yare National Nature Reserve
- 3 - Marriott's Way Route Enhancements
- 4 - Tas Valley Blue Way
- 5 - Norwich – Wymondham – Attleborough – Thetford Green Way
- 6 - South Norfolk Claylands Landscape Project
- 7 - Rural Settlements Doorstep Greenspaces
- 8 - Norwich to Broads via Yare Valley Blue Way
- 9 - North West Norwich Forest
- 10 - Yare Valley west of Norwich Blue Way
- 11 - Bure Valley Blue Way
- 12 - Waveney Valley Blue Way

(Only project references in **bold** shown on map)

1 Greater Norwich Area - Wide Thematic Projects

- 1 - Green Infrastructure in School Grounds Grant Aid
- 2 - New County Parks
- 3 - Historic Park Restoration Fund
- 4 - The Sanctuary Project
- 5 - Amenity Parks and Allotments
- 6 - The Greater Norwich Area Waterway Crossings & Gateway Project
- 7 - Urban Ecological Networks Stepping Stones
- 8 - Greater Norwich Community Landmarks Project
- 9 - Green Gym
- 10 - Environmental Training Programme
- 11 - Youth Engagement Project
- 12 - Green Way and Blue Way Route Design Guide
- 13 - Quiet Lanes Project
- 14 - Sustainable Transport
- 15 - Green Infrastructure Guidelines for Developers
- 16 - Bikes on Buses and Trains
- 17 - Safe Crossings
- 18 - River Interpretation Strategy

(Locations not mapped)

See Section 6.2 of the Strategy Report for details of the potential projects.

This map is based on Ordnance Survey material with the permission of Ordnance Survey on behalf of the Controller of Her Majesty's Stationery Office © Crown copyright. Unauthorised reproduction infringes Crown copyright and may lead to prosecution or civil proceedings. OS Licence Number 100019340 2007

Figure 8.2
Potential Green
Infrastructure Projects