

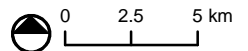
The Green Infrastructure information shown on this map is indicative only. It illustrates information about opportunities at a strategic level, and does not indicate a constraint on development.

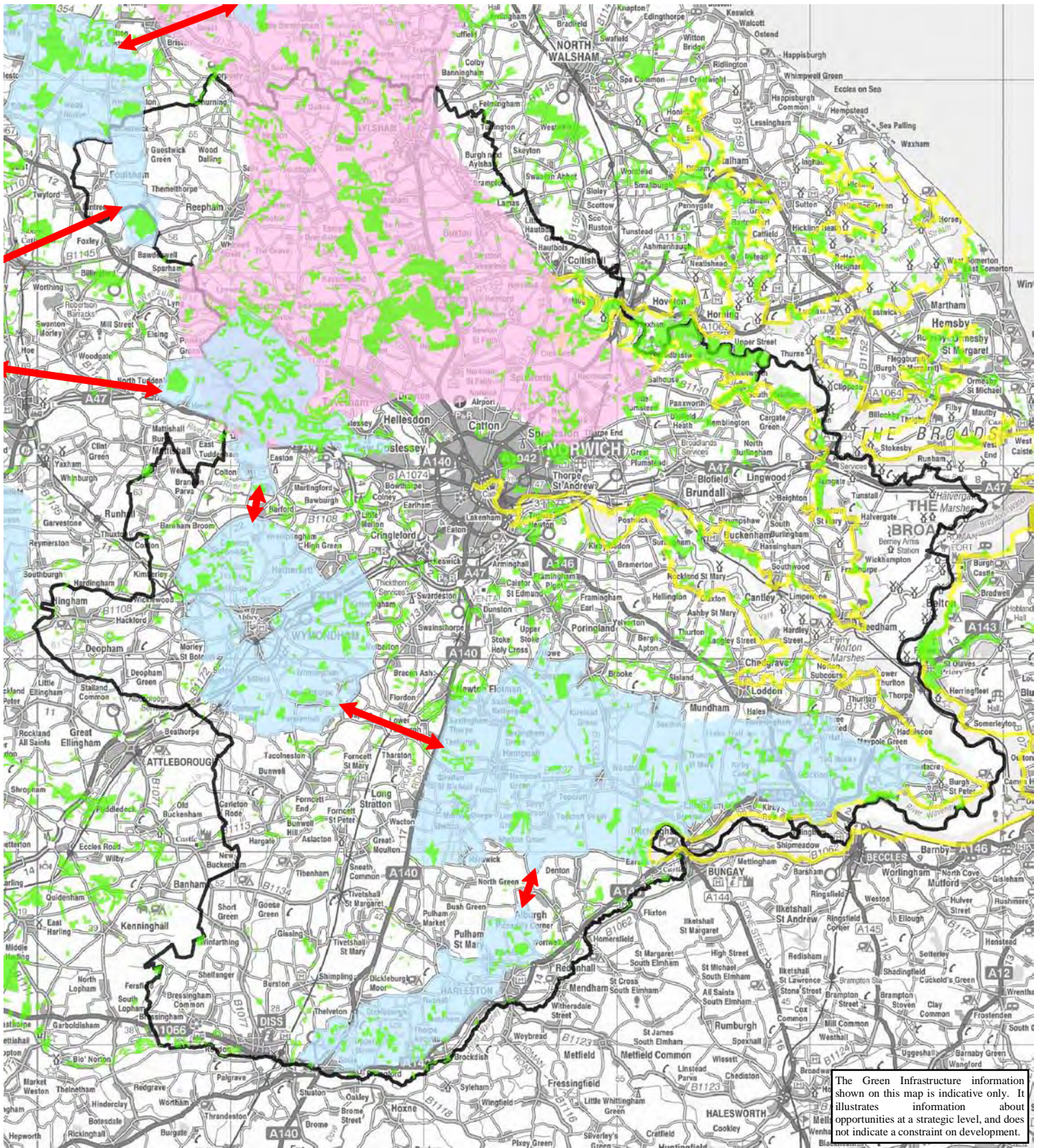
KEY

- Local Nature Reserves (LNR)
- Special Protection Area (SPA)
- County Wildlife Sites (CWS)
- Ramsar Site
- National Nature Reserve (NNR)
- Broads Authority Area
- Special Areas of Conservation (SAC)
- Site of Special Scientific Interest (SSSI)
- Study Area

This map is based on Ordnance Survey material with the permission of Ordnance Survey on behalf of the Controller of Her Majesty's Stationery Office © Crown copyright. Unauthorised reproduction infringes Crown copyright and may lead to prosecution or civil proceedings. OS Licence Number 100019340 2007

F:\Projects\11104901_Gir_Norwich_GI_Strat\GIS\Projects\september_revs\11104901_04_09.mxd





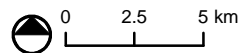
The Green Infrastructure information shown on this map is indicative only. It illustrates information about opportunities at a strategic level, and does not indicate a constraint on development.

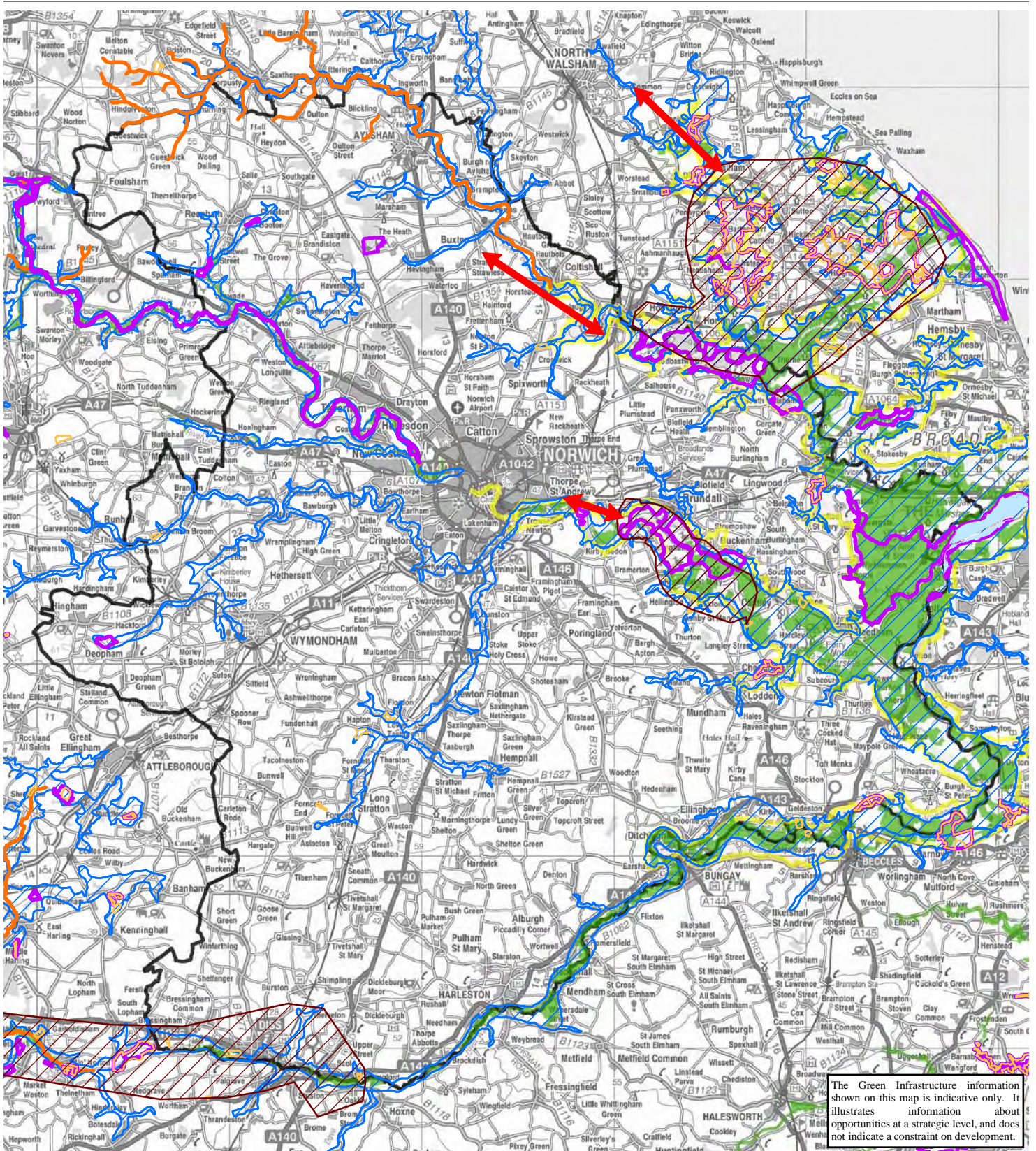
KEY

- Key Opportunities for Woodland Habitat Enhancement and Creation
- Key Opportunities for Wood Pasture and Heathland Habitat Enhancement and Creation
- Existing Woodland
- Woodland Corridors
- Broads Authority Area
- Study Area

This map is based on Ordnance Survey material with the permission of Ordnance Survey on behalf of the Controller of Her Majesty's Stationery Office © Crown copyright. Unauthorised reproduction infringes Crown copyright and may lead to prosecution or civil proceedings. OS Licence Number 100019340 2007

F:\Projects\11104901_Gr_Norwich_GI_Strat\GIS\Projects\september_rev\11104901_04_10_A4.mxd





The Green Infrastructure information shown on this map is indicative only. It illustrates information about opportunities at a strategic level, and does not indicate a constraint on development.

- KEY**
- Fens Corridors
 - Opportunities for Fen Habitat Enhancement and Creation
 - Existing Mudflats
 - Broads Authority Area
 - Existing Chalk Rivers
 - Existing Reedbeds
 - Existing Coastal and Floodplain Grazing Marsh
 - Study Area
 - Existing Fens
 - Opportunities for Reedbeds Enhancement and Creation

This map is based on Ordnance Survey material with the permission of Ordnance Survey on behalf of the Controller of Her Majesty's Stationery Office © Crown copyright. Unauthorised reproduction infringes Crown copyright and may lead to prosecution or civil proceedings. OS Licence Number 100019340 2007

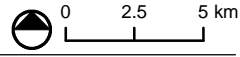
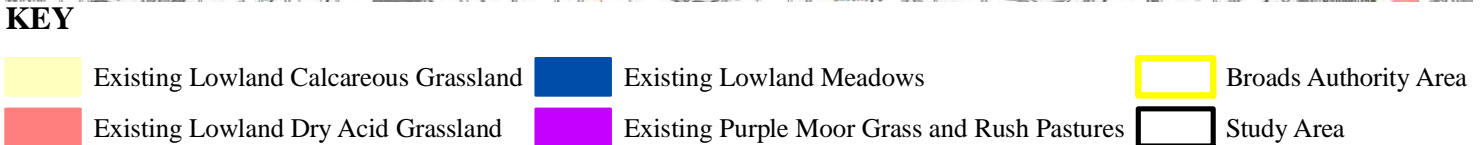
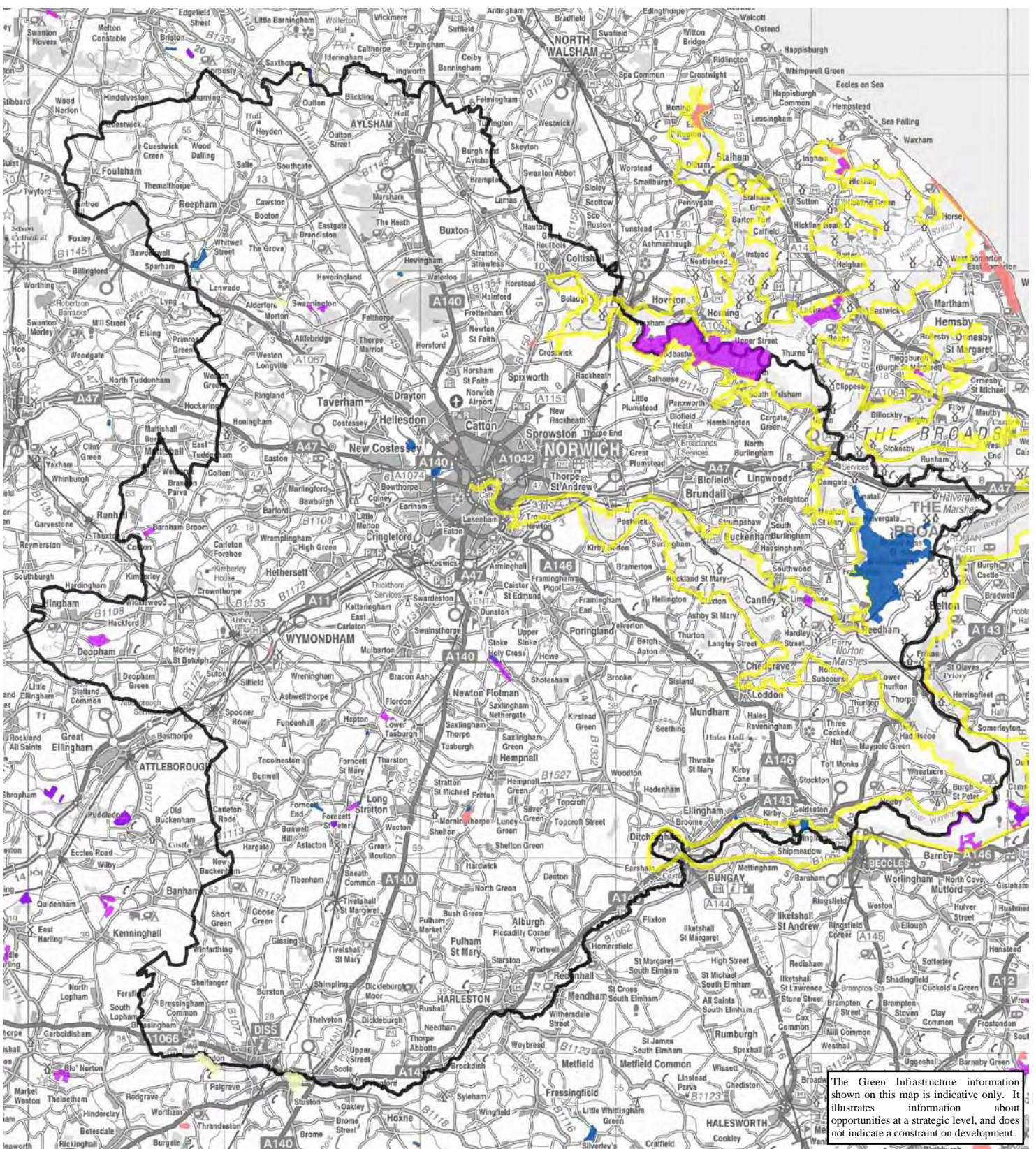
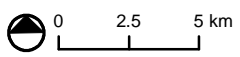


Figure 4.11
 Biodiversity Assessment:
 Wetland/Open Water Habitats

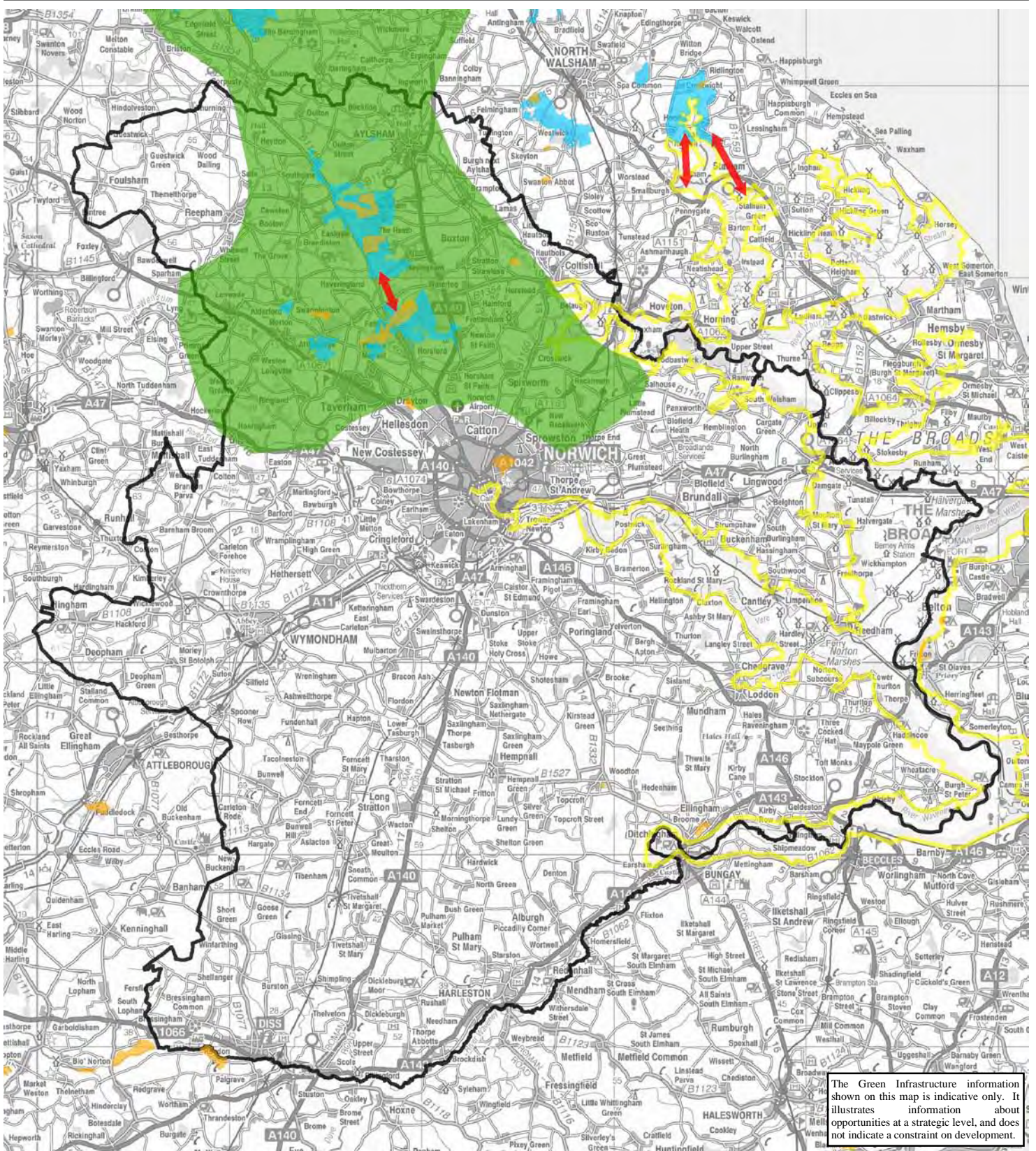


This map is based on Ordnance Survey material with the permission of Ordnance Survey on behalf of the Controller of Her Majesty's Stationery Office © Crown copyright. Unauthorised reproduction infringes Crown copyright and may lead to prosecution or civil proceedings. OS Licence Number 100019340 2007



F:\Projects\11104901_Gtr_Norwich_GL_Strat\GIS\Projects\september_revs\11104901_04_12_gsd_A4.mxd

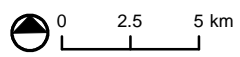
Figure 4.12
Biodiversity Assessment:
Grassland Habitats



The Green Infrastructure information shown on this map is indicative only. It illustrates information about opportunities at a strategic level, and does not indicate a constraint on development.

KEY

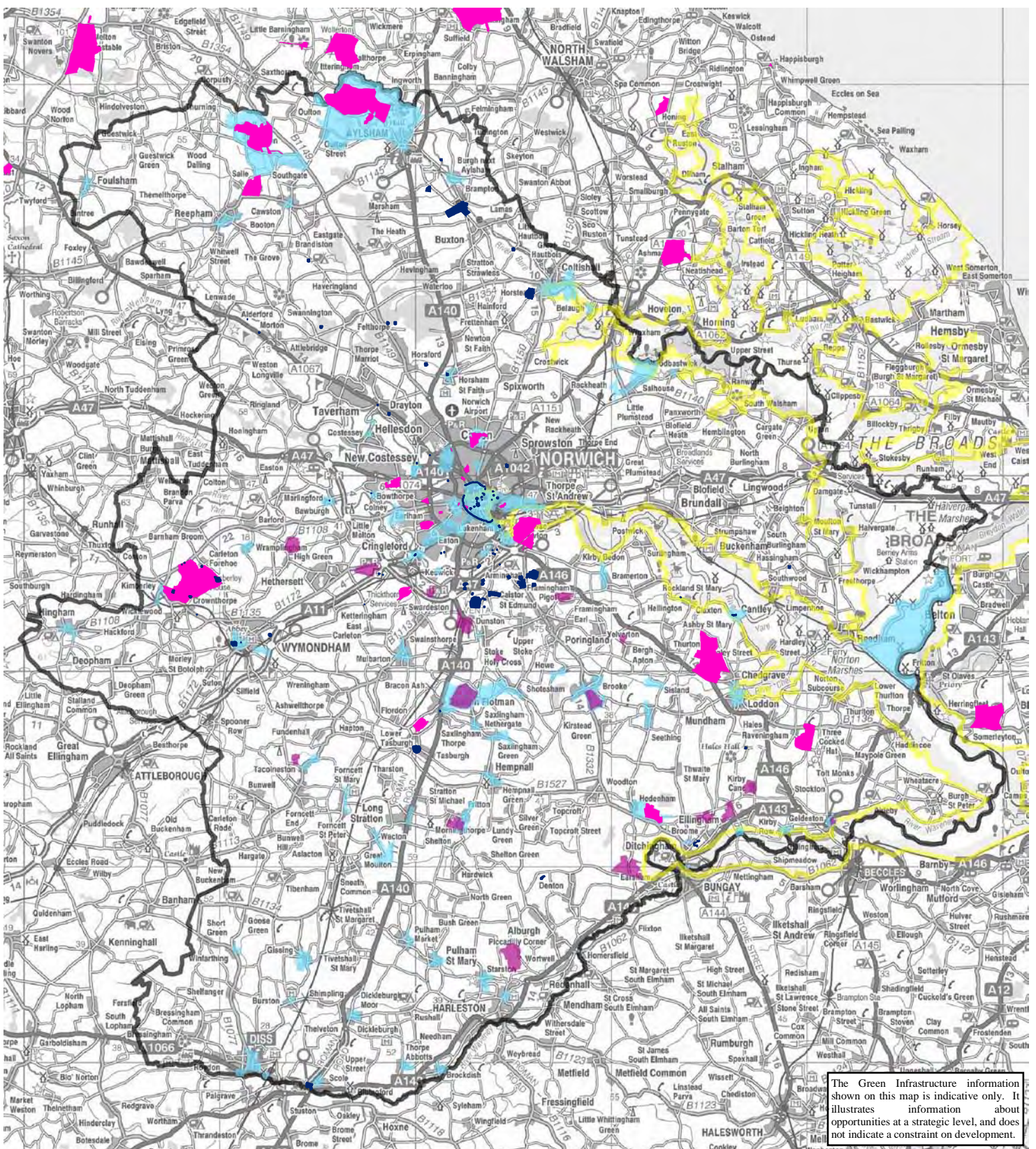
- Existing Lowland Heathland
- Opportunities for Heathland Habitat Enhancement and Creation
- Opportunities for Wood Pasture and Heathland Habitat Enhancement and Creation
- Heathland Corridors
- Broads Authority Area
- Study Area



This map is based on Ordnance Survey material with the permission of Ordnance Survey on behalf of the Controller of Her Majesty's Stationery Office © Crown copyright. Unauthorised reproduction infringes Crown copyright and may lead to prosecution or civil proceedings. OS Licence Number 100019340 2007

F:\Projects\11104901_Gtr_Norwich_GL_Strat\GIS\Projects\september_revs\11104901_04_13_heathld_A4.mxd

Figure 4.13
Biodiversity Assessment:
Heathland Habitats

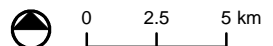


The Green Infrastructure information shown on this map is indicative only. It illustrates information about opportunities at a strategic level, and does not indicate a constraint on development.

KEY

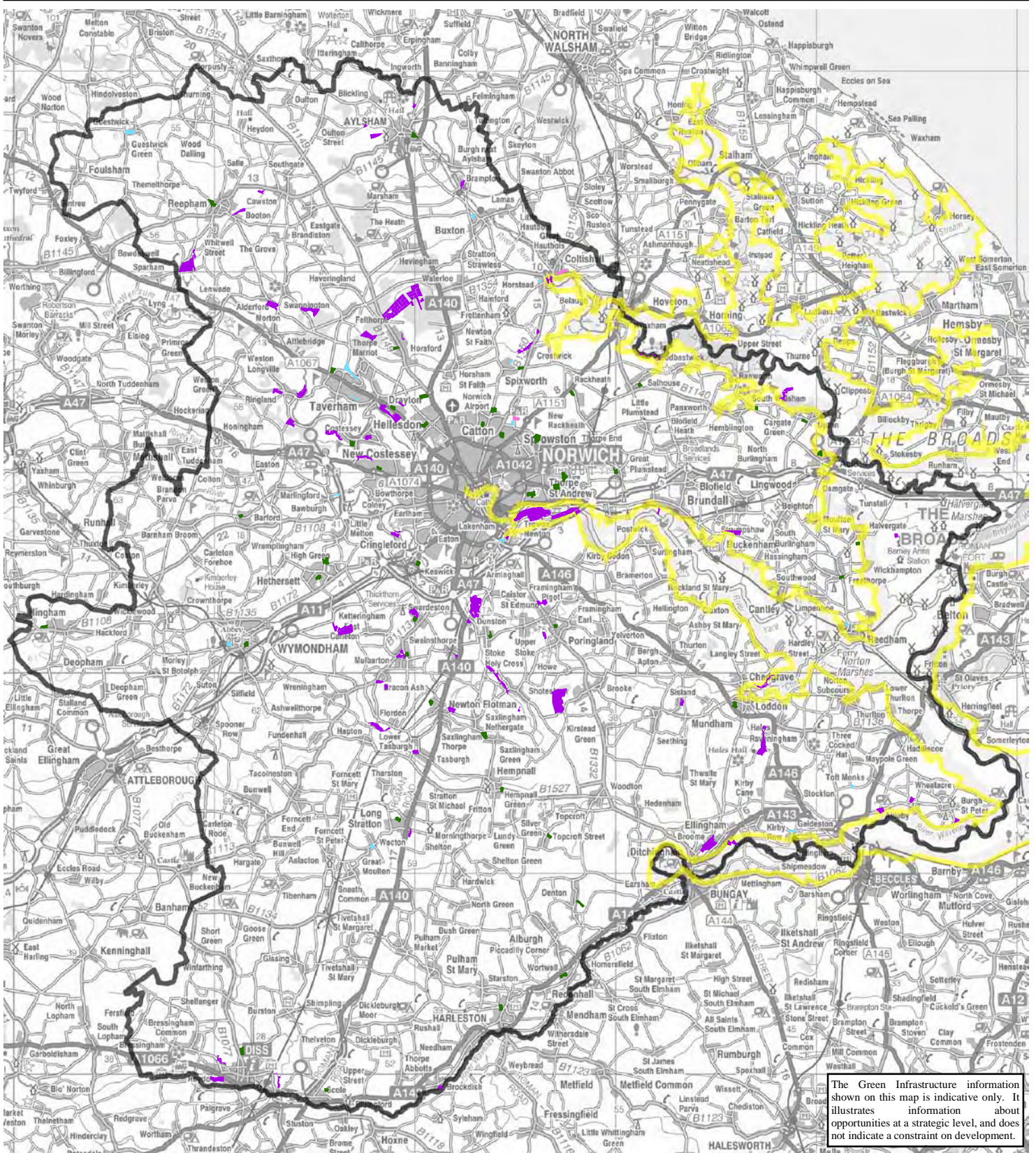
- Conservation Areas
- Registered Historic Parks and Gardens (National Interest)
- Other Historic Parks and Gardens (Local Interest)
- Scheduled Monuments
- Broads Authority Area
- Study Area

This map is based on Ordnance Survey material with the permission of Ordnance Survey on behalf of Her Majesty's Stationery Office © Crown copyright. Unauthorised reproduction infringes Crown copyright and may lead to prosecution or civil proceedings. OS Licence Number 100019340 2007



F:\Projects\11104901_Gr_Norwich_GI_Strat\GIS\Projects\september_rev1\11104901_04_14_heritage_A4.mxd

Figure 4.14
Cultural Heritage

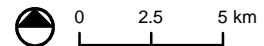


KEY

- Strategic Open Space >2ha*
- Natural and Semi-Natural Greenspace
- Formal Open Space
- Amenity Greenspace
- Allotments
- Study Area
- Broads Authority

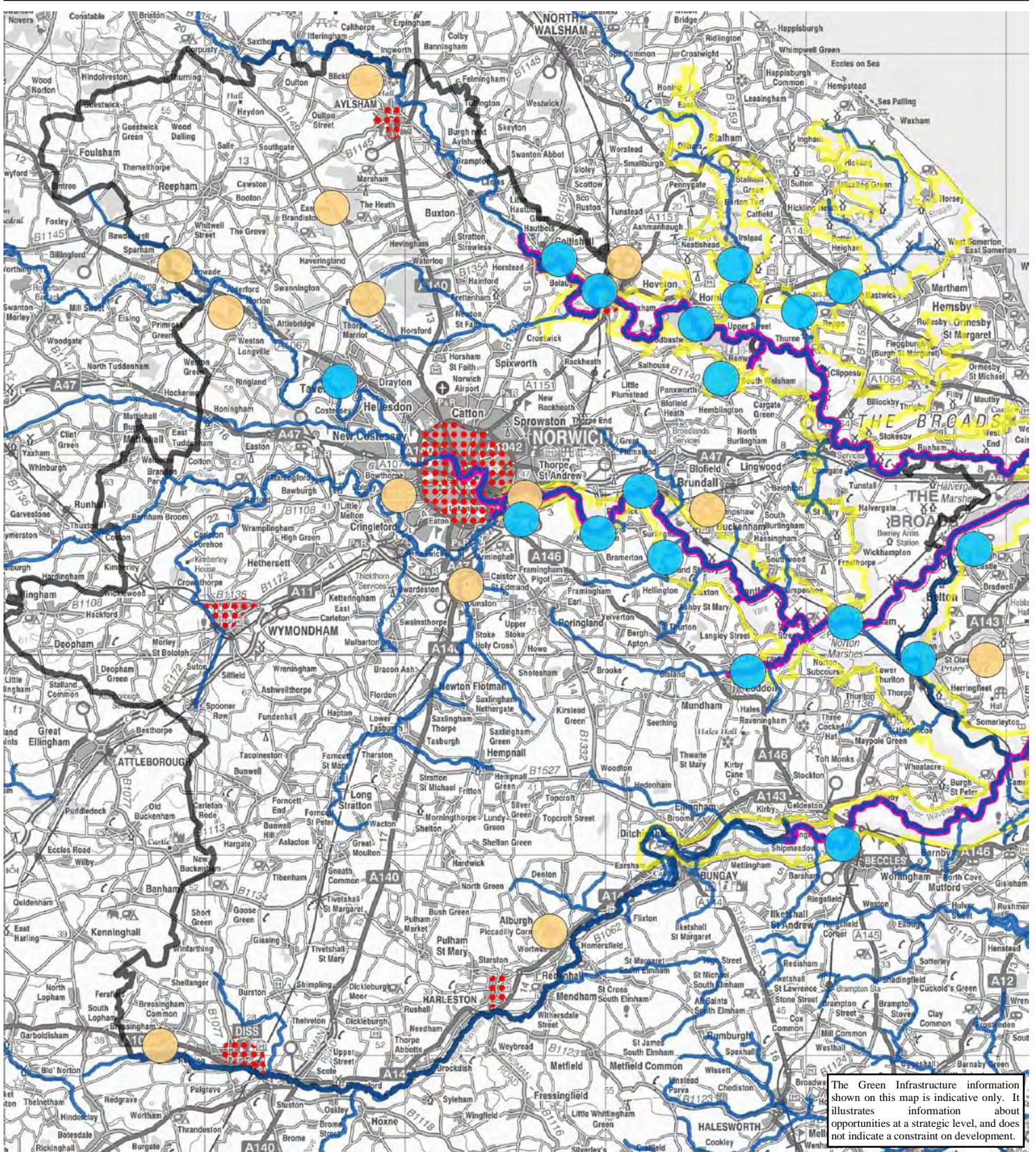
* Excludes Norwich City

This map is based on Ordnance Survey material with the permission of Ordnance Survey on behalf of the Controller of Her Majesty's Stationery Office © Crown copyright. Unauthorised reproduction infringes Crown copyright and may lead to prosecution or civil proceedings. OS Licence Number 100019340 2007





F:\Projects\11104901_Gir_Norwich_GL_Strat\GIS\Projects\september_revs\11104901_04_15_sos_A4.mxd



Figure 4.15
Strategic Open Space



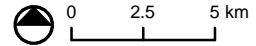
KEY

-  Other Rivers and Tributaries
-  Primary Waterways with Navigation
-  Key Countryside Destination

-  Key Water Focused Destination
-  Key Urban Destination

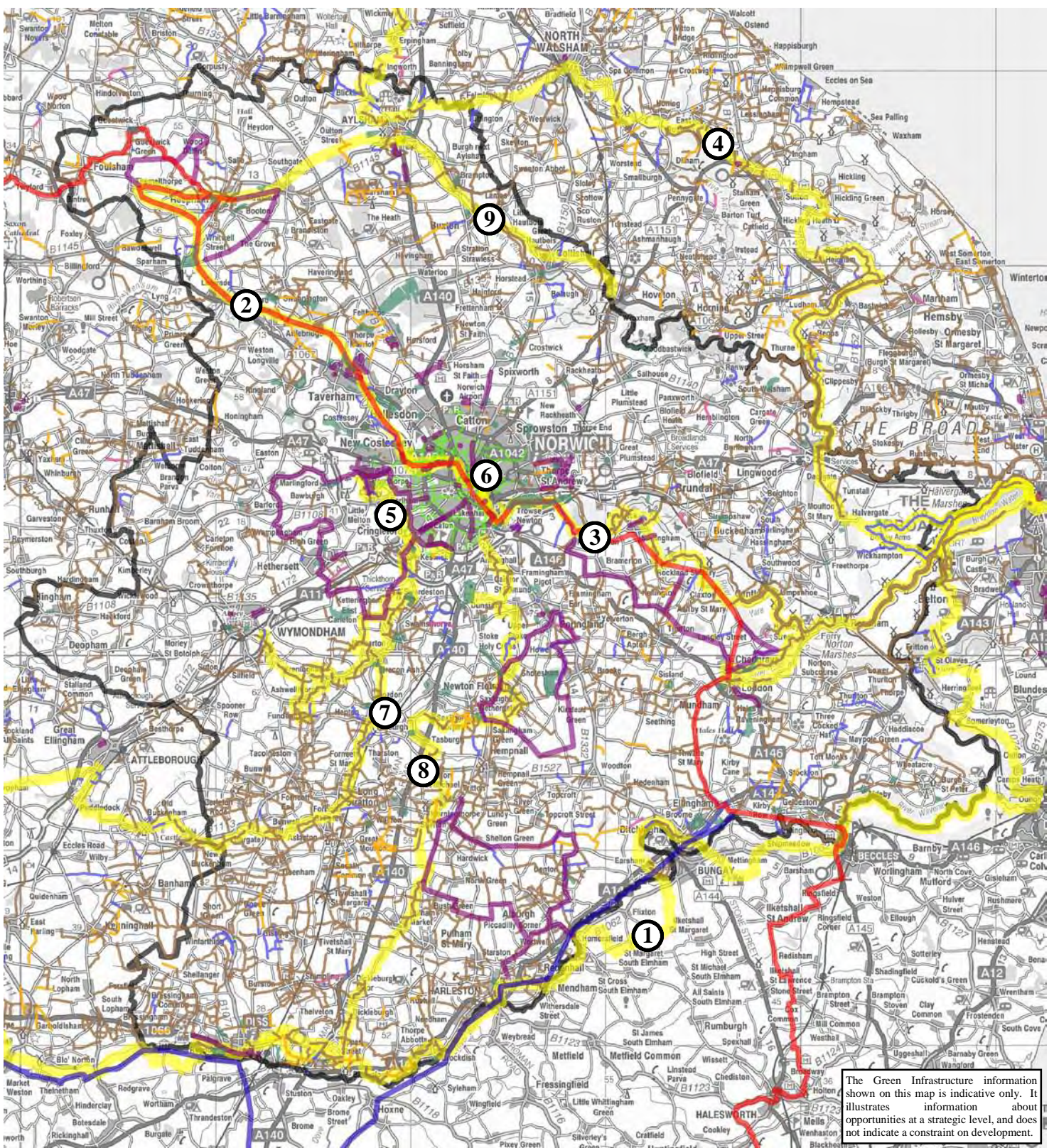
-  Broads Authority Area
-  Study Area

This map is based on Ordnance Survey material with the permission of Ordnance Survey on behalf of the Controller of Her Majesty's Stationery Office © Crown copyright. Unauthorised reproduction infringes Crown copyright and may lead to prosecution or civil proceedings. OS Licence Number 100019340 2007



F:\Projects\11104901_Gir_Norwich_GI_Strat\GIS\Projects\september_revs\11104901_04_16_leisure_GS_A4.mxd

Figure 4.16
Leisure, Recreation
and Tourism Destinations



The Green Infrastructure information shown on this map is indicative only. It illustrates information about opportunities at a strategic level, and does not indicate a constraint on development.

KEY

Rights of Way

- Footpath
- Bridleway
- Rural Byway
- Byway Open to All Traffic
- Norwich City Greenlinks

Promoted Routes

- ① - Angles Way
- ② - Marriotts Way
- ③ - Wherrymans Way
- ④ - Weavers Way
- ⑤ - Yare Valley Walk
- ⑥ - Riverside Walk

- ⑦ - Upper Tas Valley Walk
- ⑧ - Boudica's Way
- ⑨ - Bure Valley Walk and Cycleway

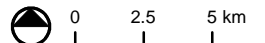
Cycle Routes

- Sustrans National Cycle Route
- Sustrans Regional Cycle Route
- Local Authority Cycle Route

- Strategic Open Space

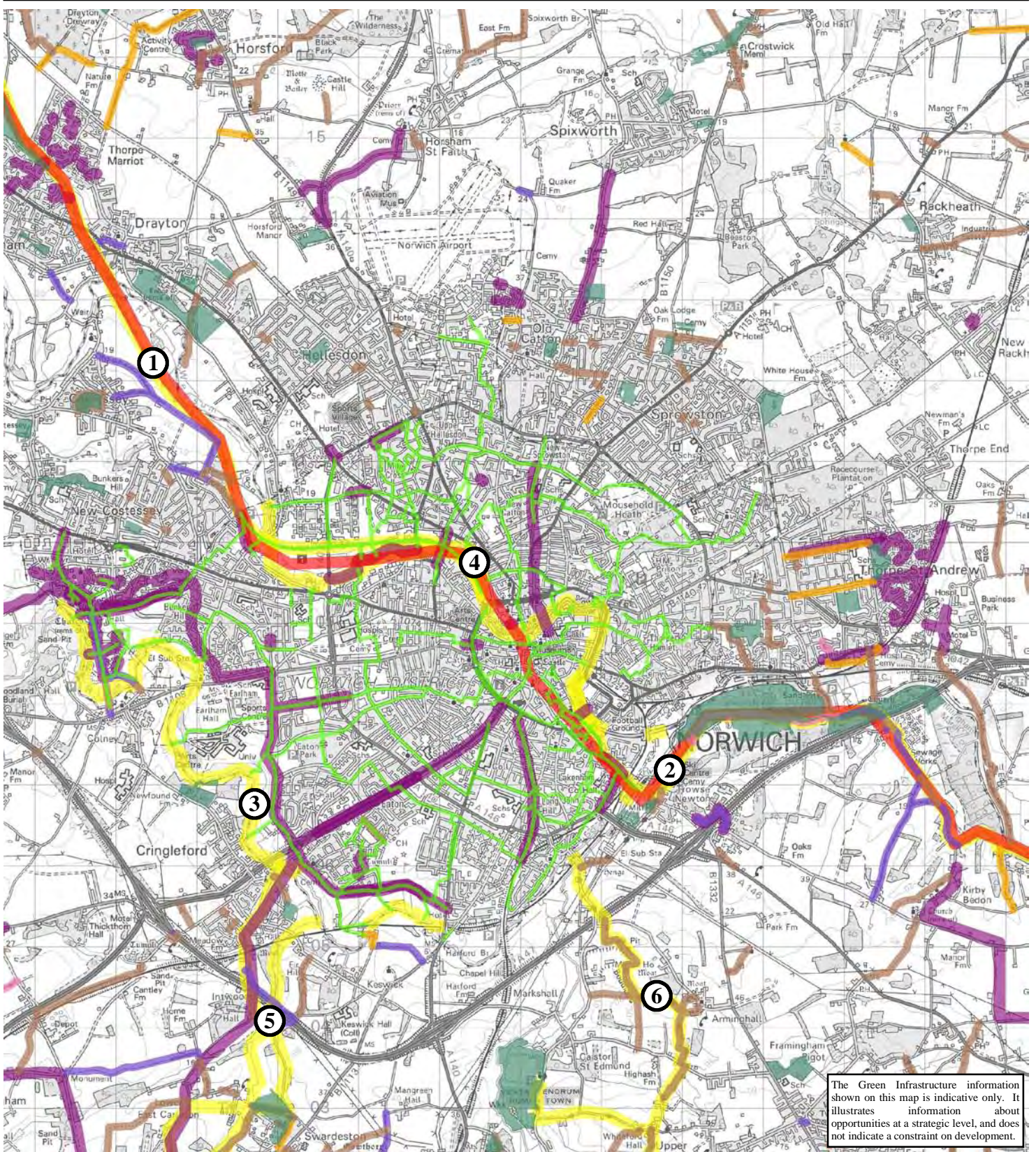
- Study Area

This map is based on Ordnance Survey material with the permission of Ordnance Survey on behalf of the Controller of Her Majesty's Stationery Office © Crown copyright. Unauthorised reproduction infringes Crown copyright and may lead to prosecution or civil proceedings. OS Licence Number 100019340 2007



F:\Projects\11104901_Gir_Norwich_GI_Strat\GIS\Projects\september_revs\11104901_04_17_access_mvmt_beta.mxd

Figure 4.17
Access and Movement:
Greater Norwich Area



The Green Infrastructure information shown on this map is indicative only. It illustrates information about opportunities at a strategic level, and does not indicate a constraint on development.

KEY

Rights of Way

- Footpath
- Bridleway
- Rural Byway
- Byway Open to All Traffic
- Norwich City Greenlinks

Promoted Routes

- ① - Marriotts Way
- ② - Wherrymans Way
- ③ - Yare Valley Walk
- ④ - Riverside Walk
- ⑤ - Upper Tas Valley Walk

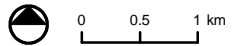
- ⑥ - Boudica's Way

Cycle Routes

- Sustrans National Cycle Route
- Local Authority Cycle Route

■ Strategic Open Space

This map is based on Ordnance Survey material with the permission of Ordnance Survey on behalf of the Controller of Her Majesty's Stationery Office © Crown copyright. Unauthorised reproduction infringes Crown copyright and may lead to prosecution or civil proceedings. OS Licence Number 100019340 2007



F:\Projects\11104901_Gir_Norwich_GI_Strat\GIS\Projects\september_revs\11104901_04_18_access_mvmt_2.mxd

Figure 4.18
Access and Movement:
Norwich Urban Area