




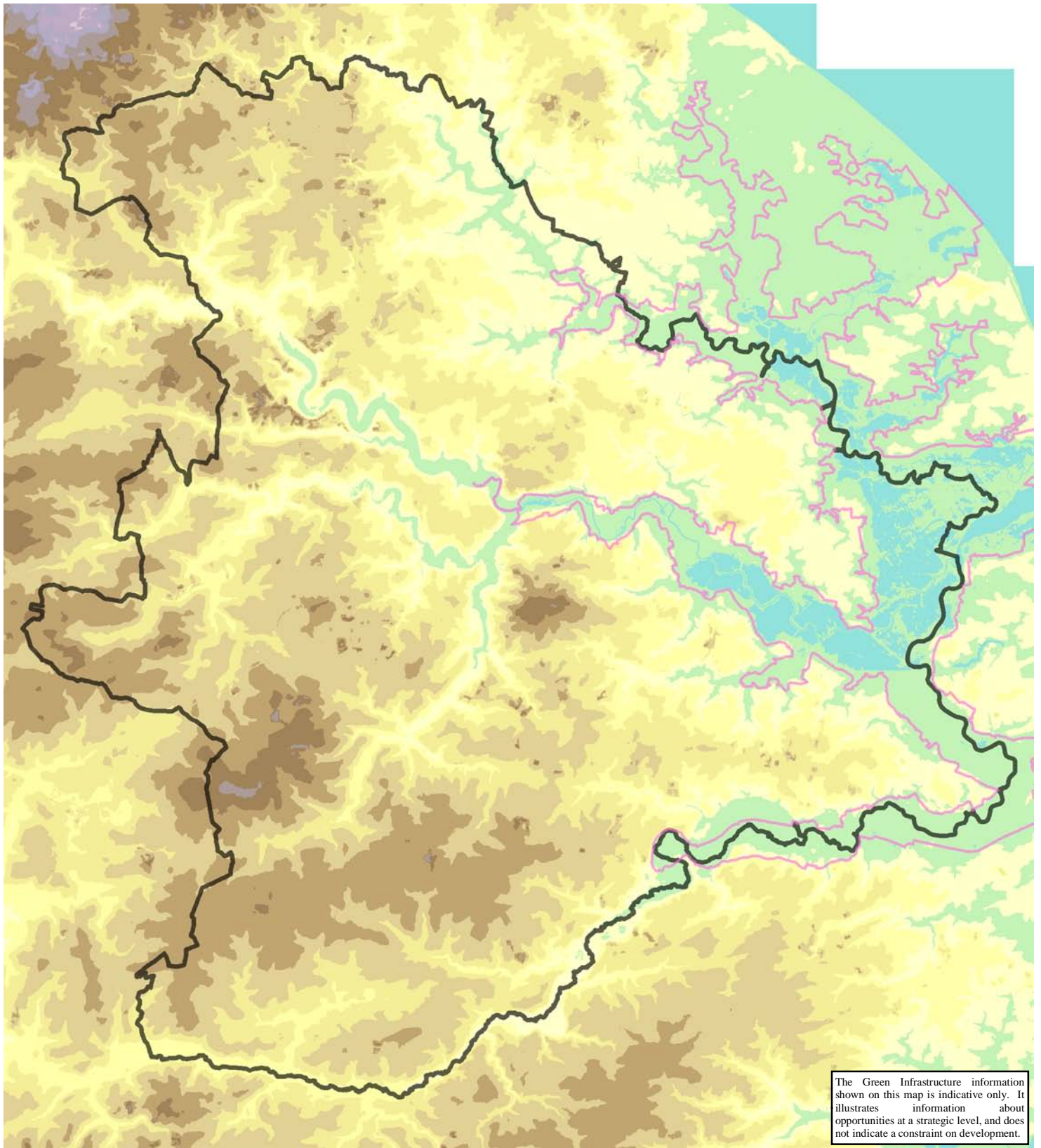


**KEY**

-  Principal Movement Corridor
-  Principal Access Route
-  Indicative Alignment of Proposed Northern Distributor Road
-  Key Vehicular Node
-  Gateway with Potential for Enhancement

The Green Infrastructure information shown on this map is indicative only. It illustrates information about opportunities at a strategic level, and does not indicate a constraint on development.

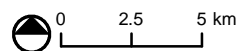




**KEY**

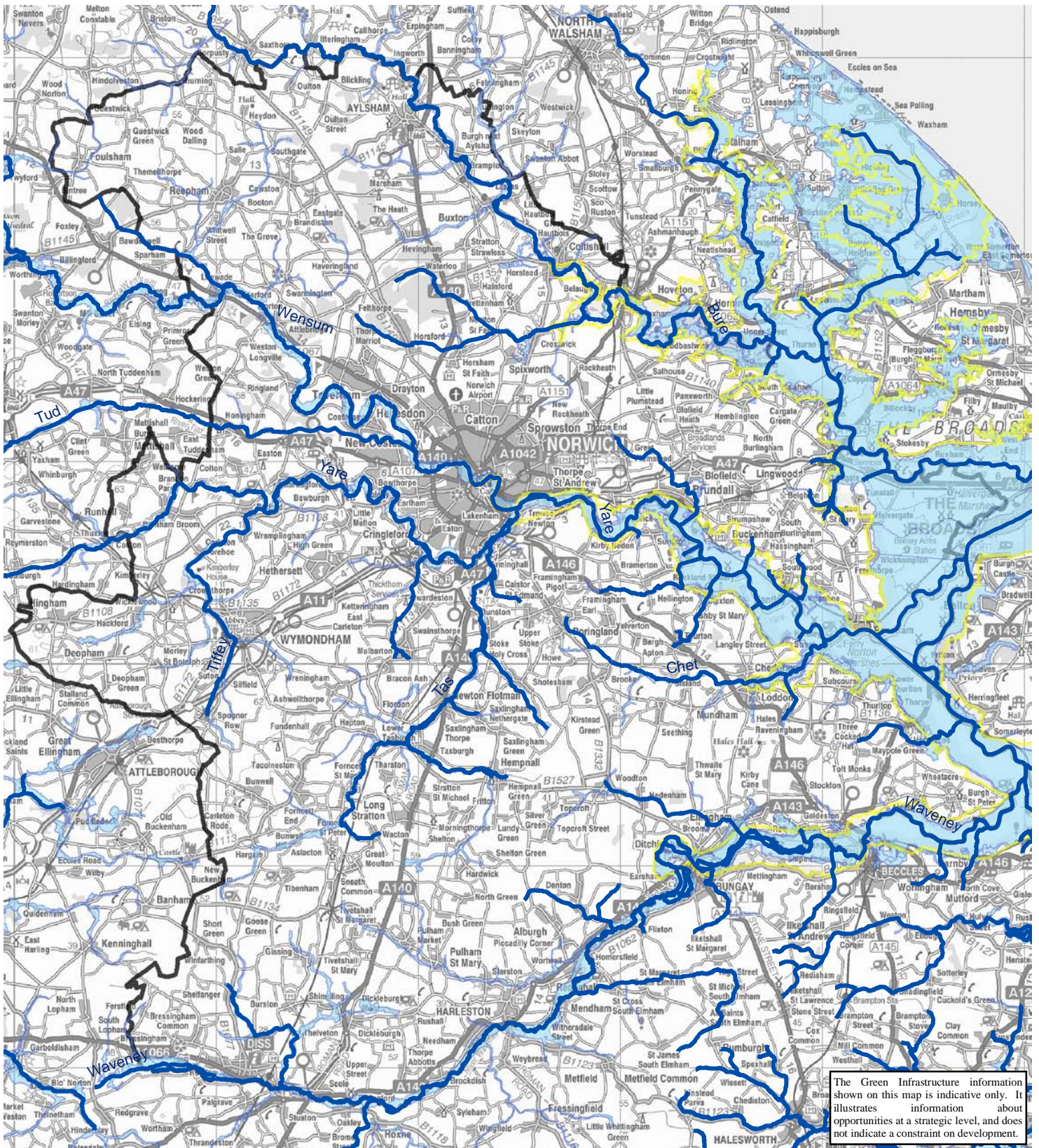
<b>Elevation (m)</b>	20 - 30	60 - 70	100 - 110	Broads Authority Area
-6 - 0	30 - 40	70 - 80	110 - 120	Study Area
0 - 10	40 - 50	80 - 90		
10 - 20	50 - 60	90 - 100		

This map is based on Ordnance Survey material with the permission of Ordnance Survey on behalf of the Controller of Her Majesty's Stationery Office © Crown copyright. Unauthorised reproduction infringes Crown copyright and may lead to prosecution or civil proceedings. OS Licence Number 100019340 2007



F:\Projects\11104901\_Gtr\_Norwich\_GI\_Strat\GIS\Projects\september\_revs\11104901\_04\_07\_topo\_A4.mxd

**Figure 4.7**  
Landform

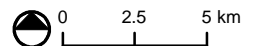


The Green Infrastructure information shown on this map is indicative only. It illustrates information about opportunities at a strategic level, and does not indicate a constraint on development.

**KEY**

- Main River Courses
- Broads Authority Area
- Flood Zone
- Study Area

This map is based on Ordnance Survey material with the permission of Ordnance Survey on behalf of the Controller of Her Majesty's Stationery Office © Crown copyright. Unauthorised reproduction infringes Crown copyright and may lead to prosecution or civil proceedings. OS Licence Number 100019340 2007



F:\Projects\11104901\_Gir\_Norwich\_GL\_Strat\GIS\Projects\september\_revs\11104901\_04\_08\_hydrology\_A4.mxd