



# Greater Norwich Green Infrastructure Strategy

---

## Baseline Report Summary



# Green Infrastructure

*Geography in Government Award 2022 Excellence in Geo-visualisation winner*

## Green Infrastructure Standards

Describe:

- what good green infrastructure 'looks like' for local planners, developers, parks and greenspace managers and communities, and
- how to plan it strategically to deliver multiple benefits for people and nature.

The five Headline Green Infrastructure Standards are:

1. Green Infrastructure Strategy
2. Accessible Greenspace
3. Urban Nature Recovery
4. Urban Greening Factor
5. Urban Tree Canopy Cover

# Greater Norwich: Land Use



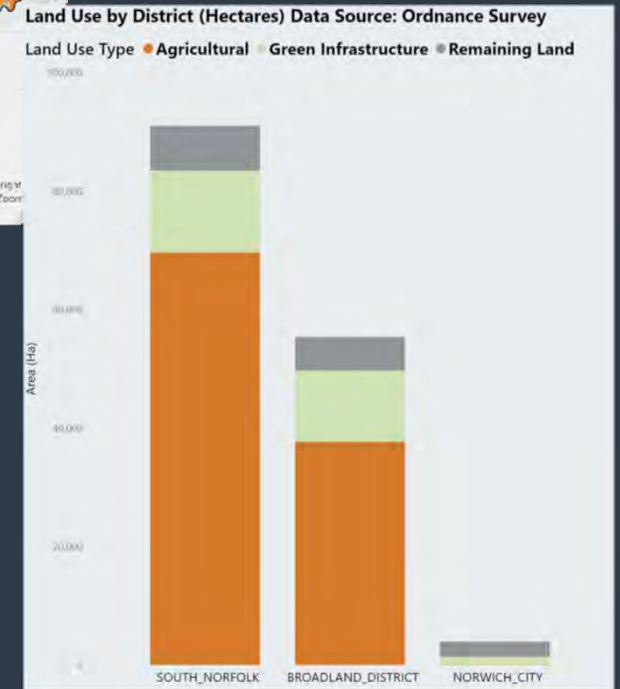
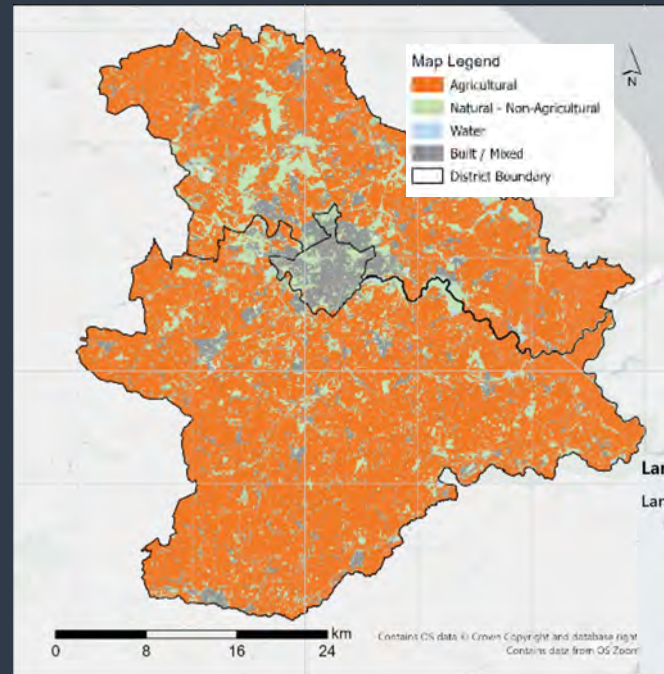
Agricultural Land



Green Infrastructure:  
Non-agricultural Natural or Semi-natural land



Remaining Land:  
Hard surfaces, Buildings, Houses and Private gardens



# Green Spaces



**Active Places:** Green spaces interact with residents and visitors and provide recreational opportunities, supporting people’s mental and physical health and encouraging active travel



**Natural Places:** Green spaces interact with the natural environment and provide many ecosystem services, such as water quality, carbon storage, biodiversity benefits, flood defence, etc



Health and wellbeing



Physical Activity



Social cohesion



Water quality



Carbon storage



Biodiversity



Flood defence

# Greater Norwich: High Quality Greenspace (Natural Assets)



**International Designated Sites**  
(SPA, SAC, Ramsar)

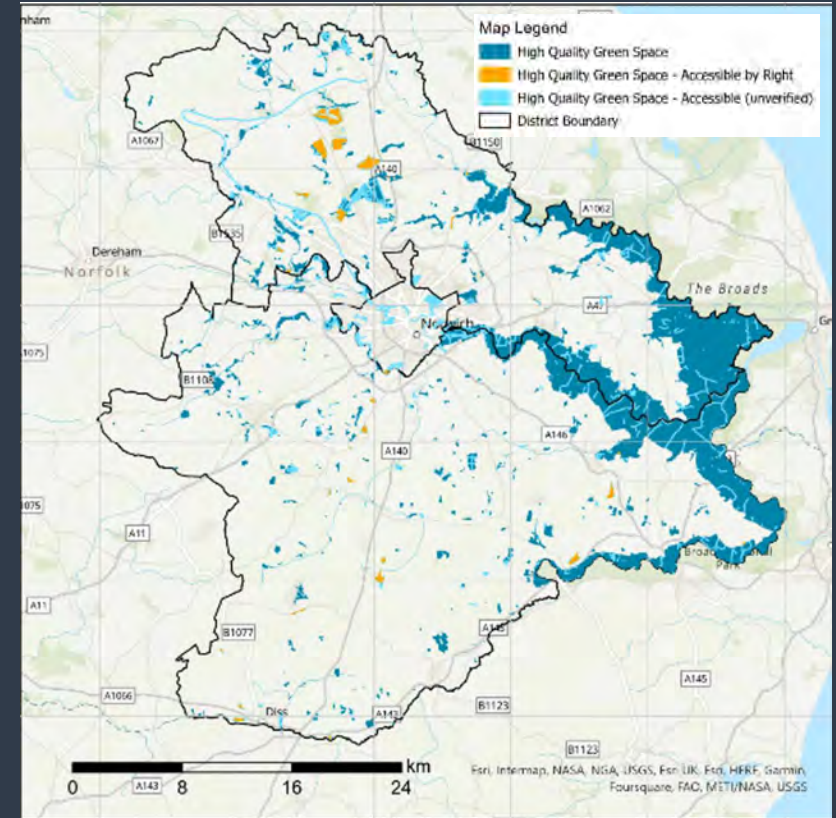


**National Designated Sites**  
(SSSI, NNR, LNR)

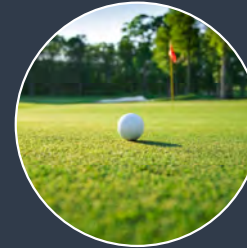
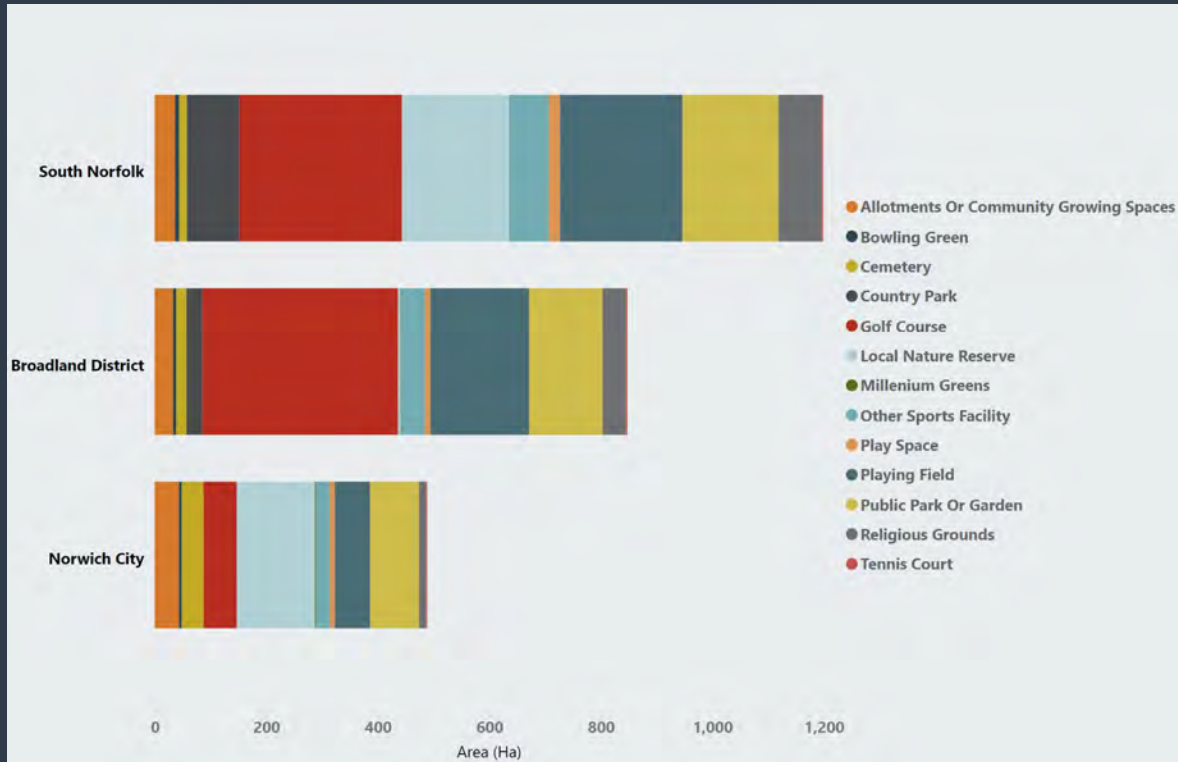


**Local Designated Sites**  
(CWS)

District	Total area of all other Green Infrastructure (ha) (excludes agricultural land)	High Quality Green Space Area (ha)	Percent of total GI area that is High Quality
Broadland	11,980	10,580	88.3%
Norwich	1,330	350	26.5%
South Norfolk	13,810	9,230	66.9%
<b>Greater Norwich</b>	<b>27,120</b>	<b>20,160</b>	<b>73.9%</b>



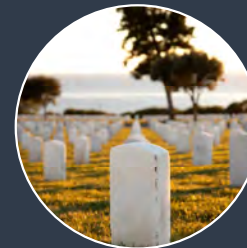
# Greater Norwich: Green Space Types



Golf courses represent **2.58%** of Greater Norwich GI



Public parks and gardens, play spaces and playing fields represent **3.27%** of Greater Norwich GI



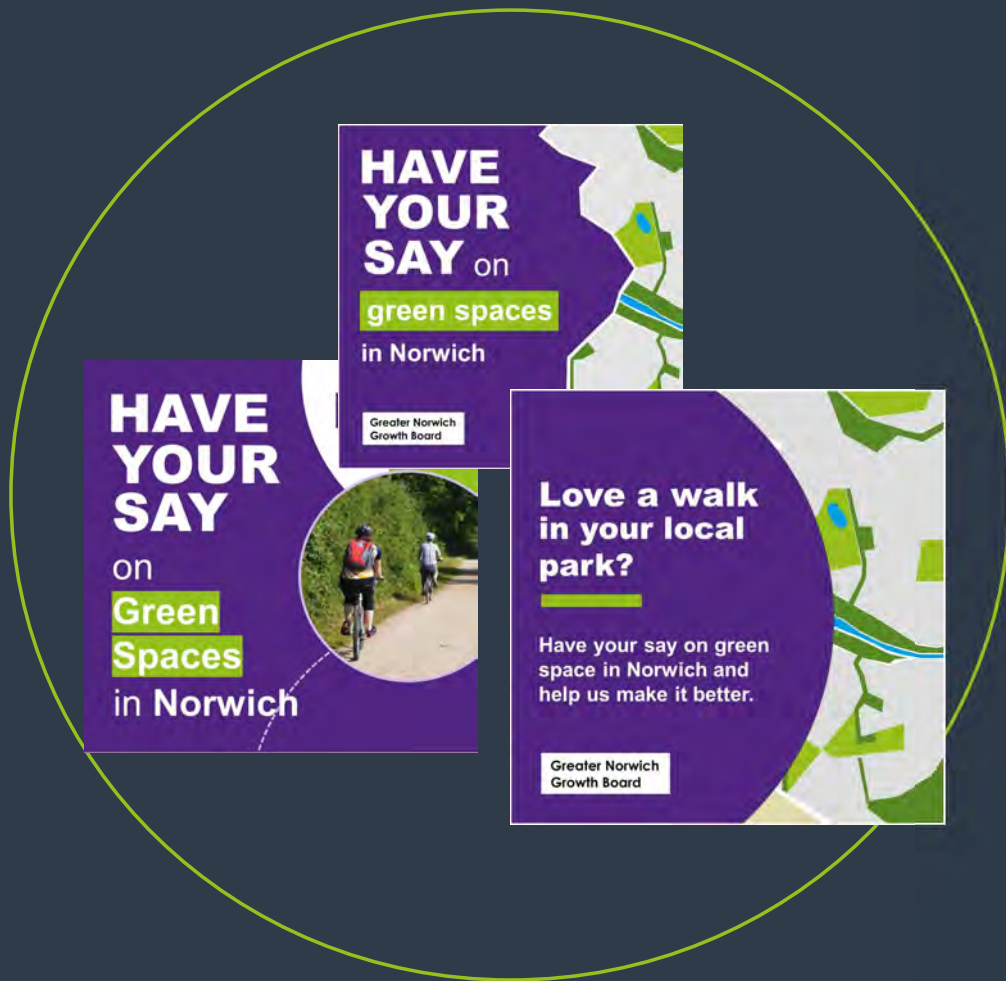
Cemeteries, churchyards and religious grounds represent **0.74%** of Greater Norwich GI



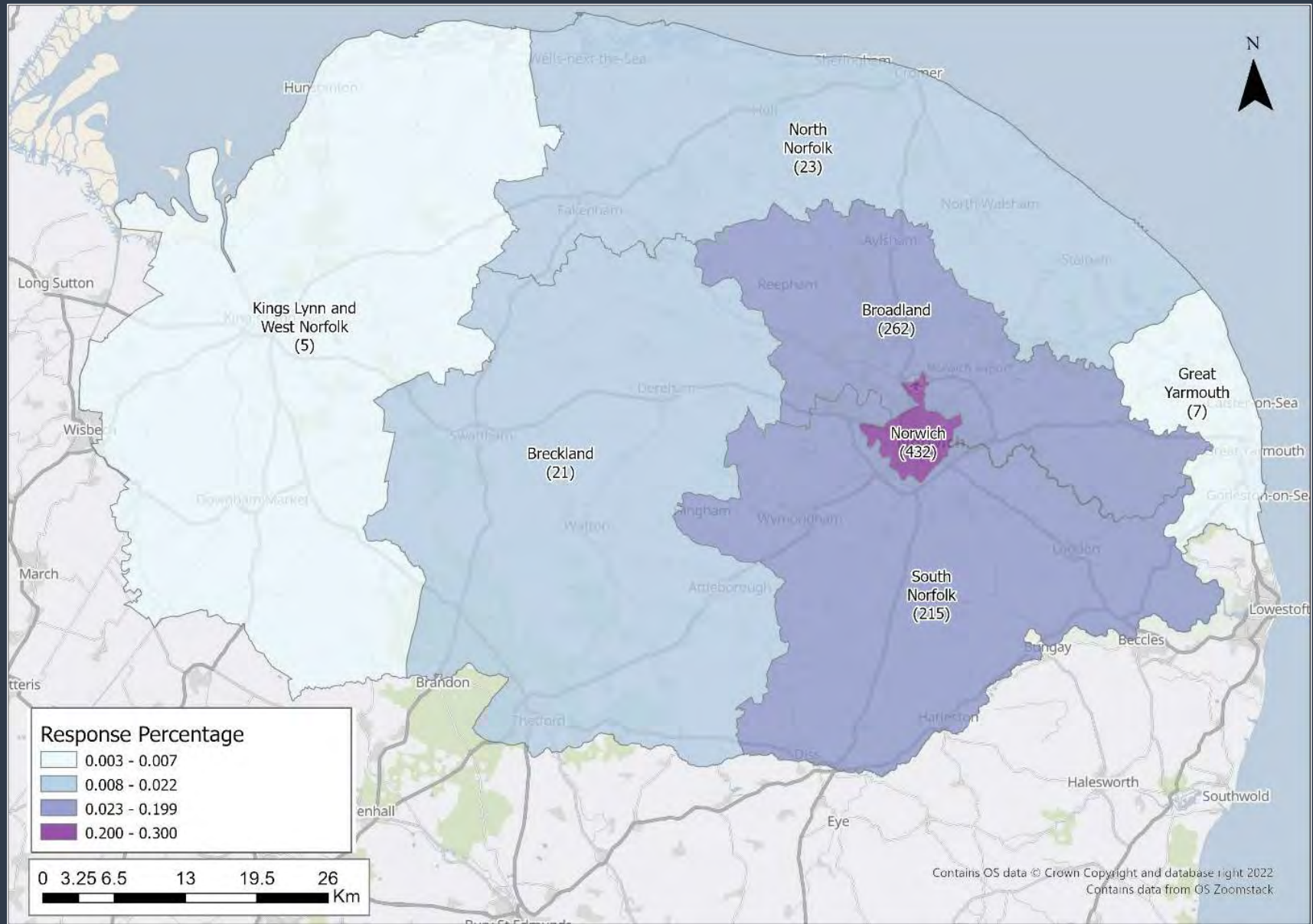
# Greater Norwich Green Infrastructure Strategy

---

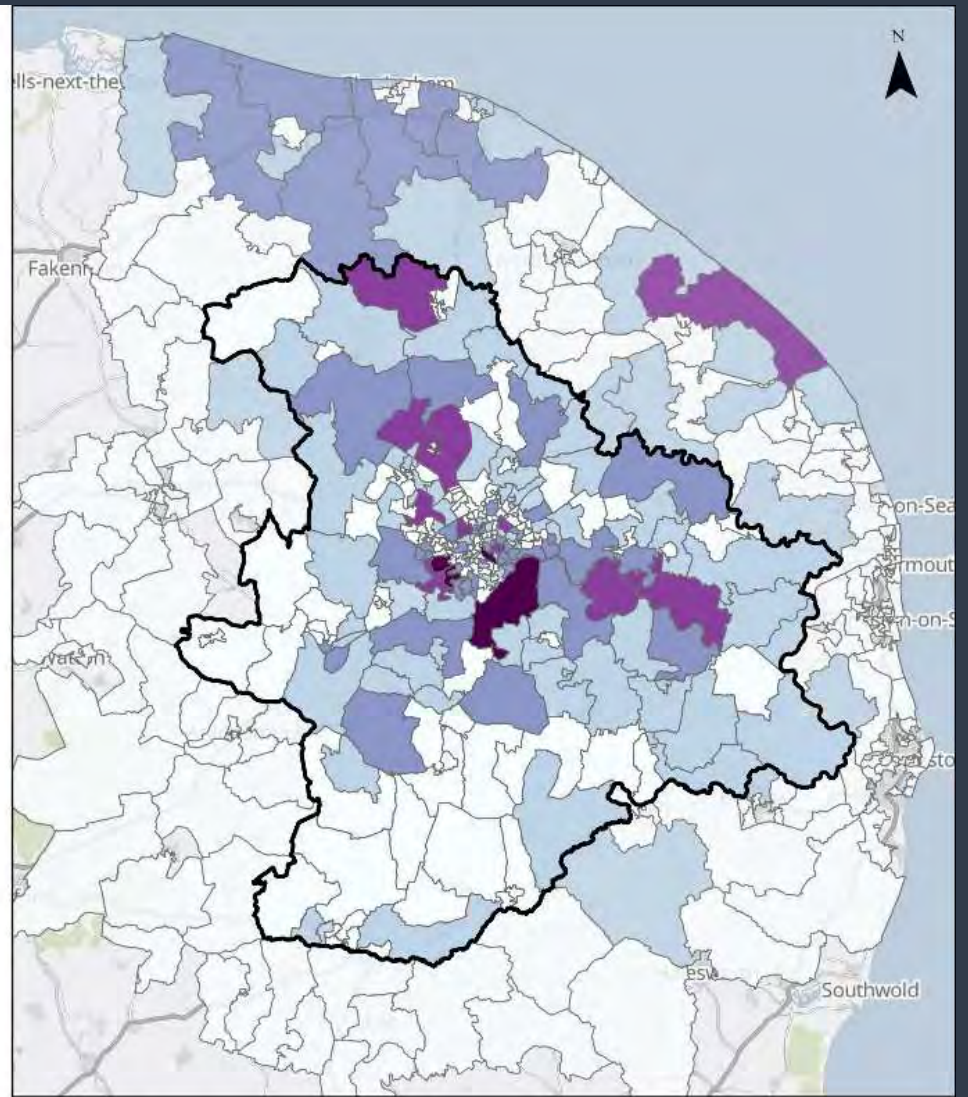
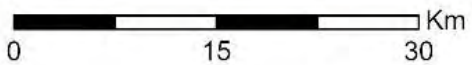
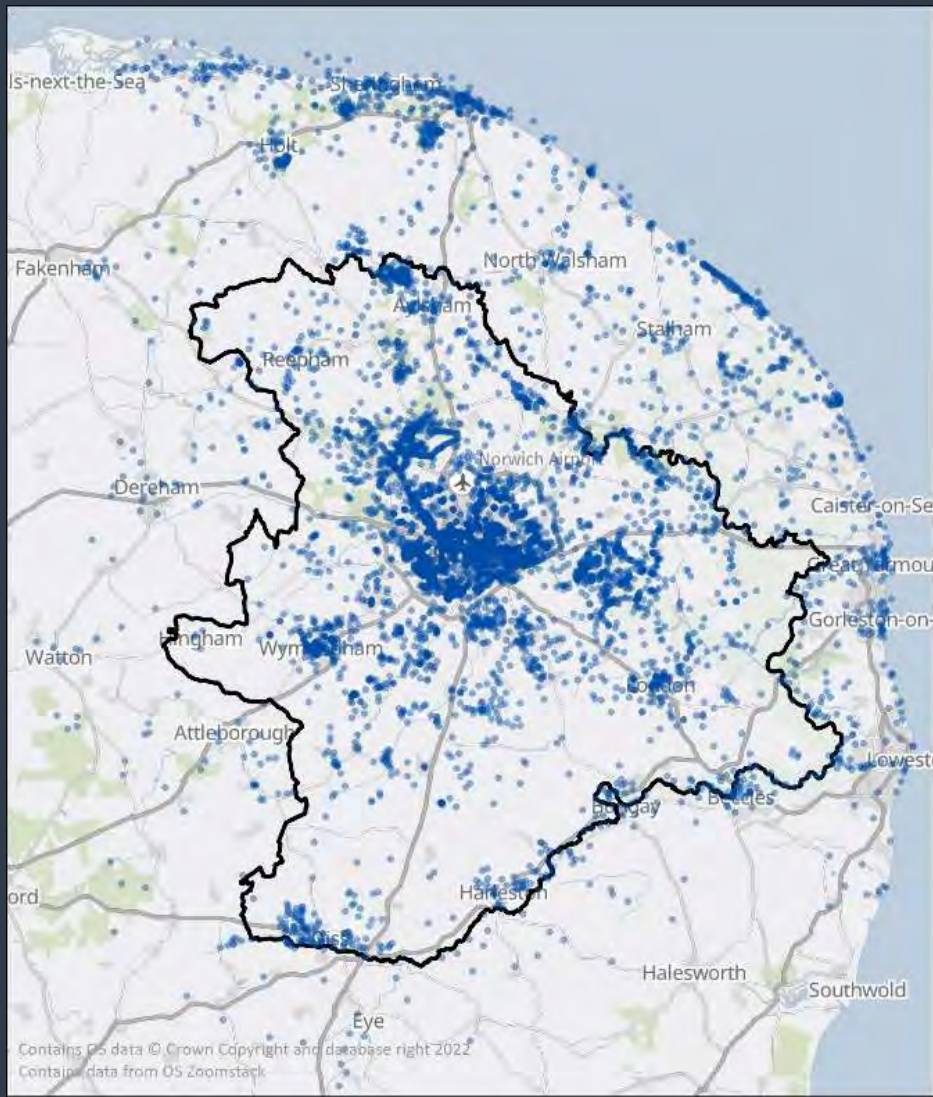
Public Survey Results  
10<sup>th</sup> May – 21<sup>st</sup> June 2023







Region	Count	Response Percentage Range
North Norfolk	23	0.003 - 0.007
Kings Lynn and West Norfolk	5	0.003 - 0.007
Breckland	21	0.008 - 0.022
Broadland	262	0.023 - 0.199
Norwich	432	0.200 - 0.300
South Norfolk	215	0.023 - 0.199
Great Yarmouth	7	0.003 - 0.007





# Greater Norwich Green Infrastructure Strategy

---

## Next Steps:

- Further Analysis of Survey Responses
  - Demographic/Stakeholder Gaps
  - Spatial analysis
  - Sentiment analysis
- Further engagement to address gaps
- Summary of Evidence and Opportunities Report
- Strategy Development



# Greater Norwich Green Infrastructure Strategy

---

Mapping Demonstration:

- Accessible Greenspace Analysis
- Broadland Country Park