

Greater Norwich Annual Growth Programme 2023/24

March 2023



Introduction

1. The Greater Norwich Growth Board (GNGB) is a partnership that is unlike any other in the UK. Norwich City, South Norfolk District, Broadland District and Norfolk County Councils together with the New Anglia Local Enterprise Partnership form the GNGB. They have chosen to work together to accelerate the delivery of infrastructure within the joint Greater Norwich area, because they recognise the benefits that can be achieved by looking beyond their individual administrative boundaries.
2. To support the delivery of infrastructure, the partners pool their income received from the Community Infrastructure Levy (CIL) into one Infrastructure Investment Fund (IIF).
3. Since their establishment in 2014, the GNGB has allocated over £30m of IIF funding and £50m of CIL supported borrowing which has levered in at least an additional £240m to deliver infrastructure projects within the Greater Norwich area.
4. Each year the GNGB has responsibility for assembling a new list of projects which are allocated funding from the IIF. These projects are known as the Annual Growth Programme (AGP).

Approval

5. The projects forming the AGP are drawn from the **Joint Five Year Infrastructure Investment Plan** (5YIIP- Appendix B). This Plan aligns the new AGP against the existing IIF financial commitments and forecasted CIL income until 2027/28. It forms the evidence base which supports the partner authorities' decision-making to make new allocations from the IIF on an annual basis.
6. On 15 December 2022 the GNGB recommended the approval of the draft 5YIIP 2023-28.
7. The 5YIIP was then agreed at the individual district cabinet meetings on the below dates:

Monday 13 February 2023- South Norfolk District Council
Tuesday 21 March 2023- Broadland District Council
Wednesday 8 February 2023 - Norwich City Council
8. The AGP will also be reported to Norfolk County Council as the GNGB's accountable body and the New Anglia LEP as partner.



Delivery and Monitoring

9. The projects included in the AGP will be added to the Greater Norwich Growth Programme. To date, just under 100 projects have been accepted into the programme and allocated funding from the IIF.
10. Monitoring the delivery of the Greater Norwich Growth Programme is the responsibility of the Greater Norwich Infrastructure Delivery Board (IDB). Project promoters provide quarterly highlight reports to the IDB and they consider any in year changes.
11. The IDB report progress on programme delivery (and exception reports if required) to the GNGB.

Annual Growth Programme 2023/24

12. In accordance with the agreed processes for the IIF, the IDB met on 14 October 2022 to agree which projects are to be put forward as the 2023/24 AGP. Nine new projects totalling £10,632,243 have been identified to be supported by the IIF and are listed below. Project summaries have been included in **Appendix A**.
13. **Figure 1 - Annual Growth Programme Project 2023/24** shows the distribution of the new AGP projects across Greater Norwich.

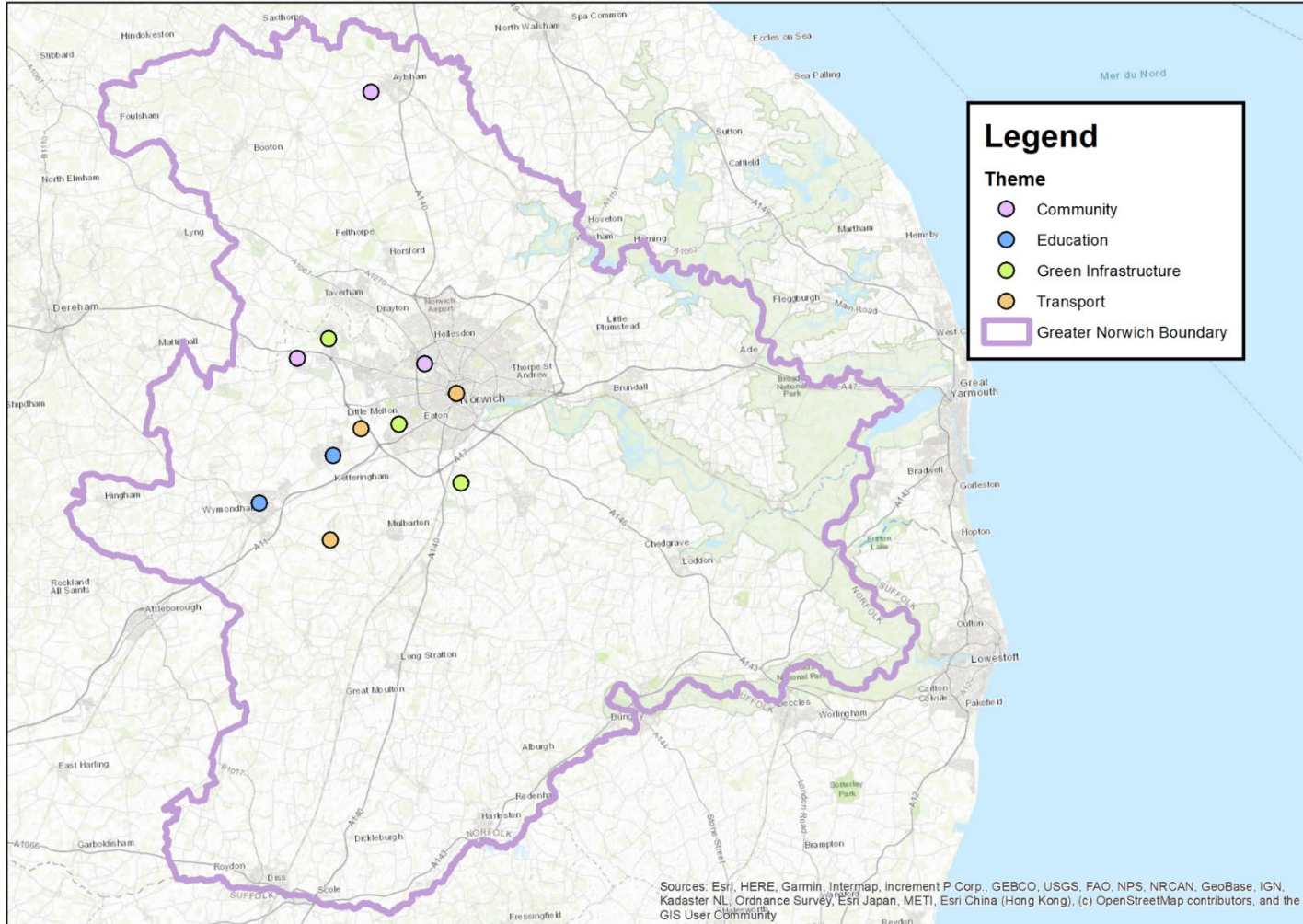
Table 1 - Annual Growth Programme Projects 2023/2024

Project Name	Applicant	Amount of CIL requested	Total project size
Youngs Park, Aylsham – 3G AGP	Broadland	£ 250,000	£ 900,000
Hethersett to NRP Cycle Route	County	£ 501,015	£ 728,015
Venta Icenorum	South Norfolk	£ 153,128	£ 155,628
Queens Hills Community Park	South Norfolk	£ 133,552	£ 153,552

Project Name	Applicant	Amount of CIL requested	Total project size
Cringleford Country Park	South Norfolk	£ 468,000	£ 798,000
Easton Village Hall	South Norfolk	£ 505,000	£ 1,505,204
Sloughbottom Park Regeneration	Norwich	£ 850,000	£ 8,512,025
Guildhall & Exchange Street Regeneration	Norwich	£ 2,771,548	£ 5,894,000
Hethel Technology Park	South Norfolk	£ 5,000,000	£ 8,218,900
Total	N/A	£ 10,632,243	£ 26,865,324

14. In addition, Education will receive £2.5million to support the delivery of their capital programme within Greater Norwich.
15. **£4m** is allocated to the IIF reserves as Match Funding. This is for major projects that require match to lever in additional, more substantial amounts of funding from central government.
16. Approximately **£2m** from the IIF is committed to projects that that have a delivery programme spanning multiple years, some of which were agreed in previous AGPs.

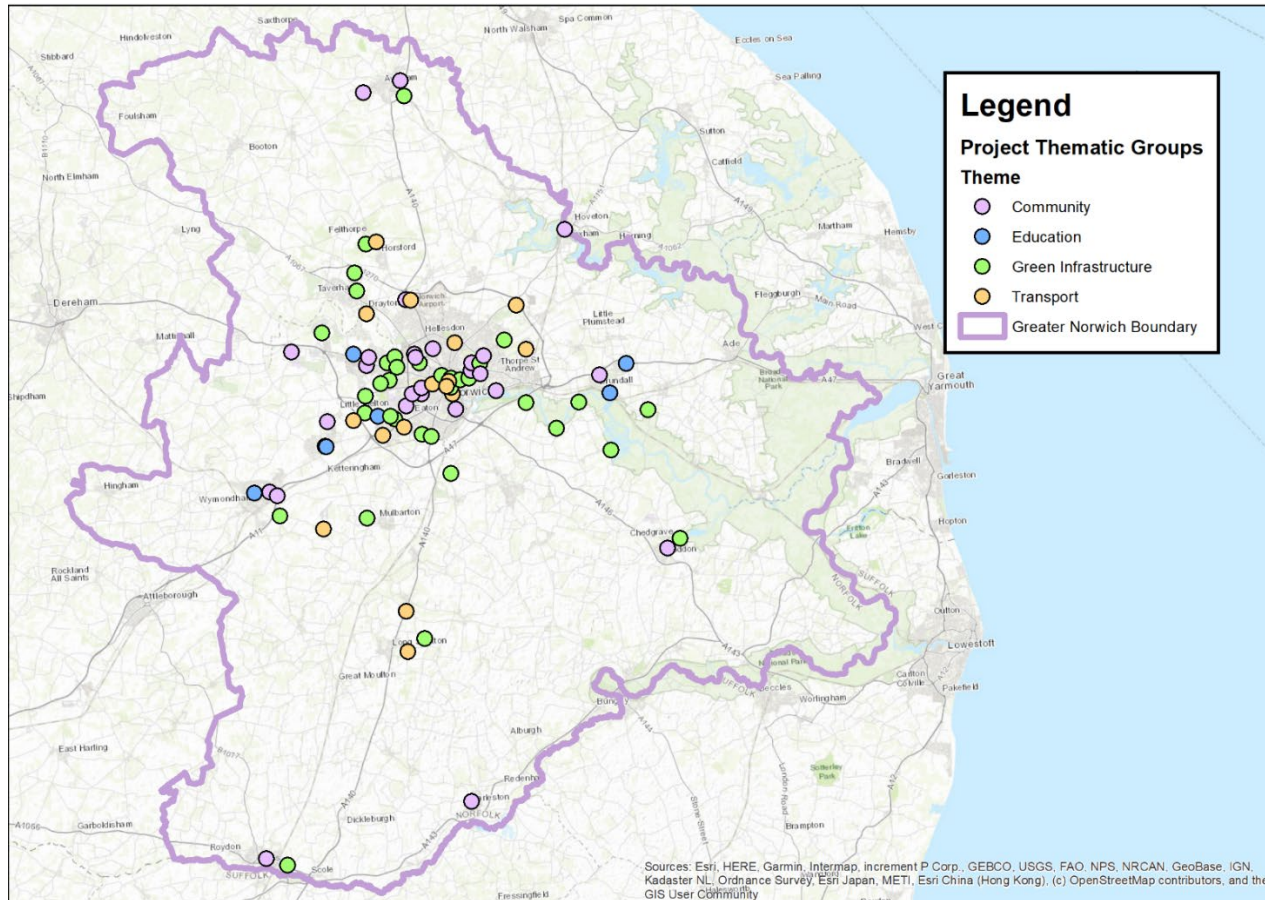
Figure 1 - Map of the 2023-24 Annual Growth Programme



The Full Greater Norwich Growth Programme

17. The GNGB have committed funding to projects through the acceptance of an Annual Growth Programme each year since the establishment of the IIF in 2014. **Figure 2 - Full Greater Norwich Growth Programme** below shows the distribution of all previously funded projects across the Greater Norwich area. The individual project summaries are listed as Appendix A.

Figure 2 - Map of the full Greater Norwich Annual Growth Programme



Completed Projects

18. The following projects from the Greater Norwich Growth Programme completed delivery in 2022/23.

Project Name	Project Lead	CIL Contribution	Total project size
GP52 – Thorpe Marriot Greenway	Broadland District Council	£ 121,000	£ 121,000
GP30 – Marriotts Way: Sloughbottom Park/Andersons Meadow	Norfolk County Council	£ 342,504	£ 342,504
GP49 – Earlham Millennium Green Phase 3	Norwich City Council	£ 25,000	£ 25,000
GP72 – Recreation Road Pool	Norwich City Council	£ 60,000	£ 60,000
GP73 – Norwich Parks Tennis	Norwich City Council	£ 103,453	£ 423,000
GP79 – FDC Bowthorpe	Norwich City Council	£ 250,000	£ 929,000
GP17b - (Cromer Rd/Aylsham Rd) A140 Corridor	Norfolk County Council	£ 87,000	£ 416,000
GP67 – Ketts Country Long Distance Trail	Norfolk County Council	£ 97,630	£ 97,630

Figure 3 - Full Greater Norwich Growth Programme

Appendix A

Greater Norwich Growth Programme Project Summaries

Below is the complete list of projects included within the Greater Norwich Growth Programme.

Details regarding finance and current delivery are included within the joint Five-year Infrastructure Investment Plan 2023-28 (Appendix B)

2014/15 Annual Growth Programme

Ref	Project Description	Delivery Status
GP01	Harrisons' Wood, Salhouse Road, Norwich This project provides public access improvements to improve connections from Mousehold Heath to the Broads. It contributes to an eventual continuous green corridor extending to the Broads and beyond.	Ongoing
GP02	Danby Wood This project provided biodiversity and access improvements including thinning parts of the wood, upgrading the main footpath through the wood, and renovating old hedgerows.	Complete
GP03	Marsden Marsh This project forms part of the Yare Valley path. It improved pedestrian access to the western part of the site, thereby minimising damage and improving the site's resilience whilst also improving the site's biodiversity value.	Complete
GP04	Earlham Millennium Green (EMG) (Phase 1) This project is part of a programme to improve Earlham Millenium Green creating a pedestrian link from Bowthorpe to the UEA and NRP. This phase involved the creation of high quality open space and wildlife area, improvements to access and enhanced potential for educational use.	Complete
GP05	Riverside Way - Oasis site This project revised the layout and design of The Oasis, a small pocket park adjacent to Fye Bridge on the River Wensum. Partnership work with stakeholders was undertaken to enhance the site to maximize its use, linkages, and potential for access to the river.	Complete

Ref	Project Description	Delivery Status
GP06	<p>Marriott's Way (Phase 1)</p> <p>This project made improvements to the city end of Marriott's Way, between Pendelsham Rise and Drayton High Road. The path was resurfaced, and lighting improvements were made to encourage commuting by bicycle and on-foot</p>	Complete
GP07	<p>Norwich Health Walks</p> <p>This project developed a footpath through the tree belt surrounding the N&N University Hospital. Offering an opportunity for staff and patients of the hospital to enjoy fresh air and exercise thus aiding a sense of well-being for patients and staff alike.</p>	Complete

2015/16 Annual Growth Programme

Ref	Project Description	Status
GP08	<p>Earlham Millennium Green Path Improvements (Phase 2)</p> <p>This project is part of a programme to improve Earlham Millenium Green creating a pedestrian link from Bowthorpe to the UEA and NRP. Improvements included the upgrading of a gravel path with a hard surface path suitable for pedestrians and cyclist.</p>	Complete
GP09	<p>Marriott's Way (Phase 2)</p> <p>A second phase of improvement to the section of Marriott's Way from Thorpe Marriott to Norwich City Centre in addition to those agreed in the 2014/15 Growth Programme. Including repairs to Dragon Bridge to enable adoption, highway improvements to access points and barriers, signage and lighting.</p>	Ongoing

Ref	Project Description	Status
GP 10-17	<p>Norwich Area Transportation Strategy (now known as Transport For Norwich)</p> <p>Initially 8 projects (GP10-17) were identified from Transport for Norwich's programme of works. The programme aimed to improve accessibility by all forms of transport in and around the city, encouraging the use of more sustainable forms of transport, such as public transport, cycling and walking, while also improving the capacity of the road network, in particular through the Broadland Northway.</p> <p>The programme was delivered by a partnership between Norfolk County Council and Norwich City Council, as well as local authorities within Greater Norwich on schemes in the wider area. Funding sources included the Department for Transport, developer contributions, the New Anglia Local Enterprise Partnership and local growth funds.</p> <p>IIF was made available to these schemes to use as a top up to fill the programme funding gaps. Some of the initial 8 projects were able to secure alternative funding so the Infrastructure Development Board were able to agree amendments to the projects which received IIF. The projects that were delivered:</p>	Complete
GP11	<p>St Clements Toucan Crossing</p> <p>This project developed a crossing point at Denton Road/ Chartwell Road/ School Road, in order to enable cyclists and pedestrians to cross much more quickly and directly providing separate cycling and pedestrian crossing areas.</p>	Complete
GP13	<p>Eaton Interchange</p> <p>This project involved works at the crossroads in Eaton to improve safety and traffic flow. These include reducing traffic calming measures, widening the cycle track, resurfacing the carriageway, a new cycle traffic signal and simplifying pedestrian crossings.</p>	Complete
GP13b	<p>Roundhouse Way</p> <p>This project created a new bus interchange at Roundhouse Way, Cringleford</p>	Complete
GP16	<p>Golden Ball Street</p> <p>This project was part of the programme of measures that reduced traffic flow through the city centre and provided a safer and more attractive environment for pedestrians and cyclists.</p>	Complete

Ref	Project Description	Status
GP17b	<p data-bbox="219 140 734 172">(Cromer Rd/Aylsham Rd) A140 Corridor</p> <p data-bbox="219 180 1951 379">The primary objective of this project was to implement on-carriageway bus priority measures through the reallocation of road space on the A140 Cromer Road north of Norwich city centre. This work enabled the benefits of the Broadland Northway to be realised by improving bus journey reliability and bus service performance as well as having a positive impact on bus patronage. The project involved the provision of an inbound bus lane between Fifers Lane and Waterloo Road along the Cromer Road/Aylsham Road corridor. The inbound bus lane is also shared with cyclists</p>	Complete

2016/17 Annual Growth Programme

Ref	Project Description	Status
GP19	<p>St Faiths Rd to Airport Transport Link Establishment of road and cycle links between St Faiths Rd and Airport Industrial Estate (AIE) to join the existing employment area with the North East Growth Triangle.</p> <p>-</p> <p><i>Initial scheme feasibility ruled out the immediate possibility of a direct link between Hurricane Way and St Faiths Road. The project stalled and was not able to be delivered in the short term. The project was withdrawn from the programme but was invited to reapply once a deliverable option is identified.</i></p>	Closed prematurely
GP22	<p>Heathgate - Pink Pedalway This project was one of 22 schemes designed to deliver the creation of an eight mile 'pedalway' across the whole city that could be ridden confidently and safely by everyone.</p>	Complete
GP23	<p>Carrow to Deal Ground riverside walk Delivery of a short section of cycle/ footway on north bank of the River Wensum providing a key 'missing link' in the route between Norwich city centre/ rail station and Whitlingham Country Park.</p> <p>-</p> <p><i>The project intended to open up access to the Deal Ground and Utilities sites by delivering a cycle and pedestrian route to the city centre. However, delivery of these sites stalled in 2018 with no clear indication of when they will come forward. The rationale for delivery of this section of route therefore no longer existed. The £260,000 match funding for the project (originally from Sustrans) was redeployed elsewhere. The project was withdrawn from the programme but was invited to reapply once a deliverable option is identified.</i></p>	Closed prematurely
GP24	<p>Colney River Crossing (also known as NRP to Threescore)</p> <p>This project created a new footbridge across the River Yare, and made improvements to existing rights of way and footpaths. These works improved linkages between housing in Bowthorpe and the major employment locations at NRP and the Hospital.</p>	Complete

Ref	Project Description	Status
GP25	Northern Distributor Road (now known as the Broadland Northway) This project delivered a 12.4-mile dual carriageway linking the A47 from the southeast of Norwich to the airport and north of the District. It was supported by the GNGB with £40m of reduced cost borrowing. It was named the Broadland Northway when completed.	Complete
GP26	Long Stratton Bypass This project will deliver a new bypass on the A140, passing to the west of Long Stratton.	Ongoing
GP26B	Hempnall Crossroads This project made improvements to road safety at this busy junction where traffic crosses the a140 near Hempnall, by installing a roundabout.	Complete

2017/18 Annual Growth Programme

Ref	Project Description	Status
GP27	Lizard and Silfield Nature Reserves To protect and enhance the Lizard and Silfield Nature Reserve by the creation of alternative green infrastructure routes for recreational access. The project will identify and agree new routes, which will be developed as appropriate. Necessary infrastructure such as stiles, fencing, signage/way marking, hedgerow planting/restoration and interpretation/localised publicity will be provided to encourage and manage use of the network. - <i>Discussions with landowners failed to reach agreement to commit the footpaths as public right of way. IIF funding cannot be allocated to private land so the project was withdrawn from the programme.</i>	closed prematurely
GP29	Barn Road Gateway This project made improvements to the entrance of the Marriott's Way Cycleway with signage, paving and the removal of vegetation, increasing the visibility of it and encouraging more use.	Complete
GP30	Marriott's Way: Sloughbottom Park - Andersons Meadow This project provides improvements to a section of the route to increase safety, comfort and personal security. Works include path widening/realigning, street lighting, vegetation management, tree planting, and drainage improvements.	Complete
GP31	Riverside Walk accessibility improvements This project will deliver a package of accessibility improvements to the Riverside Walk, to enable its use by all.	Ongoing

Ref	Project Description	Status
GP33	<p>Strumpshaw Pit Circular Walk</p> <p>This project will expand the dog walking capabilities of Strumpshaw Pit, through additional parking, cycle rack provision and access improvements. Offsetting the impact caused to other protected sites</p>	Ongoing
GP36	<p>Castle Gardens</p> <p>This project will involve restoration and improvement works to Castle gardens to promote the use of the gardens as a park and public amenity space.</p>	Ongoing
GP37	<p>Long Stratton Sports Hub (Closed Prematurely)</p> <p>This project brings together several facility-providing partners (South Norfolk Council, Long Stratton High School and Long Stratton Parish Council) to improve the sport and leisure facility stock in the village in anticipation of significant housing growth. It created a new sport and leisure 'Hub' across three adjacent sites and providing new and enhanced facilities that are fit for purpose and better suited to the current and future facility needs of residents.</p> <p>-</p> <p><i>Alternative funding was sourced to deliver the improvements to the leisure centre which are now complete. The majority of the IIF funding was earmarked to the swimming pool within the Long Stratton High School site. Following extensive discussions between South Norfolk Council and Enrich Learning Trust, a decision was made not to progress with the refurbishment and re-opening of the swimming pool because the costs associated with renovating, re-opening and then operating the swimming pool were deemed to be too prohibitive. This project closed prior to all funds being drawn down.</i></p>	closed prematurely
GP38	<p>Football pitch improvements</p> <p>This project includes improvements to drainage and grass species and improved goal facilities through the provision of new posts, nets and additional ground sockets at four Norwich sites: Eaton Park, Sloughbottom Park, Britannia Barracks and Fountain Ground</p>	Ongoing
GP39	<p>Hales cricket and bowls clubhouse improvements (Closed Prematurely)</p> <p>This project will deliver a new pavilion to serve Loddon and Hales Cricket Club and Hales Bowls Club, giving both clubs a permanent home in spaces that meet their respective needs, allowing them to develop and grow participation across a range of ages.</p> <p>-</p> <p><i>Site access improvement works were completed in January 2020, however due to escalating costs the club decided to stall progress and completely re-evaluate the project. The project was withdrawn from the programme but was invited to reapply once a deliverable option is identified.</i></p>	closed prematurely

Ref	Project Description	Status
GP40	Kett's Park Sports Hub This project provided a new full-size and floodlit artificial grass pitch, better quality existing natural turf pitches with improved drainage, new tennis pavilion and refurbished community centre.	Complete
GP 41-43	Library self-access improvements Self-access technology allows the library service to automatically control and monitor building access, self-service kiosks, public access computers, lighting, alarms, public announcements and customer safety. Introducing this technology meant that each library could have increased opening hours, making access to the library more convenient for current and new customers without an increase in staff costs. This was a great opportunity for libraries to be accessible and relevant to more people.	Complete
GP41	Wroxham Library: self-access improvements This project delivered public toilets and introduced self-access technology, which allows automatic control and monitoring of building access	Complete
GP42	Plumstead Road Library: self-access improvements This project introduced self-access technology at Plumstead Road Library, and the provision of car and bike customer parking (including disabled parking).	Complete
GP43	Diss library: self-access improvements This project introduced self-access technology, which allows automatic control and monitoring of building access.	Complete
GP44	Education - Hethersett £2m was allocated to support the development of Hethersett Junior School and Hethersett Academy.	Complete

2018/19 Annual Growth Programme

Ref	Project Description	Status
GP45	Green Pedalway – Earlham Road Section This project delivered improvements to the Earlham Road (B1108) junction with Mill Hill Road and Heigham Road, providing facilities for both cyclists and pedestrians, creating safer active travel routes.	Complete
GP46b	Marriott's Way Ramp & Resurfacing (replaces GP46 & GP53) This project made improvements in access points and resurfacing on the Marriotts Way between Thorpe Marriott and Costessey plus the creation of a ramp to the rear of the Tesco supermarket in the Drayton area to reduce the gradient allowing much improved accessibility for all.	Ongoing

Ref	Project Description	Status
GP47	UEA to Eaton Boardwalk This project enhanced the Yare Valley Walk, between UEA and Eaton/Cringleford. The path around Cringleford Meadow was improved by laying gravel, improvements were made to the car park, and ditches were dredged to provide additional locations for fish spawning.	Ongoing
GP48	Wherryman's Way- Yare Valley Cycle Route This project improves the Yare Valley Cycle Route with new signage and route improvements, a route that follows the Wherryman's Way Loddon cycle loop and links into the broader Norwich city cycle network.	Ongoing
GP49	Earlham Millennium Green (EMG) Improvement Project (Phase 3) This project is part of a programme to improve Earlham Millenium Green creating a pedestrian link from Bowthorpe to the UEA and NRP. Involved refurbishing and improving existing entrance features, new signage, replacing pond dipping platforms and a timber footbridge connecting EMG with Earlham Marsh.	Complete
GP50	Yare and Wensum Valley Link This project will make improvements for walkers, cyclists and wildlife. These include the resurfacing of the Gunton Lane Marriott's Way Access, tree planting, traffic calming measures, and the creation of linear green space between West Earlham and Bowthorpe.	Ongoing
GP51	Green Infrastructure: Access for All This project implements a range of smaller scale accessibility improvements across various projects and areas. The funding is spread across 5 years with new 'access improvement' projects being identified each year.	Ongoing
GP52	Thorpe Marriott Greenway This project was designed to promote better greenspace and access in the Thorpe Marriott area, and established a path through the current tree belt that leads to Drayton Dreyway.	Complete
GP55	Community Sports Hub- The Nest, Horsford This project created a community sports hub, providing a range of sports facilities as well as offices, cafe and meeting spaces.	Complete
GP56	Harleston Library- self-access improvement This project introduced self-access technology, which allows automatic control and monitoring of building access.	Complete
GP57	Costessey Library- self-access improvement This project introduced self-access technology, which allows automatic control and monitoring of building access.	Complete
GP58	Loddon Library- self-access improvement This project introduced self-access technology, which allows automatic control and monitoring of building access.	Complete

Ref	Project Description	Status
GP59	Earlham Library- self-access improvement This project introduced self-access technology, which allows automatic control and monitoring of building access.	Complete
GP60	Mile Cross Library- self-access improvement This project introduced self-access technology, which allows automatic control and monitoring of building access.	Complete
GP61	Education- Blofield and Brundall This project: <ul style="list-style-type: none"> seeks to ensure the primary school in Brundall has suitable accommodation for larger cohorts of children. aims to identify and secure a new site to move the existing school at Blofield into larger and more suitable accommodation 	Ongoing

2019/20 Annual Growth Programme

Ref	Project Description	Status
GP62	Education - Cringleford The funding will be allocated to a new two form entry primary school in Cringleford.	Ongoing

2020/21 Annual Growth Programme

Ref	Project Description	Status
GP63	North West Woodlands Project (now known as Broadland Country Park) This project created a new country park facility, which includes a series of walking, cycling and trim trail routes, habitat restoration and enhancement schemes, public engagement events, car parking and visitor facilities.	Complete
GP64	Hellesdon Station Green Infrastructure The project will deliver a range of inter-related green infrastructure improvements in the Hellesdon Station area. These improvements will improve the quality and access to the area boosting the use of the pedestrian and cycle links that run through it.	Ongoing
GP65	East Wymondham Green Infrastructure The project will deliver infrastructure around the Oxford Common site to create an accessible area for local residents to visit for recreational purposes.	Ongoing
GP66	20 Acre Wood Community Access Improvements The project involved the creation of an accessible and waymarked path through 20 Acre Wood from Enfield Road to Earlham Green Lane.	Ongoing

Ref	Project Description	Status
GP67	Kett's Country Long Distance Trail This project created a long-distance walking trail from Wymondham to Norwich via a number of South Norfolk towns and villages.	Complete
GP68	Frenze Beck Green Infrastructure The project will deliver a number of green infrastructure updates and installations on Frenze Beck, on the eastern edge of Diss.	Ongoing
GP69	Aylsham Sports Hub Stage 3 The project will deliver a full-size, floodlit 3G pitch which can be sub-divided into 3 smaller pitches suitable for football and rugby, on the site of the Aylsham Sports Hub at Aylsham High School, to be used by both pupils and the public.	Ongoing
GP70	Wymondham Tennis Club The project improves Wymondham Tennis Club's facilities at Kett's Park in Wymondham. This includes a new fourth court to provide additional capacity in an area of high housing and population growth.	Ongoing
GP71	Crusaders Rugby Football Club The project will provide enhanced facilities including en-suite changing rooms, a new referees' changing space, refurbished and extended social spaces, an accessible entrance, first floor viewing area and new accessible toilet facilities.	Ongoing
GP72	Recreation Road Swimming Pool The project increased car park capacity at the Recreation Road school swimming pool and installed new fencing and a covered bike store. These works increased the community access to the pool.	Complete
GP73	Norwich Parks Tennis The project delivered a total of 5 all-weather tennis courts at Heigham Park and Lakenham Park in Norwich, to add to the provision offered by the Norwich Parks Tennis Programme	Complete
GP74	Plumstead Road Roundabout The project will deliver a new roundabout on Plumstead Road. The delivery also includes the creation of new footways and cycleways, a new pedestrian crossing, road re-alignment and associated services.	Ongoing
GP75	Education- Ormiston Victory Academy This project involves an extensive expansion at Ormiston Victory Academy. This involves a new three-story classroom block and internal remodelling to increase the number of school places to 1500 for ages 11-16.	Ongoing

2021/22 Annual Growth Programme

Ref	Project Description	Status
GP76	<p>Brundall Sports Hub</p> <p>This project will deliver a Sports Hub to include a multi-sport floodlit 3G artificial grass pitch with fencing, floodlighting, maintenance storage container, hard standing pathways, car parking and single storey club house/changing room building.</p>	Ongoing
GP77	<p>Bure Valley Path: Access, Promotion and Recreational Enhancement</p> <p>This project provides improvements to the Bure Valley walking and cycle path, including a crossing over the A140 delivering safe passage for cyclists and pedestrians and the creation of 6 circular walks.</p>	Ongoing
GP78	<p>Kett's Heights</p> <p>This project provides improvements to Kett's Heights community garden, making a more accessible and resilient space, but also providing enhancements to the green links through this area.</p>	Ongoing
GP79	<p>Football Development Centre Bowthorpe – 3G Pitch</p> <p>The project replaced an existing full-sized grass pitch with a 3G full sized flood lit football pitch, increasing the hours of use of the facility.</p>	Complete

2022/23 Annual Growth Programme

Ref	Project Description	Status
GP80	<p>Yellow Pedalway extension (airport to Broadland Northway)</p> <p>The project will provide an off-road cycleway through the extension of the yellow pedalway to the north of the city from the airport to the Broadland Northway, where it will connect to the broader cycle network.</p>	Ongoing
GP81	<p>Wensum Walkway</p> <p>This project will deliver a new elevated walkway (approx. 70 metres in length) on the Wensum Riverside Walk, closing the last gap in this popular, traffic-free route as it travels from New Mills to Carrow Bridge</p>	Ongoing

Ref	Project Description	Status
GP82	<p>Broadland Country Park - Horsford Crossing</p> <p>This project will deliver a road crossing Refuge Island on the B1149 Holt Road at Horsford to cater for both pedestrians and cyclists entering Broadland Country Park.</p>	Ongoing
GP83	<p>Wherryman's Way Access Improvements</p> <p>The Wherryman's Way is a 37.5 mile walking trail from Norwich Train Station to Great Yarmouth Train Station via the Reedham Ferry following the River Yare through the protected landscape of the Norfolk Broads. The project will create access improvements on the route through sections at Surlingham, Bramerton and Hardley Flood allowing improved all ability access. Improvements will include Bank Stabilisation at Surlingham, Bramerton and Hardley Flood, the installation of Bridges at Hardley Flood, the upgrading of footpaths, the restoration of the Bird Hide on Hardley Flood and improvements to the moorings at Rockland Staithe.</p>	Ongoing
GP85	<p>Football Development Centre - Heartsease Open Academy</p> <p>This project replaces a youth sized grass pitch with a new 7v7 3G football pitch, increasing the hours of use of the facility.</p>	Ongoing
GP86	<p>Yare Boat Club</p> <p>This project is part of a multi-stage programme designed to improve and expand the existing rowing facilities based on Thorpe Island and owned by Yare Boat Club. The first phase of this project will be the provision of a new, light weight boatshed on the site.</p>	Ongoing
GP87	<p>Education – Hethersett</p> <p>This project supports further development to Hethersett Academy, in response to 1400 new homes in the village.</p>	Ongoing

2023/24 Annual Growth Programme

Ref	Project Description	Status
GP88	<p>Education – Hethersett & Wymondham</p> <p>This project will:</p> <ul style="list-style-type: none"> • support the delivery of an extension to Hethersett High Academy. • support the delivery of an extension to Wymondham High Academy. 	Ongoing

Ref	Project Description	Status
GP89	<p>Sloughbottom park Regeneration</p> <p>This project will deliver significant regeneration of Sloughbottom Park, including a new 3G Pitch, changing rooms, improvements to the pavilion, a play park, BMX track refurbishment and cycle improvements.</p>	Ongoing
GP90	<p>Easton Village Hall</p> <p>This project will deliver a multi use village hall with off road parking in Easton, to enhance recreational provision, promote social integration, and create a thriving sustainable community.</p>	Ongoing
GP91	<p>Youngs Park Aylsham AGP</p> <p>This project will see the installation of a full-sized 3G artificial grass pitch. This will replace an existing full sized natural turf pitch, extending the hours of use for both formal and recreational football participation.</p>	Ongoing
GP92	<p>Queens Hill Community Park</p> <p>This project will provide improve access to and within the park, and protect the existing woodland. It will deliver formal footpaths, way markers, 5 circular walks, an additional access point to the park, 6 cycle racks and stock fencing.</p>	Ongoing
GP93	<p>Cringleford Country Park</p> <p>This project will deliver a new 17.24 ha country park, including a new accessible bridge crossing for the River Yare, 400m of accessible boardwalk and a new path linking Cringleford to the Yare Valley Walk.</p>	Ongoing
GP94	<p>Venta Icenorum</p> <p>This project will upgrade and expand the car park by 2,000 sq metres, in order to accommodate an increase in number of visitors to this open space. A security barrier will be installed along with 2 EV charging points an new cycle parking bays.</p>	Ongoing
GP95	<p>Hethersett to NRP Cycle Route</p> <p>This project will deliver a section of off carriageway walking and cycling path along Colney Lane, which provides a key active travel route from Hethersett and Wymondham to the Norwich Research Park.</p>	Ongoing
GP96	<p>Guildhall & Exchange Street Regeneration</p> <p>This project will create a public space in the centre of Norwich between Guildhall, Jarrold Department Store and the Market, and the regeneration of exchange street. Reducing traffic creating a safer pedestrianised area to encourage more use of retail and commercial spaces.</p>	Ongoing

Ref	Project Description	Status
GP97	<p data-bbox="206 140 524 180">Hethel Technology Park</p> <p data-bbox="206 196 1805 272">This project will deliver a 3 arm roundabout on Wymondham Road, the realignment of Potash Lane and footway and cycle infrastructure. This infrastructure will provide significant economic benefit by unlocking stalled development sites at Hethel.</p>	Ongoing