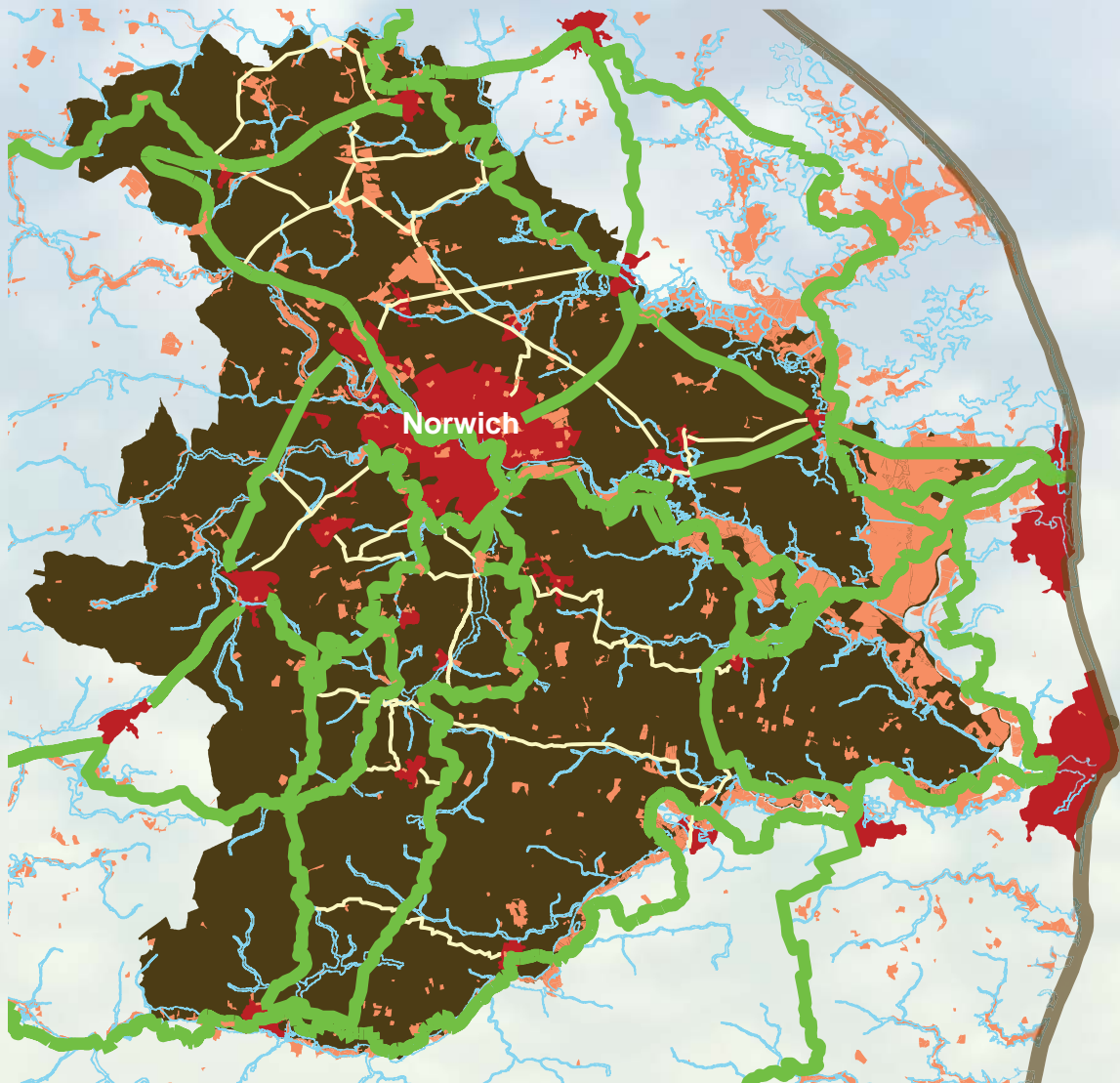




Greater Norwich Development Partnership

GREEN INFRASTRUCTURE STRATEGY

A proposed vision for connecting people places and nature



Annexes and Appendices

November 2007


CHRIS BLANDFORD ASSOCIATES

Environment Landscape Planning

Greater Norwich Development Partnership

GREEN INFRASTRUCTURE STRATEGY

A proposed vision for connecting people, places and nature

Approved By: Dominic Watkins
Signed: .....
Position: Director
Date: 6th November 2007

Annexes and Appendices

CHRIS BLANDFORD ASSOCIATES

Environment Landscape Planning

11104901R_GNDP GI Strategy Annexes_Final_DW_11-07

CONTENTS

ANNEX A - FIGURES

Existing Baseline Figures:

- 1.1 The Green Infrastructure Strategy Area**
- 4.1 Countryside Character**
- 4.2 Settlement Pattern & Woodland**
- 4.3 Norwich Urban Area Character – Settlement Evolution, Street Pattern & Woodland**
- 4.4 Norwich Urban Area Character – Visual Connectivity & Landmarks**
- 4.5 Norwich Urban Area Character – Urban Rural Interface**
- 4.6 Norwich Urban Area Character – Movement, Nodes & Gateways**
- 4.7 Landform**
- 4.8 Hydrology and Flood Risk**
- 4.9 Designated Nature Conservation Sites**
- 4.10 Biodiversity Assessment: Woodland Habitats**
- 4.11 Biodiversity Assessment: Wetland/Open Water Habitats**
- 4.12 Biodiversity Assessment: Grassland Habitats**
- 4.13 Biodiversity Assessment: Heathland Habitats**
- 4.14 Cultural Heritage**
- 4.15 Strategic Open Space**
- 4.16 Leisure, Recreation and Tourism Destinations**
- 4.17 Access and Movement : Greater Norwich Area**
- 4.18 Access and Movement : Norwich Urban Area**
- 4.19 Transportation/Service Infrastructure and Connections**
- 8.1 Existing Strategic Green Infrastructure Initiatives**

Proposals Figures:

- 5.1 The Proposed Ecological Network : Greater Norwich Area**
- 5.2 The Proposed Ecological Network : Norwich Urban Area and Fringes**
- 6.1 The Proposed Sustainable Movement Network : Greater Norwich Area**
- 6.2 The Proposed Sustainable Movement Network : Norwich Urban Area and Fringes**
- 7.1 The Proposed Green Infrastructure Network for the Greater Norwich Area**
- 8.2 Potential Green Infrastructure Projects**

ANNEX B - GLOSSARY

ANNEX C - SCHEDULE OF POTENTIAL GREEN INFRASTRUCTURE PROJECTS

APPENDIX 1 – ANALYSIS OF KEY ISSUES AND OPPORTUNITIES

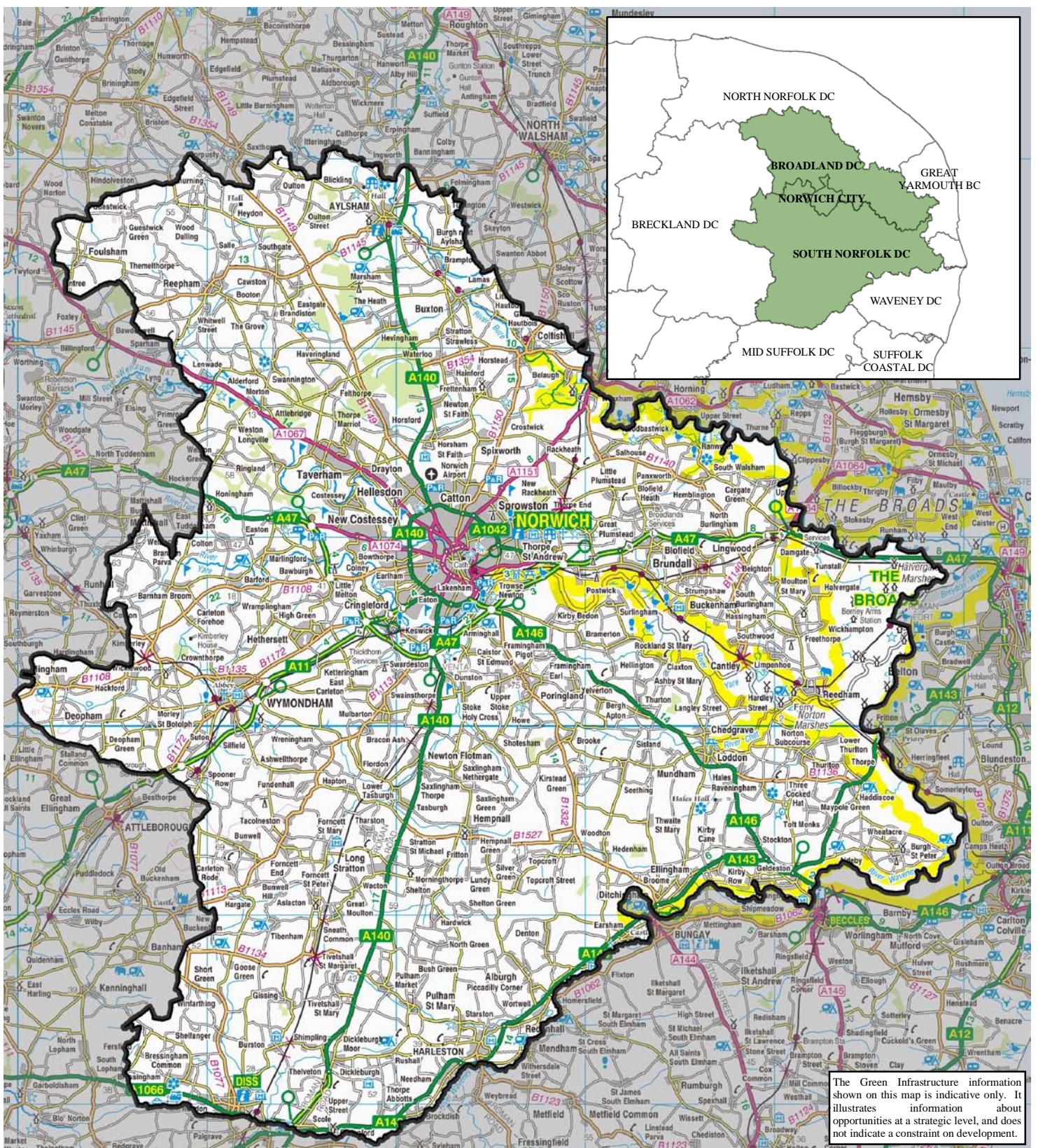
Green Infrastructure Policy Context
Environmental Character and Local Distinctiveness
Biodiversity and the Natural Environment
Greenspaces and Access Networks

APPENDIX 2 – SUPPORTING INFORMATION

Project Brief
Record of Stakeholder Consultation
Greenspace Planning Policy Checklist
Greenspace Management Options

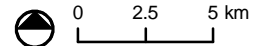
ANNEX A

EXISTING BASELINE FIGURES



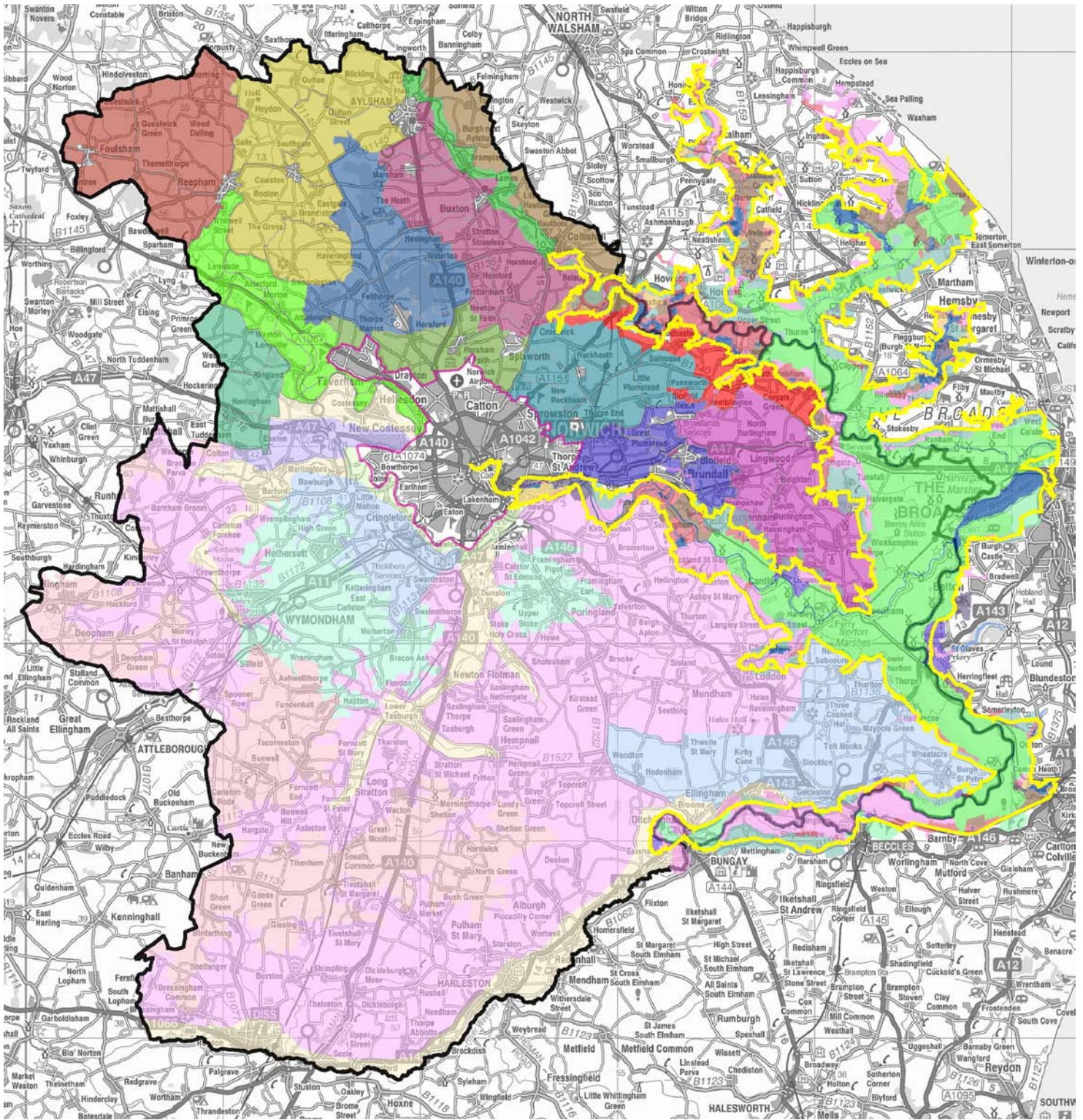
- KEY**
- Broads Authority Area
 - The Strategy Area

This map is based on Ordnance Survey material with the permission of Ordnance Survey on behalf of the Controller of Her Majesty's Stationery Office © Crown copyright. Unauthorised reproduction infringes Crown copyright and may lead to prosecution or civil proceedings. OS Licence Number 100019340 2007



F:\Projects\11104901_Gtr_Norwich_GI_Strat\GIS\Projects\september_rev\11104901_01_01_sa_revC.mxd

Figure 1.1
The Green Infrastructure Strategy Area



KEY

Broadlands District Principal Character Areas

- A: [Green]
- B: [Light Green]
- C: [Red]
- D: [Yellow]
- E: [Blue]
- F: [Purple]
- G: [Light Blue]
- H: [Brown]
- I: [Dark Green]

South Norfolk District Character Types

- A: Rural River Valley
- B: Tributary Farmland
- C: Tributary Farmland with Parkland
- D: Settled Plateau Farmland
- E: Plateau Farmland

Broads Draft Character Types

- A: Upland
- B: Industrial/Early Post Industrial
- C: Carr Woodland
- D: Estuarine Marshland
- E: Unknown
- F: Heathland
- G: Estuary
- H: Drained Peat or Clay/Peat Mix

Other Character Types

- J: Fen
- K: Settlement Fringe
- L: Coastal Strip
- M: Rivers and Broads

Other Features

- F: Valley Urban Fringe
- G: Easton Fringe Farmland
- I: Fen
- J: Broads and Other Permanent Water Bodies
- K: Settlement Fringe
- L: Coastal Strip
- M: Rivers and Broads
- Norwich City (No LCA data available)
- Broads Authority Area
- Study Area

This map is based on Ordnance Survey material with the permission of Ordnance Survey on behalf of the Controller of Her Majesty's Stationery Office © Crown copyright. Unauthorised reproduction infringes Crown copyright and may lead to prosecution or civil proceedings. OS Licence Number 100019340 2007

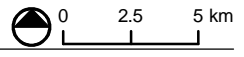
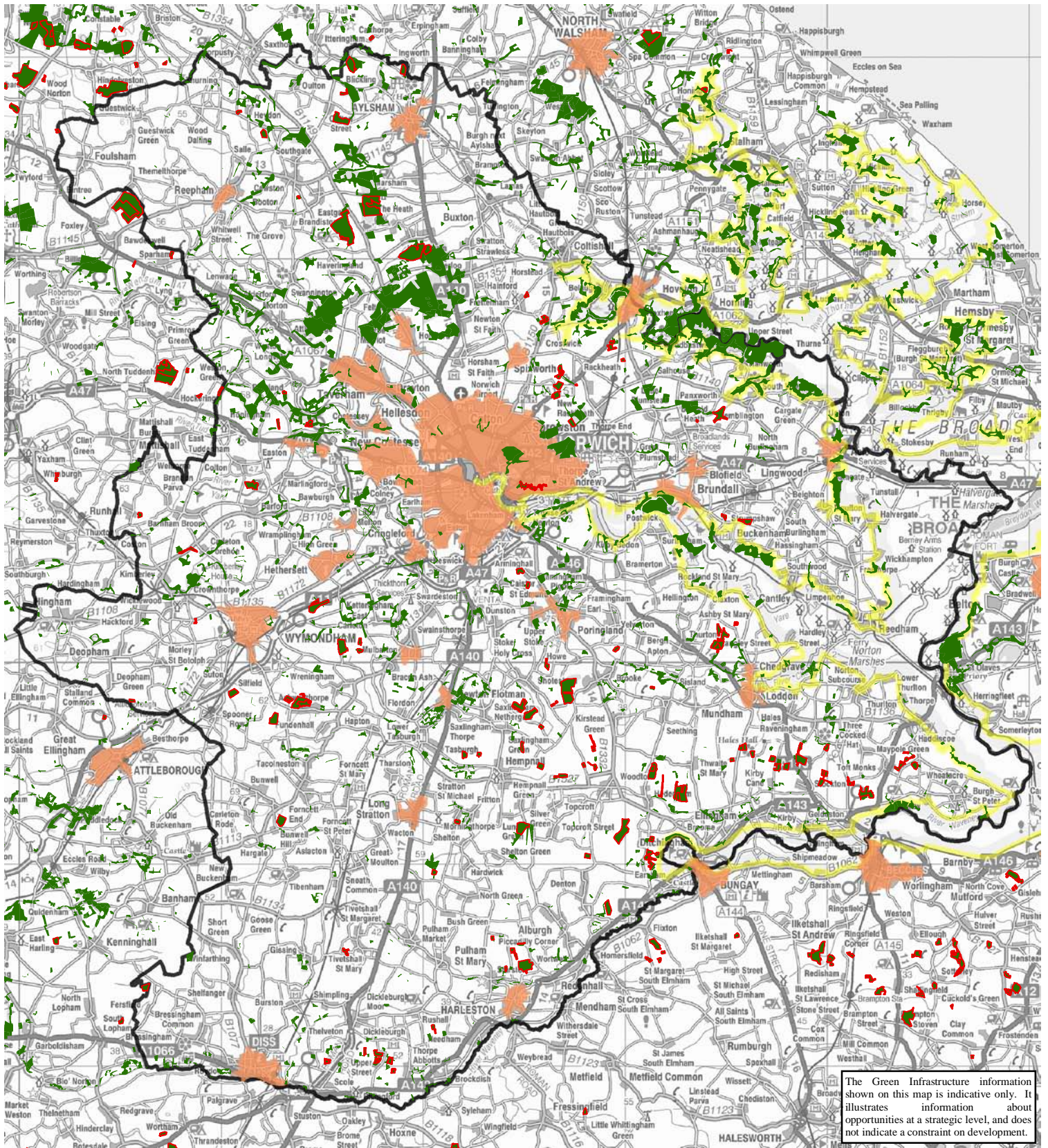


Figure 4.1
 Countryside Character

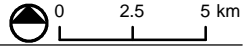


The Green Infrastructure information shown on this map is indicative only. It illustrates information about opportunities at a strategic level, and does not indicate a constraint on development.

KEY

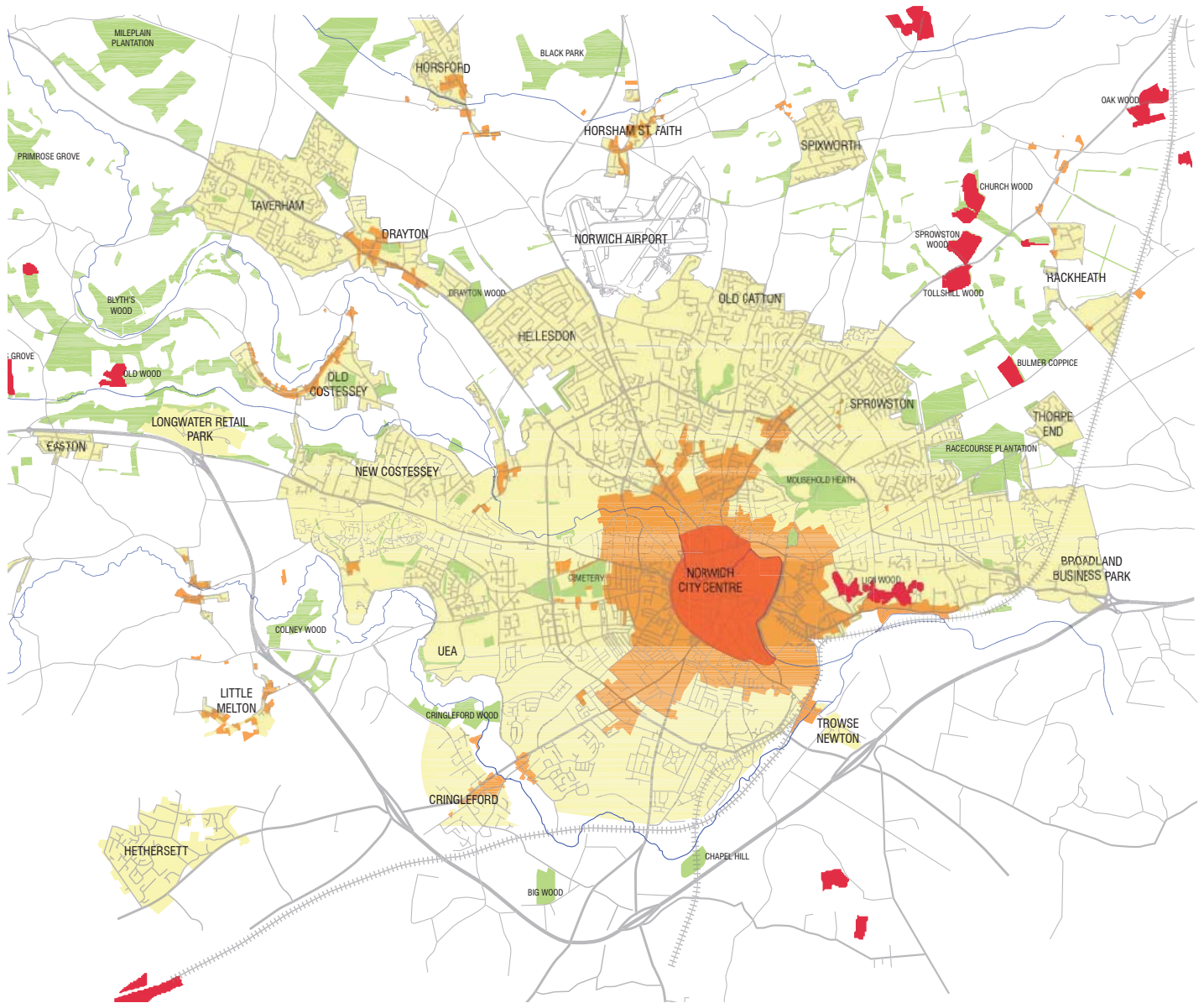
- Ancient Woodland
- Forestry Commission Woodland Data
- Broads Authority Area
- Main Settlements
- Study Area

This map is based on Ordnance Survey material with the permission of Ordnance Survey on behalf of Her Majesty's Stationery Office © Crown copyright. Unauthorised reproduction infringes Crown copyright and may lead to prosecution or civil proceedings. OS Licence Number 100019340 2007.



F:\Projects\11104901_Gtr_Norwich_GI_Strat\GIS\Projects\september_revs\11104901_04_02_stlmt_wldd_A4.mxd

Figure 4.2
 Settlement Pattern and Woodland



KEY

- Indicative Urban Areas - Circa 1260
- Indicative Urban Areas - Circa 1891
- Indicative Urban Areas - Circa 2007
- Woodland Areas (Indicative)
- Ancient Woodland (Indicative)

The Green Infrastructure information shown on this map is indicative only. It illustrates information about opportunities at a strategic level, and does not indicate a constraint on development.

