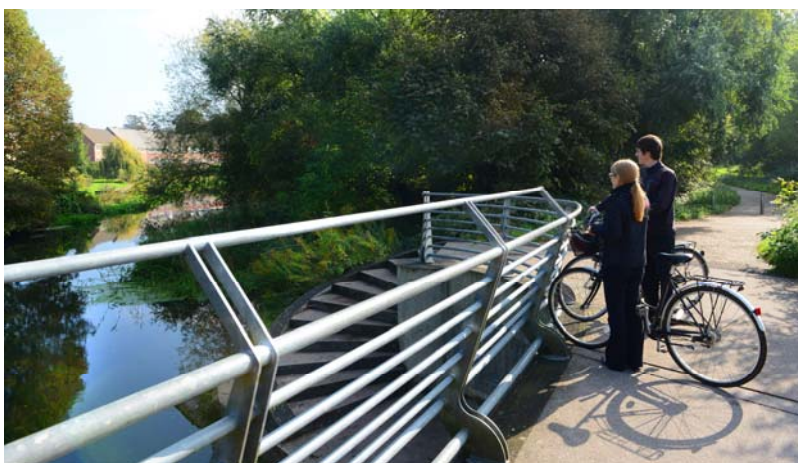


Greater Norwich Growth Board

Greater Norwich Infrastructure Plan

April 2017



Jobs, homes, prosperity for local people



Contents

	Page
1. Introduction	2
2. Funding and Delivery This section outlines funding and delivery arrangements including the City Deal and the New Anglia LEP Growth Deal	5
3. Key Infrastructure This section outlines the infrastructure required to support growth	8
4. Major Growth Locations This section identifies where growth is expected to happen in the next few years	13
 Appendix 1 Infrastructure Framework This section lists all the currently planned strategic infrastructure projects.	

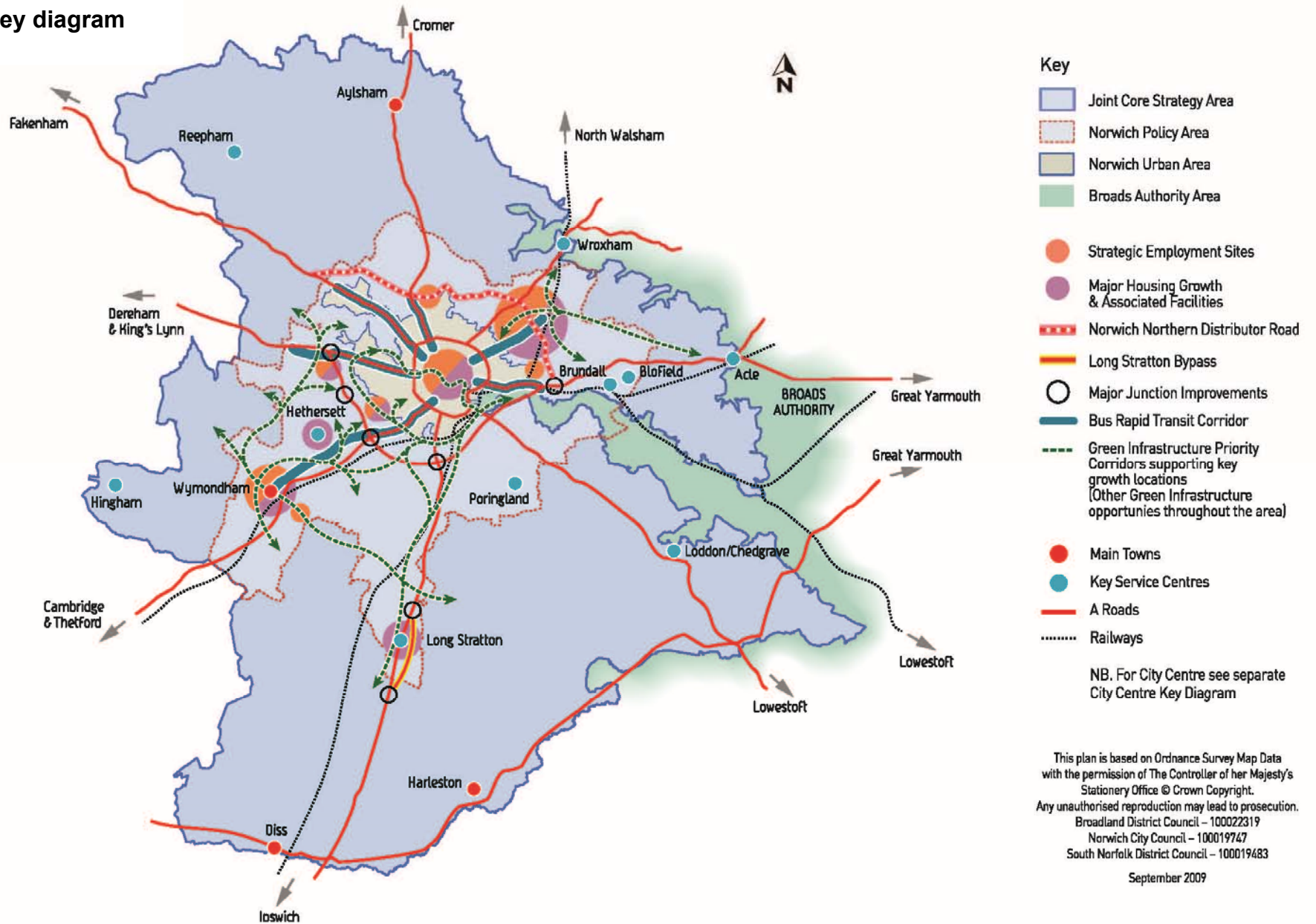
1. Introduction

- 1.1 The Greater Norwich area, covering the districts of Broadland, Norwich and South Norfolk, is a key engine of growth for the United Kingdom. The Joint Core Strategy for the area (JCS) aims to deliver 27,000 jobs and 37,000 homes between 2008 and 2026. Greater Norwich is one of the fastest growing areas in the country and has established itself as a leader in health and life sciences, digital creative and advanced manufacturing and engineering. The Greater Norwich City Deal, signed with government in December 2013, aims to bring an additional 13,000 jobs and 3,000 homes to the area, as well as 6,000 jobs in construction. Through the City Deal the Greater Norwich Growth Board partners' ambition is to enable the existing world class knowledge to develop and grow into world class jobs and a thriving economy.
- 1.2 The Greater Norwich Local Plan (GNLP) is in an early stage of production. It will identify and provide for additional housing and jobs growth required to 2036. When it is adopted, which is scheduled for 2020, it will supersede the JCS and other local plan documents.
- 1.3 This document, the Greater Norwich Infrastructure Plan (GNIP), helps co-ordinate and manage the delivery of strategic infrastructure to support growth, a high quality of life and an enhanced natural environment¹. It informs prioritisation of investment and delivery. It is not an exhaustive list. It is a living document, updated annually to reflect the latest information.
- 1.4 The Greater Norwich Infrastructure Plan supports the delivery of the JCS, other Local Plan documents for the area, local economic strategies, the Greater Norwich City Deal, and the Strategic Economic Plan (produced by the New Anglia Local Economic Partnership). It draws on work to identify and secure the key infrastructure required to support growth as set out in the Joint Core Strategy Infrastructure Framework (included in JCS Appendix 7 and 7a). The updated Infrastructure Framework is included as Appendix 1.
- 1.5 While mainstream funding provides the primary support for new infrastructure, contributions from new development, such as Section 106 agreements and Community Infrastructure Levy are also important. Section 2 of this report provides an overview of funding and delivery mechanisms.
- 1.6 Section 3 outlines the range of infrastructure required to support growth including that delivered and funded by other means – e.g. Asset Management Plans, or infrastructure directly delivered or funded by development.
- 1.7 The Greater Norwich Infrastructure Plan concentrates on the key infrastructure requirements that support the major growth locations (see figure one – Joint Core Strategy Key Diagram) or the overall scale of growth. Individual developments tend to require smaller scale infrastructure that is not detailed here. Section 4 provides an overview of progress expected in the next few years on significant sites.

¹ The GNIP evolved from the previous Local Investment Plan and Programme to provide a more focused delivery plan.

- 1.8 Many elements of key infrastructure can be implemented incrementally to reflect emerging patterns of growth. This includes enhancements to public transport corridors to move them towards fully fledged Bus Rapid Transit, elements of the green infrastructure network and extensions to cycle routes.
- 1.9 The Greater Norwich Infrastructure Plan provides greater detail on the schemes for delivery in the shorter term. It does not seek to fundamentally review or re-prioritise agreed infrastructure, but is a means of refreshing and managing the strategic programme, keeping it up to date and fit for purpose.
- 1.10 However, as time moves on and projects evolve, some differences with previous work may be noted. This is because:
- Project titles can change to better reflect the details of the proposals.
 - A project can support more than one topic, for example a cycle route can be both green infrastructure and transport infrastructure.
 - The expected timing of infrastructure delivery can change, for example to reflect updated assumptions on the timing of the development it is intended to support, or because funding has become available.
 - Significant changes in timing can alter the nature of any solution and the capacity of existing infrastructure to support growth can have changed in the interim.

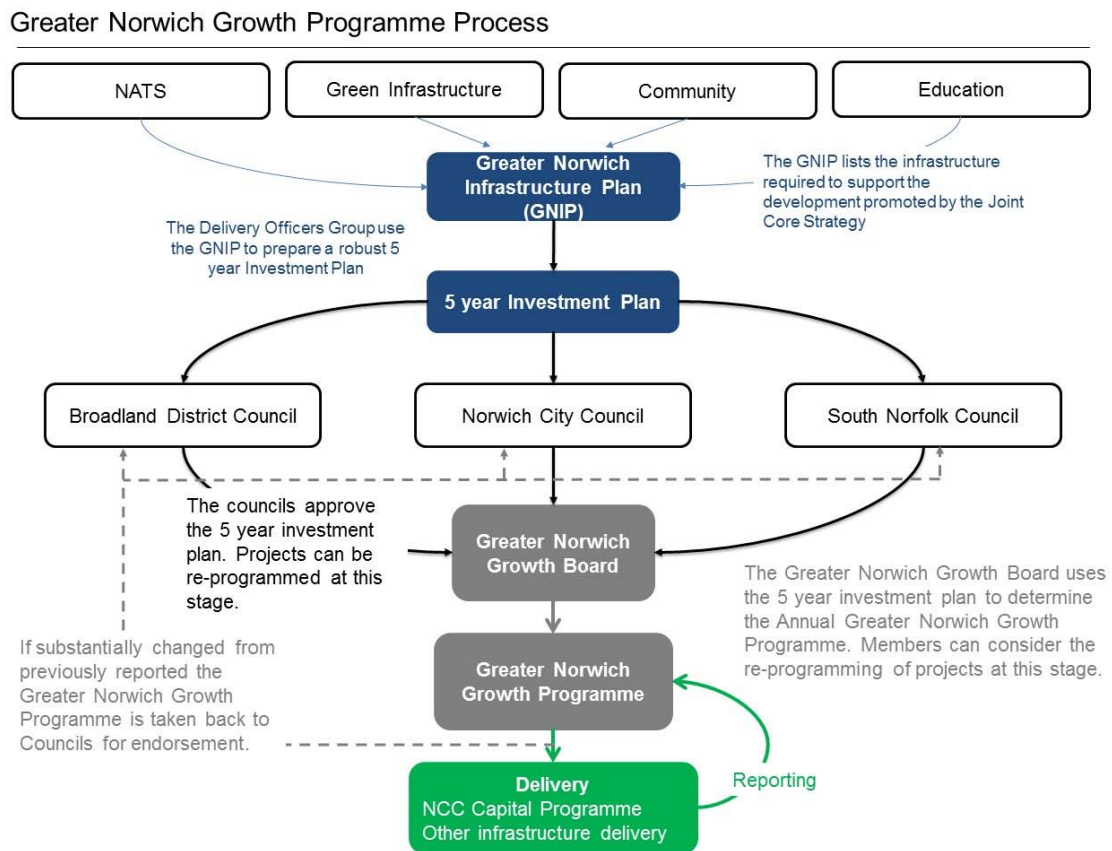
Figure 1: Key diagram



2. Funding sources and delivery planning

- 2.1 In December 2013, Broadland, Norwich City, Norfolk County, South Norfolk councils and the New Anglia LEP signed a City Deal with central government. A core theme supports infrastructure delivery to accelerate planned growth.
- 2.2 The City Deal identifies a £440m infrastructure investment programme developed from the JCS Infrastructure Framework. The councils, with the LEP, have put in place pooled funding and governance arrangements to manage timely delivery of the programme. To help fund the programme about £78m of Community Infrastructure Levy is identified from the housing trajectory (excluding the proportion retained for local communities).
- 2.3 Estimates for the total forecast amount of CIL collected over the plan period have reduced over previous years, in part due to the increase in exemptions granted. It must be noted that some estimates have been made for inflationary increases in CIL forecasts and infrastructure costs although this is not across the full spectrum of projects presented in the GNIP. The funding gap is likely to close as other funding streams are secured.
- 2.4 The GNIP provides the longer term context to inform short term investment plans and funding decisions. The councils manage the 5-year Infrastructure Investment Plan and Annual Growth Programme collectively, identifying projects for delivery and packages of funding. There is a collaborative approach to funding the programme through pooling of the Community Infrastructure Levy, Local Growth Fund, use of mainstream funding, identification of other funding such as pooled business rates or New Homes Bonus, and, where required and agreed, the use of borrowing. The Greater Norwich Growth Board manages the risks to delivery and provides a robust means of agreeing ongoing priorities.
- 2.5 The GNIP Infrastructure Framework looks over longer term and tends to identify the earliest date on which a piece of infrastructure can be delivered taking account of broad indications and reasonable assumptions of funding availability. The 5-year Infrastructure Investment Plan and Annual Growth Programme take a shorter term view and consequently prioritise schemes based only on known funding sources or those with a high degree of certainty.
- 2.6 Local communities will retain 15% of Community Infrastructure Levy contributions to deliver schemes within their area (25% where there is a Neighbourhood Plan in place).

Figure 2: Greater Norwich Growth Programme process



Progress on delivering key infrastructure

- 2.7 The Postwick Hub is now complete. The Northern Distributor Road has been approved through the Nationally Strategic Infrastructure Projects process and construction has now started on site, with completion scheduled for late 2017, earlier than originally scheduled.
- 2.8 A major improvement at Thickthorn to address existing and future problems has been included in the trunk road programme 2015-21. The scheme had previously been identified in the Infrastructure Framework with an expectation that it would be developer funded at an indicative cost of at least £30m. The Government announcement essentially releases this level of CIL investment for other elements of the Infrastructure Framework. The £2m LGF previously allocated for Thickthorn has been switched to Longwater in 2015/16-17/18.
- 2.9 The Norwich Area Transportation Strategy is a New Anglia Strategic Economic Plan priority. The New Anglia Growth Deal announced in July 2014, and the more recent (February 2015) Growth Deal 2 announcement, confirmed Local Growth Funding of £11m for scheme delivery from 2015-2020. Final sign-off of the funding will be made by the New Anglia Local Transport Body (the Local Transport Body is set up across Norfolk and Suffolk to provide advice to the LEP Board and manage central government funding devolved to the LEP for transport schemes).

- 2.10 Improvements for buses, cyclists and pedestrians, which also improve the public realm in the city centre have been introduced. These schemes funded from a variety of sources, include projects on Grapes Hill, Chapelfield North, Theatre Street, Rampant Horse Street, St Stephens Street, Tombland, St. Augustines, Westlegate and Red Lion Street. The schemes contribute to the longer term programme to implement a 20 mile per hour limit throughout the city centre and to reduce through traffic.
- 2.11 These improvements are partly funded by £3.7m Cycle City Ambition Grant, awarded in August 2013, which, with match funding, has led to over £5.5m investment in cycling for the period up to March 2016. A successful second round bid in February 2015 awarded a further £8.4m which, with match funding provides £15.4m investment for the period up to March 2019.

3. Key Infrastructure

3.1 There are a range of topic based mechanisms for the delivery of Infrastructure, including plans and strategies with their own objectives, priorities and implementation plans. The GNIP is guided by these topic plans and processes and also influences them to meet needs arising from emerging growth pressures. The GNIP's main focus is on green infrastructure, transport, schools and community facilities such as libraries, sports, recreation and Neighbourhood Plan priorities. This section of the report also includes other infrastructure which is required to support growth but is funded and delivered by other means and does not feature in the Infrastructure Framework. Work on utilities infrastructure and capacity constraints is ongoing.

Green Infrastructure

3.2 A Green Infrastructure Delivery Plan was produced in 2009 focusing on the two main geographical areas identified for significant development: South West and North East Norwich. It identifies a number of schemes or projects to contribute to the protection and enhancement of the strategic green infrastructure network and continues to inform delivery.

3.3 However the understanding of need and prioritisation is always under revision and as information becomes available, projects are refined and re-prioritised. The projects in the Greater Norwich Infrastructure Plan are based on the need to mitigate the potential impacts on Natura 2000 sites under the Habitat Regulations and an understanding of the timing of development served by the identified green infrastructure corridors.

3.4 Green infrastructure is identified in the Strategic Infrastructure Programme.

Transport

3.5 Provision is guided by the Norwich Area Transportation Strategy and its implementation plan developed alongside the Joint Core Strategy. The proposals in the Implementation Plan (updated in 2013) include:

- plans for improving transport and accessibility in the city centre
- improving the cycling and walking network across Norwich
- further improvements to rail and bus services building towards a Bus Rapid Transit system for the city
- capacity improvements to the A47 Postwick interchange (Postwick Hub)
- delivering the Northern Distributor Road
- taking additional steps to improve traffic flows in the area

3.6 A number of elements in the Implementation Plan are directly related to the delivery of growth, such as Bus Rapid Transit routes associated with major growth locations. Implementation is kept under review to reflect housing and employment delivery and the availability of further funding.

Schools

The County Council is responsible for ensuring sufficient school places are provided and works with a variety of providers. Growth can often be accommodated through expansion of existing schools but new schools are also required to serve large scale growth. Funding comes from mainstream capital funding, S106 and CIL. The County Council develops a capital programme which is reflected in this GNIP. More extensive information on the capital programme can be found [here](#).

Waste and recycling

- 3.7 Responsibility for waste disposal and planning, including Household Waste Recycling Centres, lies with Norfolk County Council. The County Council has to ensure that waste facilities coming forward provide adequate capacity to dispose of and/or treat all other kinds of waste, including commercial and industrial, construction and demolition, and hazardous waste.
- 3.8 There are currently seven Household Waste Recycling Centres in the area. One additional centre will be required by 2026, with the preferred location being the Old Catton, Sprowston, Rackheath and Thorpe St Andrew Growth Triangle.

Police, Ambulance and Fire services

- 3.9 Development will be well designed, to include safe and accessible space where crime and fear of crime are minimised. Access to police services through Safer Neighbourhood Teams will require new local facilities in major growth locations, though there may be scope to co-locate these with other community facilities. Norfolk Constabulary has indicated the need for a deployment base at Postwick junction and beat offices at Thorpe St Andrew and Rackheath.
- 3.10 Additional ambulance service capacity is expected to be met through a reorganisation of existing provision and the use of strategically located stand-points or facilities at hospitals, with limited impact on capital expenditure.
- 3.11 Fire appliances must be based at stations for most of the time. The existing fire stations across the area are well positioned in relation to the strategic growth locations and are expected to provide the necessary levels of service.

Health Care

- 3.12 Health care facilities and the infrastructure needed to promote healthy lifestyles are required. The precise scale and nature of the facilities required will be dependent on the evolving nature of healthcare provision and will be kept under review.
- 3.13 NHS England continue to engage with the GNGB partners about the need for health and social care facilities, including potential facilities at Old Catton/Sprowston and Rackheath, and the expansion of existing facilities elsewhere.

Community infrastructure

- 3.14 Parishes will receive 15% of the CIL to deliver community infrastructure projects that they deem necessary to support growth in their area. This rises to 25% where there is an adopted Neighbourhood Plan. Broadland District Council and South Norfolk Council continue to engage with parishes about the delivery of infrastructure, including how this relates to the development and implementation of Neighbourhood Plans. In the Norwich City Council area there are no parishes and the council will be consulting directly with communities.

Libraries

- 3.15 The County Council has a statutory responsibility to provide a comprehensive and efficient library service. New housing development may be served by a new library building, fixtures and stock, upgrading or providing extra capacity at an existing library or providing a mobile service. Funding requirements may be phased throughout the Plan period dependent on the trajectory of development at any particular location.

Recreation

- 3.16 Recreational facilities are provided and maintained by a number of different organisations, both public and private. Additional recreational facilities required to serve growth will be provided on-site on larger new developments and through improvements to existing facilities. Up to date evidence from the playing pitch and built sports facilities strategies is being used to inform prioritisation decisions and to assist sports facilities providers in accessing grant funding.

Housing

- 3.17 The Joint Core Strategy policy target for delivery of affordable housing is 33% of total housing delivery. Affordable housing will continue to be negotiated on a site by site basis alongside other direct development requirements. As strategic infrastructure is funded from pooled sources, negotiations on Affordable Housing provision do not directly impact on delivery of the Strategic Infrastructure programme.

Electricity

- 3.18 The partners continue to work with UK Power Networks to explore mechanisms to ensure the cost of electricity infrastructure is shared proportionately between planned developments. No significant barriers to the delivery of required infrastructure have been identified, although there are some localised areas with a current shortage of capacity for future growth, such as the NRP and parts of the A11 corridor.

Gas

- 3.19 Limited improvements to gas infrastructure are required across the area and do not provide a constraint.

Water

- 3.20 Significant investment is required in infrastructure to support growth and meet the requirements of the Habitat Regulations. Water quality is crucial,

due to the number of protected sites relying on high water quality, including the Broads.

- 3.21 Anglian Water’s “Water Resource Management Plan 2015” covers the period 2015 to 2040. Some £25.6m of investment is proposed in the Norwich and the Broads water resource management zone during the period 2015-20 to deliver a relocation of the water extraction point on the River Wensum, improve water efficiency and enhance metering. Further investment is proposed during post-2030 to resolve longer term issues. The plan also identifies additional options for maintaining the supply-demand balance should the future deficit significantly exceed current expectations.

Waste Water

Growth in several parts of the area is dependent on investment at sewage treatment works. Investment in sewerage capacity is required to the north and the south of Norwich and to serve the city centre. The timing of these investments will have an important effect on the phasing of development. The partners are working closely with Anglian Water to identify the best means of ensuring infrastructure is provided in a timely manner to serve development.

Table 1: Sewerage investment required to support major growth

Broadland : North East Growth Triangle	A new strategic sewer to Whitlingham would use existing way leaves on the route of the existing sewer and can be upgraded in sections. Delivered by developers and Anglian Water through requisition order process.
Norwich : Three Score, Bowthorpe South Norfolk : North Hethersett; Costessey, Lodge; Farm, Easton	Yare Valley sewer upgrade
Long Stratton	Strategic sewer

Flooding

- 3.22 The great majority of development proposed in the JCS is located in areas with no fluvial/tidal flood risk. Any development proposed in areas of some flood risk (zone 2), will have to provide a flood risk assessment to show how flood risk can be mitigated. This will apply mainly to limited areas of the city centre. In Broadland and South Norfolk, the site allocations documents have actively avoided allocating any new sites with any Zone 2 or 3 flood risk.
- 3.23 Developers will work with the relevant public authorities to minimise flood risk through a combination of high quality urban design and green infrastructure, as well as use of Sustainable Drainage Systems.

Telecommunications

- 3.24 High speed and reliable broadband infrastructure is critical to economic development. It is also a key component in tackling deprivation and improving access to services amongst disadvantaged and isolated communities.
- 3.25 The 'Broadband Strategy for Norfolk' highlights the importance of broadband to enable businesses to grow, encourage investment and reduce the digital divide and is being used to identify priorities and investment opportunities in the area.
- 3.26 The "Better Broadband for Norfolk" project began in 2012 with phase 1 completed at the end of 2015. Phase 2 was announced in January 2015. On completion the project aims to ensure that 92% of premises in Broadland, 99% in Norwich and 86% in South Norfolk, are connected to the broadband fibre network providing access to 24mb/s. The aim of the project will be to supply the majority of Norfolk with access to superfast broadband and everyone with at least 2mb/s.

4. Major Growth Locations

- 4.1 Infrastructure planning reflects the distribution of planned growth illustrated in figure one. Major growth locations which are under construction or likely to start on site in the near future are listed below.

North East Norwich

- 4.2 The North East sector includes the Old Catton, Sprowston, Rackheath Thorpe St Andrew Growth Triangle as well as a number of adjacent developments. It is the largest single growth location in the Joint Core Strategy seeking to deliver 10,000 additional new homes (on top of existing commitments in 2008), a 25 hectare expansion of Broadland Business Park, 25 hectares of new employment land at Rackheath and 30 hectares of new employment land at the airport. In addition, planning permissions have been granted for a 40 hectare Aeropark on the north side of the airport, and a 12,750m² office development on the old hospital site at Thorpe St Andrew.
- 4.3 Successful delivery is dependent on the Postwick Hub and the Norwich Northern Distributor Road. The Postwick Hub is now complete. The Northern Distributor Road has been approved through the Nationally Strategic Infrastructure Projects process and work has now started on delivery. The NDR is due to be completed by December 2017.
- 4.4 Broadland District Council is producing an Area Action Plan to coordinate planning and delivery across the triangle. The Area Action Plan was subject to examination in July 2015. It is expected that the Area Action Plan will be adopted in 2016.
- 4.5 Although the Area Action Plan has yet to be adopted there are already significant planning consents in the Growth Triangle that total over 5,800 dwellings. In addition, applications have already been lodged for approximately 1,300 further dwellings. While delivery will span a number of years all these are planned to be on site within the next 3 years. Emerging developments in the north east sector as a whole are summarised in table two below.

Table 2: North East sector – significant sites for early delivery

Site/ Location	Development	Status	Expected start
Norwich International Airport	Aeropark 40ha aviation related business development	Permitted	2015
Land East of Buxton Road (Spixworth)	225 New Homes (minimum)	Permitted	2018/19
Home Farm, Sprowston	152 Homes	Permitted	Commenced
Beeston Park (North of Sprowston and Old Catton)	3,520 dwellings, employment, shops, services, cafes, restaurants and pubs, a hotel, two primary schools, community space	Permitted	2018/19
White House Farm (Sprowston)	1233 dwellings, a link road, a primary school, and a large woodland park	Permitted (pre-CIL)	Commenced
Land Adj. Salhouse Road (Rackheath)	79 dwellings and ancillary works	Permitted	2015
Brook & Laurel Farms including Broadland Business Park North (Thorpe St Andrew)	600 dwellings, 14.6ha of employment land and local centre plus a link road between Plumstead Rd and BBP.	Permitted (pre-CIL)	2019/20
Broadland Business Park South (Thorpe St Andrew)	5 ha undeveloped	Remainder of allocation	Commenced
Broadland Gate (Thorpe St Andrew)	c18ha of employment land associated with the Postwick Hub junction	Permitted Junction Complete	
Former northside hospital (Thorpe St Andrew)	12,750m ² office development	Permitted existing buildings demolished	
Pinebanks – (Thorpe St Andrew)	231 dwellings	Permitted	2017/18
Griffin Lane - (Thorpe St Andrew)	71 dwellings & community building	Permitted	2017/18

Site/ Location	Development	Status	Expected start
Repton Avenue, Old Catton	Mixed Use Development of 340 Residential Dwellings with 5,640 sqm of Small Business Units (Outline)	Application Submitted	2017/18
Land South of Green Lane East, Rackheath	157 Dwellings together with Associated Access, Open Spaces & Infrastructure (outline)	Application Submitted	2018/19
Land South of Salhouse Road, Sprowston	Proposed development comprising a minimum of 803 dwellings with associated infrastructure; site for a new primary school; land for a Bus Rapid Transit (BRT) scheme; a section of orbital link road; retained areas of woodland and creation of open space (Outline)	Resolution to Grant Planning Permission	2018/19
Land South of Salhouse Road, Sprowston	Outline planning application for the erection of up to 380 residential dwellings (inc. Affordable Housing) with new vehicular, cycle and pedestrian access from Salhouse Road and new pedestrian and cycle access from Plumstead Road incorporating an emergency vehicular access. The provision of open space, sustainable urban drainage systems; associated landscaping, infrastructure and earthworks (Outline)	Application Submitted	2019/20
Land off Green Lane West, Rackheath	Residential Development of 50 units (Outline)	Resolution to Grant Planning Permission	2019/20

4.6 The original delivery trajectory and infrastructure delivery profile was developed to support a strong start within the Triangle. This remains the case.

Norwich City

- 4.7 The city is unique as a growth location as the majority of the commitment of 8,600 dwellings will be delivered on many smaller sites within the existing urban area. Some of the more significant sites with early delivery are identified in table three below. The largest site, for 1000 dwellings at Bowthorpe, and developments at UEA are included under the South West Sector as they will share some of the same infrastructure.

Table 3: Norwich City - significant sites for early delivery

Site/ Location	Development	Status	Expected start
City Centre			
St Ann's Wharf, King Street	Mixed use development of 437 dwellings plus retail and leisure uses	Permitted	Commenced
Mountergate West	180 dwellings	Allocation	2016/17
Anglia Square	Upwards of 1,000 dwellings	Application to be submitted spring 2017	2020/21
Muspole Street	57 dwellings	Permitted	2016/17
Barrack Street	Mixed use office (20,500sqm), shop units, hotel and 200 dwellings	Permitted	Part implemented
Edge of centre (Dereham Rd corridor)			
Goldsmith Street	105 dwellings	Permitted	Commenced (complete 2018)
Edge of centre to south east sector			
Carrow Quay	250 dwellings	Permitted	2015/16
Lakenham Sports Club	75 dwellings	Permitted	Underway (near completion)
North west sector (Fakenham Rd corridor)			
Havers Road	100 dwellings	Allocated	2018/19

- 4.8 These sites generally only require improvements to provide open space requirements and access but do pressure the city wide transportation networks and education provision. Education, transport and green infrastructure projects are required across the city to meet current development rates, although because of the area wide nature of many of these improvements development is not directly dependent on infrastructure delivery.

South West

Table 4: South West sector - significant sites for early delivery

Site/ Location	Development	Status	Expected start
Threescore-Bowthorpe	1000 dwellings, plus housing with care	Permitted (pre-CIL)	Underway
Bartram Mowers, Bluebell Road	Accommodation for the elderly (blocks with 62 rooms and 60 dwellings)	Allocated	2017/18
Norwich Research Park (UEA)	Enterprise Centre	Permitted	Underway
Norwich Research Park (Colney)	43ha available for expansion, with outline permission. Centrum and Bob Champion Medical Research buildings completed. Quadram Institute part-way through construction	Permitted	Underway
Roundhouse Park (Cringleford)	Approx. 120 dwellings remaining (total 999 dwellings)	Permitted (pre-CIL)	Underway
Newfound Farm (Cringleford)	Up to 650 dwellings (Barratts). Reserved matters application expected shortly.	Permitted	2018/19
Land north and south of A11 (Cringleford)	Up to 650 dwellings (outline permission). Variation of consent to split site into two parcels	Permitted	2018/19
North village (Hethersett)	1196 dwellings (Access road in and houses under construction)	Under construction	2016/17
Gt Melton Rd (Hethersett)	Approx. 80 dwellings remaining (total 151 dwellings)	Permitted (pre-CIL)	Underway
South Wymondham (inc. BOCM Paul & Sale Ground)	1,308 dwellings (mostly permitted in outline, some with some reserved matters agreed. Some construction underway, with a number of roads in place	Permitted (pre-CIL)	Underway

Site/ Location	Development	Status	Expected start
North-west Wymondham (Norwich Common, Carpenter's Barn, Spinks Lane, Wymondham RFC site etc.)	Approx. 550 permitted dwellings remaining to be constructed. Up to 390 further dwellings were granted outline approval on appeal in September 2016 (total 1338 dwellings)	Permitted (some pre-CIL, some post-CIL)	Underway
Land adj Gonville Hall, Wymondham	Up to 320 dwellings granted outline planning permission on appeal in September 2016.	Permitted	2017/18
Wymondham smaller sites	69 dwellings (allocated and permitted)	Underway	2016/17
Browick Road, Wymondham	Allocation of 15ha (net) of B1, B2, B8 employment land	Allocated	2017/18
Queens Hills (Costessey)	Approx. 280 dwellings remaining (total 1,881 dwellings)	Permitted (pre-CIL)	Underway
West of Lodge Farm (Costessey)	Approx. 400 dwellings remaining (total 495 dwellings). Phase 1 nearing completion	Permitted (pre-CIL)	Underway
Longwater (Costessey)	6,660m ² major retail development for Next	Completed	Completed in 2015/16 and open
Easton	893 dwellings granted outline planning permission in autumn 2016, outline.	Permitted	2018/19

- 4.9 The South West includes four major growth locations in South Norfolk, Wymondham, Hethersett, Cringleford and Easton, plus Three Score (Bowthorpe) in Norwich. It also includes UEA (Norwich) and the strategic employment locations at Longwater, Hethel, Wymondham and Norwich Research Park.
- 4.10 Collectively the growth at Wymondham, Hethersett, Cringleford and the NRP is dependent on an improvement at the A11/A47 Thickthorn junction and public transport corridor enhancements. A major improvement at Thickthorn has been included as a commitment in the Government's Road Investment Strategy Investment Plan with delivery commencing in the period 2015-21.
- 4.11 Similarly, growth at Easton and Costessey is served by investment in the A1074 Dereham Rd public transport route and improvements at Longwater junction. The A47 Easton junction will be affected by proposed dualling of

the A47 between Easton and North Tuddenham which is also a commitment in the Road Investment Strategy Investment Plan.

Long Stratton

- 4.12 There is a long-standing desire for a bypass to be constructed to improve quality of life for existing residents. Moreover, the delivery of a bypass is a prerequisite for planned growth. The Long Stratton Area Action Plan, which includes the bypass and 1,800 homes (alongside other elements) was adopted in May 2016. In addition there have been ongoing pre-application discussions with potential developers promoting land for 1800 houses and the bypass. The bypass must be delivered by the 250th new dwelling (unless viability information demonstrates that a higher threshold is necessary and that the highways impacts of a higher figure would not be unacceptable). Development is expected to start in 2018/19.

Elsewhere in the Norwich Policy Area

- 4.13 In addition to the major growth locations, the JCS seeks additional commitment for about 3800 homes on smaller sites in the Broadland and South Norfolk parts of the Norwich Policy Area. These sites are identified through sites allocations documents, although many of the sites have already secured planning permission (due in part to the lack of a five-year land supply). Recent permissions have also included speculative applications taking advantage of the lack of five year housing supply. Local infrastructure enhancements may be required for these sites and secured through Section 106 legal agreements. Cumulative impacts of small sites are hard to predict and it is likely that improvements will be driven by the pressure on services and facilities. These do not appear in the short term but will be kept under review. These kind of developments are detrimental to the effective planning and timely delivery of infrastructure across Greater Norwich, and can contribute to delays in the delivery of planned growth on more “challenging” (but allocated) sites which may require higher levels of infrastructure (and which may also have higher levels of development risk).
- 4.14 Some of the larger sites, or particular concentrations of smaller sites, may influence decisions on strategic infrastructure:
- Development at Blofield and Brundall will benefit from some of the strategic infrastructure serving the north east quadrant.
 - Although of a smaller scale than in the north east and south west quadrants, significant concentrations of growth are planned in the north-west, on the Fakenham Road axis, and in the south east from the edges of the city centre out towards Poringland.

Table 5: other significant sites for early delivery:

Site/ Location	Development	Status	Expected start
Golf Course (Hellesdon)	Outline permission for up to 1,000 homes, including detailed proposals for the first phase of 110 dwellings, associated infrastructure including up to 2ha of land for a primary school site, 75sq m for D1 use (health facility) and up to 15.45ha for informal and formal open space plus off-site highway works	Permitted	2017/18
Hospital site (Hellesdon)	300 dwellings	Allocation	2018/19
Cator Lane / Hall Road (Drayton)	250 dwellings	Permitted	2018/19
Various Blofield / Brundall)	Over 400 dwellings	Permitted	Underway
Various Framingham Earl / Poringland	Approx. 840 dwellings remaining (total 994 dwellings)	Permitted	Underway
Long Stratton	1800 dwellings plus 9.5ha employment land and associated bypass	Emerging allocation	2017/18
Various Long Stratton/Tharston	170 dwellings	Permitted (pre-CIL)	Underway
Long Stratton/Tharston	2.5 ha employment land at Tharston Industrial Estate	Emerging allocation	2016/17

Outside the Norwich Policy Area

- 4.15 Outside the Norwich Policy Area the scale of planned growth is modest and currently is not identified to require anything other than development specific improvements likely to be secured through the planning process. Infrastructure requirements will be kept under review.

Greater Norwich Infrastructure Plan 2017

Appendix 1: Infrastructure Framework

Ref	District	Project/Scheme Description	Status	Total Estimated Project Cost (£,000)	Total Estimated Scheme Cost (£,000)	Contributory funding (£,000)	SOURCE	Funding need (£,000)	Spend profile £'000s								
									2017/18	2018/19	2019/20	2020/21	2021/22	2022/23	2023/24	2024/25	2025/26
T1	Broadland	MDR					DFT, £40m CIL		46,220	5,670	1,700						
T3	South Norfolk	Long Stratton Bypass inc. Hempnall Crossroads and town centre improvements		30,000	30,000	15,000	Developer	15,000	1,000	7,250	15,500	6,250					
T4	South Norfolk	Thickthorn	Scheme development				HA Capital	0					x	x			
T4.2	South Norfolk	Thickthorn park and ride expansion	Land secured from S106														
T5	South Norfolk	Longwater															
T5.1	South Norfolk	Longwater Scheme Development			2,000	2,000	LGF		500								
T5.2	Norwich South Norfolk	Green pedalway including Longwater pedestrian/cycle bridge			6,000			6,000		x	x	x					
T6	South Norfolk	Norwich Research Park expansion, B1108 and other transport improvements	NRP expansion permitted and under construction	13,000			Government grant, S106, NRP										
T7	Norwich	City Centre Measures															
T7.1	Norwich	POW Rd, Rose Lane, Ag Hall Plain	Design underway, implementation likely 2018/19				LGF/CIL		1,000	2,500	1,500						
T7.3	Norwich	Golden Ball Street / All Saints Green Scheme	Construction due to be complete May 2017		2,500		LGF/CIL		842								
T7.4	Norwich	Exchange Street closure															
tdb	Norwich	St George's Plain	Funds assumed to be supplied entirely by developer in association with St Georges Works	300		300	DEV	0			75	225					
tdb	Norwich	St Mary's Plain	If LEP funds diverted from Prince of Wales Road (tbc soon) then project can commence in 2017/18.	780		280	DEV/CIL	500		100	680						
tdb	Norwich	Tombland		1,750		0	CIL	1,750			1,000	1,000					
Also in G sheet	Norwich	East Norwich Gateway (formerly Whittingham bridges and links)	Probable that Norwich City Council will promote using LIF funding. However this is dependent upon funding feasibility work	tbc			Developers, LIF, CIL		1,000	100	x	x	x				
	Norwich	Green pedalway city to Barnard Rd					LGF / CIL			100	1,000	2,200					
T8	Broadland	Fakenham Road/Drayton High Road (including BRT and cycling)															
	Broadland Norwich	Fakenham Rd BRT Feasibility (Scheme Identification) - revenue			30	30		30									
T9	Norwich South Norfolk	Dereham Road Sustainable Transport Corridor (including BRT and cycling)															
T9.1	Norwich	Sweetbriar road/Guardian road/Dereham road- junction improvement	Approvals secured detailed design underway, construction due to commence Sept 2017		1,545	1,600			X	X							
T10	Broadland Norwich	Yarmouth Road Sustainable Transport Corridor (including BRT and cycling)		10,000													
T10.1	Broadland Norwich	Yarmouth Rd Sustainable Transport Corridor Scheme Identification (BRT/Green Pedalway)			20	20	LGF		20								
T10.2	Broadland Norwich	Phase 1 Delivery			tdb	tdb											
T10.3	Broadland Norwich	Phase 2 Delivery			tdb	1,000	S106										
T11	Broadland Norwich	Salhouse Rd Sustainable Transport Corridor (including BRT and cycling)															
	Broadland Norwich	Salhouse Rd Sustainable Transport Corridor Scheme Identification (BRT/Pink Pedalway)			30	30	NCC Revenue										
	Broadland Norwich	Salhouse Rd Corridor Scheme delivery Phase 1			400	400	LGF/CIL										
	Broadland Norwich	Salhouse Rd Corridor Scheme delivery Phase 2															
		St Clements Hill Toucan Crossing and associated works	Due to be constructed starting Jan 2018 using CCAG funding														
		School Lane/ Chartwell Road/ Denton Road Toucan Crossing and associated works (Blue Pedalway)	Project abandoned following feasibility study		120	120	CIL										
		Repton Avenue Feasibility			20	20	LGF										
T12	Broadland Norwich	A140 Sustainable Transport Corridor (including BRT and cycling)															
T12.1	Broadland Norwich	A140 Corridor scheme identification including analysis between City Centre and Harford (BRT/Yellow Pedalway)	Mouchel commissioned to undertake feasibility		60	60	LGF										
	Norwich	Airport Industrial Estate			4,100			4,100		x	x						
T13 and T14	Norwich South Norfolk	A11/B1172 Sustainable Transport Corridor (including BRT and cycling)		6,560													
T13 and T14	Norwich South Norfolk	A11 sustainable transport corridor scheme identification (BRT/Pink Pedalway)			60	60	NCC Revenue										
T13.1	Norwich South Norfolk	Roundhouse Way Bus Interchange	Under development, land issues slowing progress		500	500	CIL										
T13.2	Norwich South Norfolk	Eaton interchange	Due to start construction April 2017		100	100	CIL										
T14.1	Norwich South Norfolk	B1172 Bus/Cycle enhancements			250	250	LGF/CIL										
	Norwich South Norfolk	A11/ORR Daniels Road junction improvement and cycle lanes	Feasibility Work underway, due for construction starting summer 2018		2,000	2,000	LGF		200	800	1,000						
	Norwich South Norfolk	Newmarket Road / ORR & Leopold Road junctions	Feasibility Work underway, due for construction starting summer 2018		2,000	2,000	LGF		100	650	1,250						
	Norwich South Norfolk	Cycle link extension to Wymondham	Design work underway, due to start construction mid 2017		1,300	1,300	LGF		800	200							
	Norwich South Norfolk	Eaton Centre to Newmarket road south slip road cycle facilities	Due to start construction April 2017		300	300	LGF										
	Norwich South Norfolk	A11 north slip road to Cringleford cycle track	Due to start construction March 2017		50	50	LGF										
T15	Broadland	Growth Triangle Internal Link Road				14,350	Developer		2,350	4,850	-	-	-	-			
T15.1	Broadland	East West Link Road: BBP to Plumstead Rd	Delivered through development (BFLP)		6,000	6,000	S106/S278	-		3,000							
T15.2.1	Broadland	East West Link Road: Plumstead Road Junction and North Bound Spur	Scheme Development		400	400	LGF/CIL		x								
T15.2.2	Broadland	East West Link Road: Plumstead Rd to Salhouse Rd	Delivered through development (Land South of Salhouse Rd)		TBC		TBC	TBC		x	x						
T15.3	Broadland	East West Link Road: Salhouse Rd to Wroxham Rd	Delivered through development (WHF)		3,250	3,250	S106/S278	-	x								
T15.4	Broadland	East West Link Road: Wroxham Road to B1150	Delivered through development (NS&OC)		TBC		S106/S278	TBC				x	x				
T15.5	Broadland	East West Link Road: North Walsham Road to Buxton Road	Delivered through development (NS&OC). LIF bid agreed in principle		3,700	3,700	LIF - developer	3,700		1,850	1,850						
T15.6	Broadland	East West Link Road: Buxton Road to St Faiths Road	Delivered through development (NS&OC)		TBC		S106/S278	TBC		x							
T15.7	Broadland	East West Link Road: St Faith's Road to Airport Industrial Estate	Brief Agreed. Feasibility Underway		TBC	1,000	S106/S278/CIL	TBC		500	500						
T15.8	Broadland	Cycle Links Plumstead Road to Green Lane Crossing	Delivered through development (Land South of Salhouse Rd)		TBC		S106/S278	TBC		x							
T15.9	Broadland	Cycle Links Plumstead Road to Salhouse Road	Delivered through development (Land South of Salhouse Rd)		TBC		S106/S278	TBC		x	x						
T15.10	Broadland	Cycle Links NS&OC Wroxham Road junction to WHF Road Link Junction	Requires Project Brief / Feasibility		TBC		CIL /Other	TBC						x			

*Indicative timetable for delivery

Ref	District	Project/Scheme Description	Status	Total Estimated Project Cost (£,000)	Total Estimated Scheme Cost (£,000)	Contributory funding (£,000)	SOURCE	Funding need (£,000)	Spend profile £'000s									
									2017/18	2018/19	2019/20	2020/21	2021/22	2022/23	2023/24	2024/25	2025/26	
T16	South Norfolk	A140 south Sustainable Transport Corridor (including Core Bus Route and cycling)																
T12.1 (inc. above)	South Norfolk	A140 Corridor scheme identification including analysis between City Centre and Harford (BRT/Yellow Pedalway)	Mouchel commissioned to undertake feasibility		inc. above	inc. above	inc. above											
T16	South Norfolk	Bus priority Harford A47 Junction			1,750	1,750	LGF/CIL		100	1,100	450							
T19	Broadland	North Walsham Road Core Bus Route Enhancements																
T19.1	Broadland	North Walsham Road Core Bus Route Enhancements Scheme Identification			10	10	NCC Revenue											
T19.2	Broadland	North Walsham Road Core Bus Route Enhancements Delivery			tbd	tbd	Developer											
	Broadland	Re-routing of North Walsham Road	Delivered by NS & OC development				Developer		x	x								
T20	Broadland	Spixworth Rd Core Bus Route																
T20.1	Broadland	Spixworth Road Core Bus Route Enhancements - Feasibility			inc. above in 19.1	inc. above in 19.1	inc. above in 19.1											
T21	Broadland	Sprowston Rd Wroxham Rd Core Bus Route																
T21.1	Broadland	Sprowston Rd / Wroxham Rd Core Bus Route Enhancements - Feasibility							40									
T23	Broadland	Plumstead Rd Core Bus Route																
T23.1	Broadland	Plumstead Rd Core Bus Route Enhancements - Feasibility																
	Norwich South Norfolk	Bracondale and A146 Core Bus Route	Needs scheme development					S106										
T24	South Norfolk	Wymondham areas improvements						S106										
T24.1	South Norfolk	New subway/underpass at Wymondham Railway Bridge	Permitted					S106										
T24.2 (CF3-5 and GI P 5.3)	South Norfolk	Hethel sustainable access package	Needs scheme development					S106										
T31	Norwich South Norfolk	Pink Pedalway																
T14.2 (?)	Norwich South Norfolk	Pink Pedalway Route Extension (B1172)			250	250	LGF/CIL											
T31.1	Norwich	Salhouse Road (pink)	Brief issued, design work underway		365	365	CCAG/S106/LTP											
T31.4	South Norfolk	Pedestrian Cycle links along Colney Lane (pink)	Secured		250	250	S106											
T31.2	Broadland	Salhouse Rd Phase 2 to NDR (pink)	Initial Feasibility undertaken Oct 2010. Needs further scheme development alongside T11 as part of joint feasibility 2014/15					Rackheath PoD/CIL			x							
T37	Broadland	Purple Pedalway																
	Broadland	Wroxham Road / Cozens Hardy Road – Install Right Turn Filter Lanes	Needs scheme development					CIL	x									
		CCAG schemes																
	Norwich	Liberator Road	In progress	20		100	DfT, S106, Airport		34									
	Norwich	Spitfire Road - Hurricane Way	Issued	2		15	DfT		50									
	Norwich	Hurricane Way - Heyford Road		50		50	S106		0									
	Norwich	Taylor's Lane (connector)	In progress	3		14	S106		0	17								
	Norwich	Fifers Lane / Ives Road / Heyford Road roundabout	Issued	300		300	DfT		0									
	Norwich	Bussey Road - Ives Road	Issued	0		30	DfT		0									
	Norwich	Mill Cross Lane (Fiddlewood - Catton Grove Road)	Issued	95		500	DfT, S106		310									
	Norwich	Woodcock Rd / Catton Grove Rd roundabout	Issued	300		300	DfT		0									
	Norwich	Shipstone Rd / Angel Rd / Waterloo Rd junc including Angel Road Scheme	Issued	310		320	DfT		292									
	Norwich	Edward Street north		200		200	DfT		300									
	Norwich	St Crispins (St Georges - Botolph Street) Crossing	Issued	160		900	DfT		779									
	Norwich	All Saints Green / Brazengate / Queens Road	Issued	61		550	DfT		462									
	Norwich	Lakenham Way	Issued	400		410	DfT		0									
	Norwich	Hall Road (Bessemer - Old Hall Road)	Issued	350		350	DfT, S106		0									
	Norwich	Ipswich Road - Old Hall Road	Issued	25		25	DfT		0									
	Norwich	20 mph areas (Yellow and Blue)		300		300	DfT		250									
	Norwich	Cycle parking at hubs (yellow)	Issued	17		117	DfT		0									
	Norwich	Wayfinding and clutter reduction (yellow)		30		30	DfT		0									
	Norwich	Monitoring infrastructure (yellow and blue)	Issued	40		40	DfT		0									
	Norwich	Bluebell Road (connector)	Issued	84		320	DfT		259									
	Norwich	Newmarket Road (Unthank Road - ORR) path upgrade	Issued	300		300	DfT		0									
	Norwich	Newmarket Rd (ORR - Hannover Rd)	Issued	491		800	DfT		668									
	Norwich	Magdalen Road	Issued	250		250	DfT		0									
	Norwich	St Clement's Hill (entrance to Sewell Park College)	Issued	100		100	DfT		0									
	Norwich	Chartwell Road / St Clements Hill / Spixworth Road	Issued	85		400	DfT, CIL		0									
	Norwich	Denton Road	Issued	24		120	CIL		0									
	Norwich	North Walsham Road (George Hill - edge of urban area)		500		500	DfT		900									
	Norwich	20 mph areas (city centre)	Issued	300		300	DfT		250									
	Norwich	Wayfinding and clutter reduction (blue)		40		40	DfT		0									
	Norwich	St George's Street / Colegate junction (on both routes)	Issued	125		125	DfT		0									
	Norwich	City centre access strategy for cyclists	Issued	230		250	DfT		280									
On site and direct mitigation development transport projects																		
(GI NFS 1.6)	Norwich	Deal Ground supporting infrastructure			3,480	3,480	Developer											
	South Norfolk	South Wymondham supporting infrastructure			3,500	3,500	Developer											
		Aeropark infrastructure					Developer											
(EDU2)	Broadland	Improvements to A1042/B1150 Junction & B1150/George Hill Junction	Delivered by NS & OC development							x	x							
(EDU21)	Broadland	Junction Improvements Cucumber Lane Brundall	Delivered by development BDC NPA Small site					S106 / S278										
	Broadland	Junction Improvement, Road Narrowing and speed restriction Yarmouth Road dev Brundall	Delivered by development BDC NPA Small site					S106 / S278										
	Broadland	Bus Route Phase 1 Link Road 1 to Blue Boar Lane	Delivered by WHF Scheme					S106	x									
	Broadland	Junction Improvements Gordon Avenue / Harvey Lane + 20mph Speed Limit on Henby Way	Delivered by PB&GL Scheme					S106 / S278										
(EDU14)	Broadland	Junction Improvements in the Form of a Mini-Roundabout at Yarmouth Road / Griffin Lane	Delivered by PB&GL Scheme					S106 / S278										
(EDU23)	Broadland	Road Widening to Increase south-bound Junction Capacity of NDR Junction with Salhouse Road	Expected to be delivered by development North of Rackheath Village					S106 / S278				x						
	Broadland	Road Widening to Increase south-bound Junction Capacity of NDR Junction with Wroxham Road	Expected to be delivered by development North of Rackheath Village					S106 / S278						x				
	Broadland	Blue Boar Lane Neighbourhood Cycle Link Improvement	Required to support WHF development					S106/S278	x									
	Norwich	Fifers Lane - Stirling Road bus/cycle link	Design required as part of site development	50	50	50	S106											

*Indicative timetable for delivery

Ref	District	Project/Scheme Description	Status	Total Estimated Project Cost (£,000)	Total Estimated Scheme Cost (£,000)	Contributory funding (£,000)	SOURCE	Funding need (£,000)	Spend profile £'000s								
									2017/18	2018/19	2019/20	2020/21	2021/22	2022/23	2023/24	2024/25	2025/26
	Norwich	Mile Cross Road/ Waterworks Road junction upgrade	Future signal upgrade scheme	350				350									
	Norwich	Grapes Hill cycle / foot bridge – replacement to increase capacity	Does not currently have any NATS status	1,500					x								
	Norwich	Traffic issues at Waterworks and Hellesdon Roads, Larkman Lane junction with Dereham Road	Not a current priority	tbd		tbd	CIL strategic	tbd									
	Norwich	Britannia Rd traffic issues	Design underway	20		20	CIL n'hood	0									
(GI NFN.5)	South Norfolk	Hethersett Link Road	Delivered by development				S106										

*Indicative timetable for delivery

Ref	District	Project/Scheme Description	GI Priority Area	Status	Total Estimated Scheme Cost	Contributory funding (£,000)	SOURCE	Funding need (£,000)	Spend profile £'000													
									2017/18	2018/19	2019/20	2020/21	2021/22	2022/23	2023/24	2024/25	2025/26					
Projects promoted in the Draft 5 year Investment Plan for Delivery in 2017/18																						
	South Norfolk	Improved Connectivity - Costessey Circular Walks	Marriott's Way		6	HLF bid for £3k successful - CIL funding need reduced to £3k	CIL / other	3	6													
	Broadland	Thorpe Ridge - Protection and enhancement of woodlands and provision of public access; Feasibility Study	Thorpe Ridge to The Broads via North Burlingham	Brief written for feasibility work 15/16			Promoter	0	5													
	South Norfolk	Cringleford N & N Strategic Connections	Norwich Fringe South	Ready to commence delivery	68	£9,750 S106 available	CIL / S106	58	10	58												
	Norwich	Riverside walk accessibility improvements	Norwich - Wensum Parkway	Emerging from Wensum Strategy work	200		CIL	200	20	180												
GI P5.7	South Norfolk	Wymondham -Protection and enhancement of the Lizard and Silfield Nature Reserve	Wymondham GI	Requires Project Brief / Feasibility	40		CIL	40	40													
	Broadland	Thorpe Marriott to Costessey	Marriott's Way	Ready to commence Delivery	100		CIL / other	100	100													
GI P7.1.6	Norwich	Sloughbottom Park – Andersons Meadow section improvements (path widening, tree works, drainage works and landscaping)	Marriott's Way	Ready to commence Delivery	250		CIL /other	250	150	100												
GI P9.4.14	Broadland	Strumpshaw Pit Circular Walk	East Broadland GI	Project Development	60	approx. £25k S106 from Strumpshaw development	CIL/S106	35		35												
GI P7.1.4	Norwich	Barn Road Gateway	Marriott's Way	Ready to commence Delivery preferable in 18/19 to allow related HLF works in 17/18	40		CIL / other	40		40												
GI P1.3.1	Broadland	Broadland Way - Green Lane North to Plumstead Road	Norwich to The Broads (Mousehold Heath through the NEG T to the Broads)	Phase 2 of Broadland Way	150		CIL	150		150												
	Norwich	Riverside walk: Eye Bridge to Whitefriars	Norwich - Wensum Parkway	Emerging from Wensum Strategy work			CIL			160												
Projects coming forward for Delivery in future years																						
	Norwich	Mile Cross Cycle and Pedestrian Links		Moved from Transport Tab	100		CIL neighbourhood	75	25		75											
GI N.1.2	Norwich	Riverside Walk Missing Link Duke St to St George's St	Norwich - Wensum Parkway	Feasibility	300		CIL / Other	300			300											
GI NFS 1.6.1	Norwich South Norfolk	East Norwich Gateway (previously Norwich Crossing & Bridges – Whitlingham (Phase 1 & 2))	Norwich Fringe South	Feasibility and Design work required 17/18 and 18/19	1,000		CIL/Developer	1,000			x	x	x									
GI NFS 1.7	Norwich	UEA to Eaton Boardwalk extension	Norwich Fringe South	Requires Project Brief / Feasibility.	100		potentially developer funded/CIL	100		100												
GI NFS.1.3	South Norfolk	Yare Valley: Lodge Farm to Bawburgh Lakes connection	Norwich Fringe South	Requires feasibility and scheme development	210	£24,750 S106 from Lodge Farm	S106/CIL	185		210												
GI NFS.2	Norwich	Yare and Wensum Valleys Link (Norwich, Broadland and SNDC)	Norwich Fringe South	Needs scheme development	229	S106 - Query against Bunkers Hill project	CIL, S106 Bunkers Hill £59k	170		59	75	95										
GI NFS.4.17	Norwich	Chapel Break allotments	Norwich Fringe South	Bowthorpe Open Space investment plan - Design required	121	PREVIOUSLY listed as City Council Capital Programme	Nbhd CIL	0		0												
	Norwich	20 Acre Wood	Norwich Fringe South	Project Delivery	90	£10,000 Nbhd CIL,	Nbhd CIL	80		90												
GI P1.1.2	Broadland	Enhancement of Newman Woods	Norwich to The Broads (Mousehold Heath through the NEG T to the Broads)	Part-delivered. Further elements being worked up	tbc		£50k Rackheath POD funding (£26,125 remaining)				x											
GI P4.2	South Norfolk	Long Stratton Green Infrastructure Project Plan	Tas Valley	Project Delivery	10	£10,000 S106 from Tharston	S106	0		x												
GI P5.6	South Norfolk	Wymondham - Tuttle Lane enhancements Phase 1	South West	Feasibility and initial project establishment costs	30		CIL	30				10	10	10								
GI P8.1	Broadland	North West Norwich Forest Connections including Drayton and Thorpe Marriott	North West Forest and Heath	Feasibility Study			CIL/other															
GI P8.1.1	Broadland	Hellesdon to Drayton Greenway	North-west Forest & Heaths and Marriotts Way & the Wensum	Phase 1 Feasibility & Design Phase2 Delivery	105	S106 ?	Cil / S106	105	0	35	35	35										
GI P8.1.2	Broadland	Drayton to Horsford Greenway	North-west Forest & Heaths and Marriotts Way & the Wensum	Phase 1 Feasibility & Design Phase2 Delivery	105	S106 ?	CIL/S106	105	0	35	35	35										
GI P8.1.3	Broadland	Thorpe Marriott Greenway	North-west Forest & Heaths and Marriotts Way & the Wensum	Phase 1 Feasibility & Design Phase2 Delivery	105	S106 ?	CIL/S106	105	0	35	35	35										
GI P9.1	Broadland	Improvement to walking in the NE; in relation to NDR	GNGB Primary Linkage corridor: East Broadland GI	Requires project brief / feasibility			CIL				x	X										
GI P9.2.2	Broadland	Brundall to NEG T Connection	GNGB Primary Linkage corridor: East Broadland GI	Feasibility	5		Promoter				5											
GI P9.3	Broadland	Bure Valley Blue Way	GNGB Primary Linkage corridor: East Broadland GI	Requires project brief / feasibility			CIL					X										
GI P9.4.1	Broadland	Acle Lands Trust Woodlands Access and Connectivity Project	East Broadland GI	Project Development	180		CIL	180			180											
GI P 9.4.2	Broadland	Burlingham Trails Cycling and Walking Routes	East Broadland GI	Project Development	180		CIL	180			100	80										
GI P 9.4.3	Broadland	Burlingham Trails Attractions and Facilities Project	East Broadland GI	Project Development	240		CIL	240				80	80	80								
GI P 9.4.4	Broadland	Long Distance Cycle Loop	East Broadland GI	Project Development	75		CIL	75			75											
GI P 9.4.5	Broadland	A47 Safe Foot and Cycle Crossing	East Broadland GI	Project Development	725,000 – 1,265,000		CIL	725,000 – 1,265,000			725,000 – 1,265,000	4 years	4 years	4 years								
GI P 9.4.6	Broadland	Local walking circulars with links to pubs, restaurants and cafes	East Broadland GI	Project Development	35		CIL	35					35									
GI P 9.4.7	Broadland	Link from Blofield to Blofield Heath	East Broadland GI	Project Development	125		CIL	125				125										
GI P9.4.8	Broadland	Cremer's Meadow, Brundall	East Broadland GI	Project Development	25		CIL / NBhd	25		25												
GI P 9.4.9	Broadland	Witton Run	East Broadland GI	Phase 1 Feasibility & Design Phase2 Delivery	170	S106?	CIL	170	x		170	x	x	x								

* Indicative timetable for delivery

Ref	District	Project/Scheme Description	GI Priority Area	Status	Total Estimated Scheme Cost	Contributory funding (£,000)	SOURCE	Funding need (£,000)	Spend profile £'000								
									2017/18	2018/19	2019/20	2020/21	2021/22	2022/23	2023/24	2024/25	2025/26
GI P9.4.10	Broadland	Great Plumstead Open Space / Community Orchard	East Broadland GI	Project Development	25	0	CIL	25			25						
GI P9.4.11	Broadland	South Walsham GI Project	East Broadland GI	Project Development	150		CIL	150			150						
GI P9.4.12	Broadland	West Brundall GI Project	East Broadland GI	Project Development	425		CIL	425			75	350					
GI P9.4.13	Broadland	South East Lingwood GI Connectivity	East Broadland GI	Project Development	25		CIL	25			25						
GI S.1	Broadland	Brundall to Acle Green Network	GNGB Secondary Corridors	Requires project brief / feasibility			CIL					X					
GI S.2	Broadland	Lenwade to Hevingham Secondary Corridor	GNGB Secondary Corridors	Requires project brief / feasibility			CIL					X					
GI S.3	Broadland	Haveringland to Cawston Secondary Corridor	GNGB Secondary Corridors	Requires project brief / feasibility			CIL					X					
GI S.4	Broadland	Broadland East to West Secondary Corridor Via Marsham	GNGB Secondary Corridors	Requires project brief / feasibility			CIL					X					
GI S.5	Broadland	Buxton Heath to Aylsham Secondary Corridor	GNGB Secondary Corridors	Requires project brief / feasibility			CIL					X					
GI S.6	Broadland	Hevingham to Thorpe Marriott Secondary Corridor	GNGB Secondary Corridors	Requires project brief / feasibility			CIL					X					
GI S.7	Broadland	Catton Park to Spixworth Secondary Corridor	GNGB Secondary Corridors	Requires project brief / feasibility			CIL					X					
GI S.8	Broadland	Beeston Park to Spixworth Secondary Corridor	GNGB Secondary Corridors	Requires project brief / feasibility			CIL					X					
GI S.9	Broadland	Thorpe Woodlands to Broadwalk Plantation Secondary Corridor	GNGB Secondary Corridors	Requires project brief / feasibility			CIL					X					
GI S.10	Broadland	Thorpe Woodlands to Dobbs Beck (Via Harrisons Plantation) Secondary Corridor	GNGB Secondary Corridors	Requires project brief / feasibility			CIL					X					
GI S.11	Broadland	Thorpe Woodlands to Dobbs Beck (via Rackheath Park) Secondary Corridor	GNGB Secondary Corridors	Requires project brief / feasibility			CIL					X					
GI S.12	Broadland	Thorpe Woodlands to Witton Run Secondary Corridor	GNGB Secondary Corridors	Requires project brief / feasibility			CIL					X					
GI S.13	Broadland	Thorpe Woodlands to Smee Lane Secondary Corridor	GNGB Secondary Corridors	Requires project brief / feasibility			CIL					X					
	Broadland	South Walsham Fen Access	East Broadland GI		35		CIL	35			35						
	South Norfolk	Boudicca Way: Access for all	GNGB Secondary Corridors	Project Development			CIL			x							
	South Norfolk	Boudicca Way cycle route	GNGB Secondary Corridors	Preliminary design work	23	includes 15% management cost	CIL	23			20	3					
	South Norfolk	Boudicca Way links to development	GNGB Secondary Corridors	Preliminary design work	17	includes 15% management cost	CIL	17			15	2					
	Area-wide	MW: Biodiversity Management with Community Engagement	Marriott's Way and the Wensum	Ready to commence delivery	160	£4k secured from Norwich Fringe Project, £15k HLF confirmed, £30k sought from Nfk Biodiversity Partnership	CIL / Other	101		45	28	29	29	29			
	Norwich	MW: Inner Ring Road crossing	Marriott's Way and the Wensum		250		CIL / other	250		40	210						
	Broadland South Norfolk	MW: Signage to Link Marriott's Way to the Adjacent Communities	Marriott's Way and the Wensum		20	HLF bid for £10k	CIL / other	10		20							
	Norwich	MW: Hellesdon Station Area	Marriott's Way and the Wensum		210		CIL / other	210			105	105					
	Broadland	MW: Aylsham Gateway	Marriott's Way and the Wensum		30		CIL / other	30			30						
	Broadland	MW: Surfacing Works (Tesco's)	Marriott's Way and the Wensum		85	Tesco Bags of Help scheme being explored	CIL / other	85k estimate		85							
	South Norfolk	MW: Trim Track - Costessey	Marriott's Way and the Wensum		10		CIL	10				10					
	Broadland South Norfolk	MW: Crossing Points Improvement Project	Marriott's Way and the Wensum		89	HLF bid for £10k	CIL / other	79		89							
	Broadland	MW: Reepham surfacing and biodiversity	Marriott's Way and the Wensum		100		CIL / other	100				100					
	Broadland	MW: Crossing over Taverham Road in Drayton	Marriott's Way and the Wensum		100		CIL / other	100				100					
	Broadland Norwich	MW: Walking and Cycling Link to the Red Pedalways Route from the Proposed Royal Norwich Golf Club Development – Feasibility Plan	Marriott's Way and the Wensum	Feasibility - £20k			CIL / other						x	x			
	Norwich	Bishops Bridge to Whitefriars	Norwich - Wensum Parkway	Emerging from Wensum Strategy work	50		CIL / Other	50				50					
	Norwich	Carrow Bridge to Ber Street Woodland (Previously Boom Towers)	Norwich - Wensum Parkway	Emerging from Wensum Strategy work	750	HLF to be explored	CIL / HLF	750				375	375				
	Norwich	Marriott's Way & Wensum Riverside Walk Accessible Circular Walk 1; Train Wood	Marriott's Way and the Wensum		57		CIL	57				57					
	Norwich	Marriott's Way & Wensum Riverside Walk Accessible Circular Walk 2; Wensum Local Nature Reserves	Marriott's Way and the Wensum		60		CIL	60					60				
	Norwich	Riverside Walk missing link Sweetbriar Road	Norwich - Wensum Parkway	feasibility required	tbc		CIL/other	x				x					
	Norwich	Riverside Walk Improvements: Mile Cross Road to Dolphin Bridge	Norwich - Wensum Parkway	feasibility required	tbc		CIL/other	x				x					
	Norwich	Riverside Walk Improvements: Wensum Park Access Improvements	Norwich - Wensum Parkway	feasibility required	tbc		CIL/other	x				x					
	Norwich	Riverside Walk Improvements: Hellesdon Road to Marriott's Way	Norwich - Wensum Parkway	feasibility required	tbc		CIL/other	x				x					
	Norwich	Riverside Walk Improvements: environmental improvements south of Swanton Road	Norwich - Wensum Parkway	feasibility required	tbc		CIL/other	x				x					
	Norwich	Riverside Walk Improvements: Mile Cross Road to Dragon Crossing	Norwich - Wensum Parkway	feasibility required	tbc		CIL/other	x				x					
	Norwich	Riverside Walk Improvements: Dolphin Dyke and Boot Binders Road	Norwich - Wensum Parkway	feasibility required	tbc		CIL/other	x				x					
	Norwich	Earlham Millennium Green Improvement Project: Phase 3	Norwich Fringe South		25		Nbhd CIL	25		25							
	South Norfolk	Kett's Country Trail	South West	Project Development	97	includes 15% management cost	CIL	97			85	12					
	Norwich	Kett's Heights	Thorpe Ridge - Norwich link	10k Neighbourhood CIL in 16/17	150		Nbhd CIL, £90K HLF funding	50		50							
	South Norfolk	Wherryman's Way : Chedgrave Disabled Access Path	Yare Valley (Norwich to Yarmouth)	Project Delivery	75		CIL	75		75							
	South Norfolk	Wherryman's Way: Strategic Link at Reedham	Yare Valley (Norwich to Yarmouth)	Project Delivery	35		CIL	35		35							
	South Norfolk	Wherryman's Way : Yare Valley Cycle Route	Yare Valley (Norwich to Yarmouth)	Project Delivery	23	includes 15% management cost	CIL	23		20	3						

* Indicative timetable for delivery

Ref	District	Project/Scheme Description	GI Priority Area	Status	Total Estimated Scheme Cost	Contributory funding (£,000)	SOURCE	Funding need (£,000)	Spend profile £'000													
									2017/18	2018/19	2019/20	2020/21	2021/22	2022/23	2023/24	2024/25	2025/26					
Projects expected to be delivered by development																						
GI P1.7	Broadland	North Sprowston and Old Catton GI Linkages - Focus on Church Lane	Norwich to The Broads (Mousehold Heath through the NEG T to the Broads)	Requires Project Brief			Dev (Beyond Green)						x									
GI P2.1.2	Broadland Norwich	Tree planting & management of existing street, garden, boundary and woodland trees for ecological connectivity	Thorpe Ridge to The Broads via North Burlingham	Feasibility required			Delivered by development	0	x	x	x	x	x									
GI P1.1.3	Broadland	North-South GI Connectivity NE Rackheath	Norwich to The Broads (Mousehold Heath through the NEG T to the Broads)	Requires Feasibility			S106	0				x	x	x								
GI NFS.4.12	Norwich	Threescore Development: Bowthorpe Historic Parkland	Norwich Fringe South	Bowthorpe Open Space investment plan - Design required	94		S106	0														
GI NFS.4.13	Norwich	Threescore Development: The Runnel	Norwich Fringe South	Bowthorpe Open Space investment plan - Design required	269		S106	0														
GI NFS.4.14	Norwich	Threescore Development: Bowthorpe Southern Park	Norwich Fringe South	Bowthorpe Open Space investment plan - Design required	81		S106	0														
GI NFS.4.20	Norwich	Bowthorpe and Earlham marshes paths	Norwich Fringe South	Bowthorpe Open Space investment plan - Design required	67		S106	0				0										
GI NFS.4.21	Norwich	Yare Valley path northern extension	Norwich Fringe South	Bowthorpe Open Space investment plan - Design required	91		S106	0				0										
GI NFS.5	South Norfolk	Queens Hill Country Park	Norwich Fringe South	Permitted - SNC taking on management imminently. Feasibility project to connect to Marriotts Way			S106	0														
GI NFS.5.1	South Norfolk	Marriott's Way to Queens Hill Cycle connection	Norwich Fringe South		120	Queens Hill Travel Plan S106	S106	0				0										
GI NFS.7.1 (NP 2.1)	South Norfolk	Cringleford Landscape Protection Zone (ENV1 of Neighbourhood Plan)	Norwich Fringe South	Delivered by Development			S106	0														
GI NFS.7.2 (NP 2.1)	South Norfolk	Cringleford Gateway Tree Belt (ENV2 of Neighbourhood Plan)	Norwich Fringe South	Delivered by Development			S106	0														
GI NFS.7.3 (NP 2.1.4 and GI NFS 3.1)	South Norfolk	Cringleford Walking and Cycling (SCC3 of Neighbourhood Plan)	Norwich Fringe South	Delivered by Development (linked with NFS 3.1)			S106	0														
GI F.	South Norfolk	Footpath/cycleway Hethersett Lane to A47	Norwich Fringe South	Project Development	50	£1.3m S106 from NNUH	S106	0				50										
GI P1.2	Broadland	North Rackheath Park – Broads Buffer Zone	Norwich to The Broads (Mousehold Heath through the NEG T to the Broads)	delivered by development			S106	0														
GI P1.3.2	Broadland	Three Rivers Way; Connection to Broadland Way/Norwich Cycle Network	Norwich to The Broads (Mousehold Heath through the NEG T to the Broads)	Three Rivers Way funded. Funding required for connection to Broadland Way/Norwich Cycle Network			CIL	0														
GI P1.4	Broadland	Sprowston Manor Golf Course - Retention and protection of bat roosts	Norwich to The Broads (Mousehold Heath through the NEG T to the Broads)	Mainly protection; Requires Project Brief			DEV	0			0											
GI P1.7	Broadland	North Sprowston and Old Catton GI Linkages - Focus on Church Lane	Norwich to The Broads (Mousehold Heath through the NEG T to the Broads)	Requires Project Brief			Dev (Beeston Park)	0	0	0		0	0	0	0	0	0	0	0	0		
GI P1.9 (BDC ref GI S 10.1)	Broadland	Enhancements habitat connectivity Racecourse Plantation to Harrison Plantation	Norwich to The Broads (Mousehold Heath through the NEG T to the Broads)	Requires Project Brief / Feasibility			S106	0	0	0	0	0										
GI P1.10 (BDC ref GI S 11.1)	Broadland	Parkland NE of Thorpe End	Norwich to The Broads (Mousehold Heath through the NEG T to the Broads)	Requires Project Brief / Feasibility			S106	0	0	0	0	0										
GI P2.1.1	Broadland	Management of Weston Wood (Ancient Woodland). Pinebanks/Griffin Lane GI and Woodland Management Plans.	Thorpe Ridge to The Broads via North Burlingham	Ancient Woodland Management Plan to be produced and implemented on Pinebanks site secured through the grant of planning permission.			S106	0	0													
GI P2.2	Broadland	Thorpe Woodlands - protection of wildlife interest & Connectivity (E Norwich Community Woodlands)	Thorpe Ridge to The Broads via North Burlingham	Through LP policy				0														
GI P9.2.3 (BDC ref GI S 12.3)	Broadland	Landscaping of Green Lane East and Brook Farm Road Links	GNGB Primary Linkage corridor: East Broadland GI	To be delivered by development			Dev	0	0													
GI P9.2.4 (BDC ref GI S 12.4)	Broadland	Landscaping of Middle Road, Gt & Lt Plumstead	GNGB Primary Linkage corridor: East Broadland GI	Delivered by development (NDR / Brook & Laurel Farm)			Dev	0	0													
GI P9.2.5 (BDC ref GI S 13.1)	Broadland	Enhanced landscaping alongside Green Lane and Smee Lane	GNGB Primary Linkage corridor: East Broadland GI	Delivered by development (NDR / Brook & Laurel Farm / AAP Allocation GT11)			Dev	0														
GI P9.2.6 (BDC ref GI S 12.1)	Broadland	Informal Open Space south west of Thorpe End	GNGB Primary Linkage corridor: East Broadland GI	Delivered by development (NDR / Brook & Laurel Farm)				0														
GI P9.2.7 (BDC Ref GI S13.2)	Broadland	North-South GI Connectivity Gt & Little Plumstead/Postwick: Thorpe Woodlands to Smee Lane	GNGB Primary Linkage corridor: East Broadland GI	Delivered by development (NDR / Brook & Laurel Farm / AAP Allocation GT11)				0														
GI NDR 1 (BDC Ref GI S.7.2, and T1)	Broadland	NDR Mitigation (Culvert north of Redhall Farm)	NDR MITIGATION	Delivered by NDR				0	0													

* Indicative timetable for delivery

Ref	District	Project/Scheme Description	GI Priority Area	Status	Total Estimated Scheme Cost	Contributory funding (£,000)	SOURCE	Funding need (£,000)	Spend profile £'000								
									2017/18	2018/19	2019/20	2020/21	2021/22	2022/23	2023/24	2024/25	2025/26
GI NDR 2 (BDC Ref GI S.9.1 and T1)	Broadland	NDR Mitigation (Bat gantry and Culvert north of Garden Plantation)	NDR MITIGATION	Delivered by NDR				0	0								
GI NDR 3 (BDC Ref GI S.11.2 and T1)	Broadland	NDR Mitigation (Culvert and new tree belt north of Sprowston Wood)	NDR MITIGATION	Delivered by NDR				0	0								
GI NDR 4 (BDC Ref GI S.12.5 and T1)	Broadland	NDR Mitigation (Bat Gantry, Culvert and Brown Bridge NDR Middle Road Crossing)	NDR MITIGATION	Delivered by NDR				0	0								
GI NDR 5 (BDC Ref GI S.13.3 and T1)	Broadland	NDR Mitigation (Bat Gantry and Culvert at Smea Lane)	NDR MITIGATION	Delivered by NDR				0	0								
NOTE		OTHER NDR MITIGATION TO FOLLOW (LIST NEEDS TO BE COMPILED)	NDR MITIGATION					0	0								
GI P5.4	South Norfolk	Wymondham GI Evidence and Project Plan	South West	Delivered by Development		£1400 S106 Right Up Lane, £50 per dwelling S Wymondham	S106	0	0								
GI NFN.2	Broadland	Orbital Cycle Route - NEG T to Norwich Airport	Norwich Fringe North	Delivered by Development			S106/S278/CIL	0									
GI NFN.5	Broadland	Delivery of Open Space inc. Play Space and Sports Pitches - North East Norwich	Norwich Fringe North	Delivered by Development			S106	0									
GI NFN.5.1 BDC ref GI.S.8.1	Broadland	Delivery of Sport Pitches, Children's Play and Informal Open Space at White House Farm	Norwich Fringe North	Delivered by Development			S106	0									
GI NFN.5.2	Broadland	Delivery of Sport Pitches, Children's Play and Informal Open Space at Beeston Park	Norwich Fringe North	Delivered by Development			Dev	0									
GI NFN.5.3	Broadland	Delivery of Sport Pitches, Children's Play and Informal Open Space at Brook Farm	Norwich Fringe North	Delivered by Development				0									
GI NFN 5.4	Broadland	Delivery of Sport Pitches, Children's Play and Informal Open Space at Land East of Buxton Road	Norwich Fringe North	delivered by development			S106	0									
GI NFN.5.5	Broadland	Delivery of Sport Pitches, Children's Play and Informal Open Space at Pinebanks and Griffin Lane	Norwich Fringe North	delivered by development			S106	0									
GI NFN 6.1	Broadland	Canhams Hill open space/GI provision as part of proposed development with opportunities to maintain and enhance the green space between Hellesdon and Drayton at Canhams Hill CWS. Included in feasibility study For Drayton & NW Forest & Heaths	Norwich Fringe North	Potentially Delivered by Development; Part of Feasibility Study For Drayton & NW Forest & Heaths			Dev	0									
GI NFN 7 BDC REF GI S7.1	Broadland	North-South GI Connectivity: Catton, Sprowston Spixworth	Norwich Fringe North	To be delivered through development				0									
GI NFN 8 BDC Ref GI S10.2	Broadland	West-East GI Connectivity: Catton, Sprowston Spixworth	Norwich Fringe North	To be delivered through development				0									

* Indicative timetable for delivery

Ref	District	Project/Scheme Description	Status	Total Estimated Project Cost (£,000)	Contributory funding and		CIL to fund	To fund from other sources	Spend profile £'000s										
					S106	Basic Need			to date	2017/18	2018/19	2019/20	2020/21	2021/22	2022/23	2023/24	2024/25	2025/26	
	South Norfolk	Roydon Primary Extension to 420	Growth in Roydon/Diss area requires extension to 420	3,900	3,694			206	3,000	900									
EDU1/2	Broadland	Blue Boar Lane New Free School 420 Primary	Design stage and land transfer underway	6,400	4,300	2,100		0	3,840	2,560									
S106	South Norfolk	Trowse New 210 Primary	Design underway. Discussion with developer about construction access	4,300	1,100	3,200		0	2,580	1,720									
EDU21/S106	South Norfolk	Hethersett New 420 Primary	Design stage underway	6,400	4,500	1,900		0	1,280	2,560	2,560								
EDU11	Norwich	Norwich New Primary 420	Discussions with Norwich CC - possible Free School	6,400					820	1,640	1,640								
	Norwich	New Bowthorpe Primary School																	
	South Norfolk	Hethersett Junior reorganisation	Brief to be drafted					0											
S106	South Norfolk	Wymondham High Extension	Next phase of masterplan underway	10,000	10,000			0	2,000	2,000	3,000	3,000							
EDU14/S106	South Norfolk	Wymondham New 420 Primary	Design stage underway	6,400	5,100	0		1,300		1,280	2,560	2,560							
EDU7/8?	South Norfolk	Costessey New 210 Primary	Possible extension to existing Academy. Land transfer/ purchase underway	4,500	790	0		3,710		900	1,800	1,800							
		Mulbarton infant/junior expansion to 3FE	Masterplan complete. Likely to be in 17/18 capital programme	4,150						X	X	X							
	Broadland	Little Plumstead Primary Extension to 315/420		4,500	400			3,750		500	400	1,800	1,800						
S106 (NP 2.1.2)	South Norfolk	Hethersett High Extension	Masterplan review underway	5,000	1,754		3,246	0		500	500	2,000	2,000						
	Broadland	Hellesdon New 420 Primary		6,400	0	0	6,400				500		780	2,560	2,560				
EDU22	South Norfolk	Easton Primary Extension to 420	Awaiting further housing growth for permanent capital project	2,500	0	0	2,500					1,250	1,250						
	South Norfolk	Hingham Primary Mobile Replacement		900			221	679				450	450						
EDU18 (NP 2.1.2)	South Norfolk	Cringleford New 420 Primary		6,400	0	0	6,400					1,280	2,560	2,560					
EDU25	South Norfolk	Long Stratton New 420 Primary		6,400	0	0	6,400					1,280	2,560	2,560					
EDU7 (9?)	Broadland	North Norwich New Secondary and existing schools	Site search commissioned for high school/all through schools 4-18	26,000	0	0	26,000					2,600	2,600	2,600	2,600	7,800	7,800		
	Broadland	Blofield New 420 Primary	On hold. New site required	6,400								X	X	X					
EDU5	Broadland	Beeston Park New Free School 420 Primary #1		6,400	0	0	0	6,400				1,280	2,560	2,560					
EDU1/2	Broadland	South of Salhouse Road New 420 Primary	Resolved to approve	6,400	0	0	6,400					1,280	2,560	2,560					
EDU6	Broadland	Beeston Park New Free School 420 Primary #2		6,400	0	0	0	6,400						1,280	2,560	2,560			
EDU1/2	Broadland	Rackheath New 420 Primary #1		6,400	0	0	6,400								1,280	2,560	2,560		
EDU1/2	Broadland	Rackheath New 420 Primary #2		6,400	0	0	6,400								1,280	2,560	2,560		
EDU1/2	Broadland	Land East of Broadland Business Park New 420 Primary		6,400	0	0	6,400								1,280	2,560	2,560		

*Indicative timetable for delivery

Ref	District	Project/Scheme Description	Status	Total Estimated Project Cost	Contributory funding (£,000)	SOURCE	Funding need	Spend Profile £'000s								
								2016/17	2017/18	2018/19	2019/20	2020/21	2021/22	2022/23	2023/24	2024/25
Community Facilities																
CF1.2	Broadland	Brook & Laurel Farm Community Building	Requires Project Brief / Feasibility	500	100	S106/CIL	400					500				
CF1.3	Broadland	North Sprowston & Old Catton Community Space including library	Requires Project Brief / Feasibility	2,400	0	S106/CIL	2,400						2,400			
CF1.4	Broadland	Land South of Salhouse Road Community Building	Requires Project Brief / Feasibility	500	0	S106/CIL	500					500				
CF1.5	Broadland	Rackheath Community Building	Requires Project Brief / Feasibility	500	0	S106/CIL	500						500			
CF1.20	Broadland	Children's Playspace delivered through the development of allocations within the Growth Triangle	Delivered by development.			S106										
CF1.21	Broadland	Informal Open Space delivered through the development of allocations within the Growth Triangle	Delivered by development. Required to fulfil HRA public access to open space requirements.			S106										
GI P9.4.8	Broadland	Cremer's Meadow, Brundall	Project Development	25	0	CIL / NBhd	25			25						
GI P9.4.10	Broadland	Great Plumstead Open Space / Community Orchard	Project Development	25	0	CIL	25				25					
CF2.x	Norwich	Boom Towers		20	0	CIL	20		20							
CF2.x	Norwich	Bowthorpe Play		100	100	S106 & CIL n'hood	13		20	40	40					
CF2.x	Norwich	Castle Gardens	Feasibility and brief writing currently ongoing. £135k CIL maintenance money sought to add to £115k secure maintenance funding and justified through project proforma.	1155	1005	S106 (70 secure), HLF/EU (935 not secured)	150	0	50	500	320	680				
CF2.x	Norwich	Nooks and crannies - environmental improvement to Norwich yards and alleys	Requires Project Brief / Feasibility	300	0		300			30	270					
CF2.x	Norwich	Earlham Park toilets		80	80	CIL n'hood	0		40	40						
CF2.x	Norwich	Heigham Park toilets	Crowd funding?	80	80	CIL n'hood	0				80					
CF2.x	Norwich	Strategic play (including 5 projects)		430	0	CIL	430				115	100	115	100		
	Norwich	Improved sports facilities in Norwich	Pre-feasibility								x	x				
	Norwich	North City estate renewal		tbd			tbd				x	x	x	x		
	South Norfolk	Children's Playspace, Sports Pitches and Informal Recreation Space delivered through the development of allocations	Status review of open space / play projects is required			S106										
Libraries																
CF1.3	Broadland	Community space including new library -North Sprowston & Old Catton	see above										X			
CF1.7	Broadland	Expansion of Sprowston Library				S106/CIL										
CF3.4	South Norfolk	Expansion of Long Stratton library	Awaiting developer contributions once development proceeds.			S106/CIL				Major growth starts						
	Broadland	Wroxham Library self access improvement and parking		43		CIL			43							
	Norwich	Plumstead Road Library self access improvement and parking		85		CIL	120		85							
	South Norfolk	Diss Library self access improvement		35	11	S106/CIL			24							

*Indicative timetable for delivery

Ref	District	Project/Scheme Description	Status	Total Estimated Project Cost	Contributory funding (£,000)	SOURCE	Funding need	Spend Profile £'000s								
								2016/17	2017/18	2018/19	2019/20	2020/21	2021/22	2022/23	2023/24	2024/25
	South Norfolk	Harleston Library self access improvement		35		CIL	35			35						
	South Norfolk	Costessey Library self access improvement		35		CIL	35			35						
	Broadland	St Williams Way Library self access improvement		35		CIL	35			35						
	Norwich	Earlham Library self access improvement		35		CIL	35			35						
	Norwich	Mile Cross Library self access improvement		35		CIL	35			35						
	Broadland	Blofield self access improvement		43		CIL	43				43					
	Broadland	Reepham self access improvement		30		CIL	30				30					
	Norwich	Tuckswood self access improvement		43		CIL	43				43					
	Norwich	West Earlham self access improvement		43		CIL	43				43					
	South Norfolk	Hingham self access improvement		20		CIL	20				20					
Sports Facilities																
CF1.6	Broadland	Extend and Refurbish Rackheath Pavilion	Requires Project Brief / Feasibility	TBC	TBC	CIL/Other	TBC			x						
CF1.8	Broadland	Modernisation of Thorpe St Andrew School swimming pool	Feasibility Study required	1,000		\$106/CIL										
CF1.9	Broadland	New Sports Hall in Thorpe St Andrew	Feasibility Study required	2,700	1,900	\$106/CIL	800			2,700						
CF1.10	Broadland	Refurbishment of 3G pitch in Thorpe St Andrew	Funding being sought from the FA			Other										
CF1.11	Broadland	Modernisation of Hellesdon High School sports hall				\$106/CIL										
CF1.12	Broadland	Modernisation of Aylsham High School swimming pool				\$106										
CF1.13	Broadland	Gym and Dance Hall contribution Aylsham				\$106										
CF1.14	Broadland	Sports Hall Provision in Reepham	Feasibility Study required			\$106										
CF1.15	Broadland	Modernisation of Sprowston High School Swimming Pool		1,000		\$106/CIL										
CF1.16	Broadland	Modernisation of Sprowston High School Sports Hall	Feasibility Study required													
CF1.17	Broadland	A new sports hall in a growth area (such as Rackheath) co-located with a new secondary school	Masterplan developed, planning application expected Summer 2017	2,750												
CF1.18	Broadland	A new sports hall in Acle	Feasibility Study required	2,700		\$106/CIL										
CF1.19	Broadland	New pitch provision in NEG T	Delivered by Development			\$106										
GI NFN 9 BDC Ref; GX15	Broadland	Improve Facilities at King George V Playing Field	Requires Project Brief / Feasibility	TBC		\$106, CIL and Other										
CF2.x	Broadland	Horsford Manor Community Sports Hub	Consultation taking place	6,500		Premier League (?), CSF, others including poss. CIL			x	x	x					
	Broadland	Brundall recreational areas	Design required			\$106/CIL			x	x	x					
CF2.x	Norwich	Bowthorpe Park MUGA and tennis court improvements	Design required	300		City Council Capital Programme					100	100	100			
CF2.x	Norwich	Football Pitch Improvements	Condition survey undertaken	100	0	CIL	100			25	25	25	25			
CF2.x	Norwich	Hewett School swimming pool modernisation	Mechanical & Plant condition survey undertaken, report received	199	0	CIL	199			199						
CF2.x	Norwich	Sloughbottom Park: Improved Changing facilities	Changing facility feasibility required	?	15	\$106			?							
	Norwich	Norwich Parks Tennis expansion phase 1 - Eaton Park, Heigham Park, Harford Park, Lenham Rec court improvements, lighting provision, access improvements, community tennis programme - no maintenance requirement	Council capital approved, \$106 received, LTA funding submission imminent.	395	395	City Council Capital, \$106, LTA grant	0	0	0	395						

*Indicative timetable for delivery

Ref	District	Project/Scheme Description	Status	Total Estimated Project Cost	Contributory funding (£,000)	SOURCE	Funding need	Spend Profile £'000s									
								2016/17	2017/18	2018/19	2019/20	2020/21	2021/22	2022/23	2023/24	2024/25	2025/26
	Norwich	Norwich Parks Tennis expansion phase 2 - court improvements, lighting provision, access improvements.	Development required		???									???			
	Norwich	Improved sports facilities in North Norwich	Considerable development work and feasibility required								x	x	x				
CF3.x	South Norfolk	New Swimming Pool and Sports Hall in Diss	Scoping report being undertaken	10,000-12,000	6,800-8,800	CIL/other	3,200				1,600						
CF3.x	South Norfolk	Artificial Grass Pitch in Diss	Feasibility Required	500		CIL/Other				500							
PPS	South Norfolk	Improvements to Hales cricket and bowls clubhouse		160	10	CIL	30		30								
CF3.x	South Norfolk	New Pitches North Hethersett	Delivered by Development	?		S106			x								
CF3.x	South Norfolk	Long Stratton Sports Hub, pitch improvements	Feasibility Required	2,545	2,045	CIL/Other	500		2,545								
CF3.x	South Norfolk	New sports improvements (artificial grass pitch for football/rugby) in Wymondham	Discussions underway with Wymondham Town Council re AGP provision and improvements to natural turf pitches. FA keen to invest capital up to £500k	1,000		CIL/Football Foundation/SNC	250		1,000								
PPS	South Norfolk	Improvements to Wymondham (Ketts Park) tennis clubhouse		30		CIL			x								
	South Norfolk	Delivery of AGP and natural grass pitches by Wymondham Rugby Club (relocation and upgrade of facilities)	Wymondham Rugby Club planning permission granted on appeal in September 2016. Reserved Matters submitted December 2016. Plan for new site to be open for start of 2018/19 season	?	None	Developer & WRFC	0		x								
Waste Recycling Centres																	
HWRC1.1	Broadland	Rackheath	Requires Project Brief / Feasibility	450		S106/CIL	450										
Policing																	
CI 1.1	Broadland	Police Deployment Base - Vicinity of Postwick Junction	Norfolk Constabulary Broadland Command Policing Plan	TBC		Other					x						
Health Care																	
HC4	Broadland	Sprowston / Old Catton Health and Social Care Facility	Infrastructure Needs and Funding Study 2009	3,350		Other									x		
HC5	Broadland	Rackheath Health and Social Care Facility	Infrastructure Needs and Funding Study 2010	3,350		Other							x				
HC6	Broadland	NE Norwich - Expansion of existing Heath and Social Care Facility	Infrastructure Needs and Funding Study 2011	TBC		Other											
Acle Neighbourhood Plan																	
NP1.1.1	Broadland	Improved foot and cycle links to countryside and surrounding villages	Requires Project Brief / Feasibility			CIL and Other											
NP1.1.2	Broadland	Improved access to Wherry Line - Pedestrian and Cycle access to Station and Facilities.	Requires Project Brief / Feasibility			CIL and Other											
NP1.1.3	Broadland	Traffic Calming and Pedestrian Crossing of A1064	Requires Project Brief / Feasibility			CIL and Other											
NP1.1.4	Broadland	Village Centre Public Realm Improvements inc. increasing pavement width and open space	Requires Project Brief / Feasibility			CIL and Other											
NP1.1.5	Broadland	Improvement to existing Pre-School Facility at Primary School	Neighbourhood Plan Project Requires Project Brief / Feasibility			CIL and Other											
NP1.1.6	Broadland	Improvements to Building and Sports Facilities	Requires Project Brief / Feasibility			CIL and Other											

*Indicative timetable for delivery

Ref	District	Project/Scheme Description	Status	Total Estimated Project Cost	Contributory funding (£,000)	SOURCE	Funding need	Spend Profile £'000s								
								2016/17	2017/18	2018/19	2019/20	2020/21	2021/22	2022/23	2023/24	2024/25
Sprowston Neighbourhood Plan																
NP1.4.1	Broadland	New Pedestrian and Cycle Link Plantation Drive to Harrison's Plantation (Via Cottage Plantation)	Requires Project Brief / Feasibility			CIL and Other										
NP1.4.2	Broadland	Community Hub - Diamond Centre	Feasibility Ongoing			CIL and Other	x									
NP1.4.3	Broadland	Public Realm Improvements at Wroxham Road Local Centre and Tree Planting along Wroxham Road	Requires Project Brief / Feasibility			CIL and Other										
NP1.4.4	Broadland	Public Realm Improvements inc. Traffic Calming Measures, Planting and review of on-street parking. School Lane, Sprowston	Requires Project Brief / Feasibility			CIL and Other										
Strumpshaw Neighbourhood Plan																
			c													
NP1.5.1	Broadland	Community Room and Allotments	To be delivered through development			\$106										
NP1.5.2	Broadland	Toilet, Kitchen and Amenity Facilities at St Peters Church				CIL and Other										
Great and Little Plumstead Neighbourhood Plan																
	Broadland	New Changing Rooms Gt Plumstead Playing Field	Requires Project Brief / Feasibility	TBC		CIL and Other										
	Broadland	Water Lane Footpath Improvements	Requires Project Brief / Feasibility	TBC		CIL and Other										
	Broadland	New Bus Stop opposite Bus Shelter	Requires Project Brief / Feasibility	TBC		CIL and Other										
	Broadland	Junction Improvements at Brick Kilns Public House	Requires Project Brief / Feasibility	TBC		CIL and Other										
	Broadland	Woodland Walk Extension at Thorpe End	Requires Project Brief / Feasibility	TBC		CIL and Other										
Brundall Neighbourhood Plan																
	Broadland	Public Realm Improvements at Local Centres and Gateways	Requires Project Brief / Feasibility	TBC		CIL and Other										
	Broadland	Footway and Cycleway Improvements	Requires Project Brief / Feasibility	TBC		CIL and Other										
Drayton Neighbourhood Plan																
	Broadland	Improved Off Street Public Parking at Village Centre	Requires Project Brief / Feasibility	TBC		CIL and Other										
	Broadland	Highway Improvements and Public Realm Enhancements at Village Centre	Requires Project Brief / Feasibility	TBC		CIL and Other										
	Broadland	Footway and Cycleway Improvements	Requires Project Brief / Feasibility	TBC		CIL and Other										
	Broadland	GI Improvements at Drayton Drewray, Canham Hill and Drayton Wood	Requires Project Brief / Feasibility	TBC		CIL and Other										
	Broadland	Improved Facilities at King George V Playing Field	Requires Project Brief / Feasibility	TBC		CIL and Other										
Blofield Neighbourhood Plan																
	Broadland	Provision of New Community Green Assets: Woodland or Community Garden	Requires Project Brief / Feasibility	TBC		CIL and Other										
	Broadland	Secure Allotments in Perpetuity		TBC		TBC										
	Broadland	Public Realm Improvements at Village Gateways	Requires Project Brief / Feasibility	TBC		CIL and Other										
	Broadland	Community Hall	Requires Project Brief / Feasibility	TBC		CIL and Other										
	Broadland	Create Community Hub in Blofield and Blofield Heath	Requires Project Brief / Feasibility	TBC		CIL and Other										

*Indicative timetable for delivery

Ref	District	Project/Scheme Description	Status	Total Estimated Project Cost	Contributory funding (£,000)	SOURCE	Funding need	Spend Profile £'000s									
								2016/17	2017/18	2018/19	2019/20	2020/21	2021/22	2022/23	2023/24	2024/25	2025/26
	Broadland	Improvements to Hemblington Primary School, including identifying suitable pick up and drop off points	Requires Project Brief / Feasibility	TBC		CIL and Other											
	Broadland	Improvements to Blofield Primary School, including identifying suitable pick up and drop off points	Requires Project Brief / Feasibility	TBC		CIL and Other											
	Broadland	Improvements to Blofield Health Care Centre, including capacity and increased car parking.	Requires Project Brief / Feasibility	TBC		CIL and Other											
	Broadland	Improve Broadband Connectivity	Requires Project Brief / Feasibility	TBC		CIL and Other											
	Broadland	New Pedestrian Crossings at The Street, Plantation Road and Woodbastwick Road	Requires Project Brief / Feasibility	TBC		CIL and Other											
	Broadland	Footpath/Cycleway between Blofield and Blofield Heath	Requires Project Brief / Feasibility	TBC		CIL and Other											
	Broadland	Improve Pedestrian Access to Countryside	Requires Project Brief / Feasibility	TBC		CIL and Other											
	Broadland	Highway Improvements on The Street, including enhanced parking and crossing facilities.	Requires Project Brief / Feasibility	TBC		CIL and Other											
Old Catton Neighbourhood Plan																	
	Broadland	Junction Improvements at St Faiths Road and Fifers Lane	Requires Project Brief / Feasibility	TBC		CIL and Other											
	Broadland	St Faiths Road and Lodge Lane Junction	Requires Project Brief / Feasibility	TBC		CIL and Other											
	Broadland	Address traffic volumes, speed reduction and safe crossing in Church Street	Requires Project Brief / Feasibility	TBC		CIL and Other											
	Broadland	Spixworth Road Parking and Speed Reductions	Requires Project Brief / Feasibility	TBC		CIL and Other											
	Broadland	Crossing facility at St Faiths Road and Fifers Lane	Requires Project Brief / Feasibility	TBC		CIL and Other											
	Broadland	Reduce rat runnign on Oak Street	Requires Project Brief / Feasibility	TBC		CIL and Other											
	Broadland	Stop up St Faiths Road	Requires Project Brief / Feasibility	TBC		CIL and Other											
	Broadland	Orbital Link Road Access to NIA IE	Requires Project Brief / Feasibility	TBC		CIL and Other											
	Broadland	Additional Bus Stops and Benches	Requires Project Brief / Feasibility	TBC		CIL and Other											
	Broadland	New Footpath Link Woodham Leas and Priors Lane to Lodge Lane Infant School and Doctors Surgery	Requires Project Brief / Feasibility	TBC		CIL and Other											
Cringleford Neighbourhood Plan																	
NP2.1.4 (GI NFS 3.1 and 7.3)	South Norfolk	Demand for Cycling and walking facilities	Probably covered through Cycle City project?					x									
NP2.1.3	South Norfolk	Demand for Medical / Dentistry facilities	Unlikely to be delivered other than through NHS funding														
NP2.1.5	South Norfolk	3.8 hectare playing field to accommodate a cricket pitch, football pitches and Pavilion to include changing rooms.	Scheme allowed at appeal in January 2016. Land being promoted for sale (January 2017) by promoter but timescale uncertain						x								

*Indicative timetable for delivery

Ref	District	Project/Scheme Description	Status	Total Estimated Project Cost	Contributory funding (£,000)	SOURCE	Funding need	Spend Profile £'000s										
								2016/17	2017/18	2018/19	2019/20	2020/21	2021/22	2022/23	2023/24	2024/25	2025/26	
NP2.1.6	South Norfolk	Cringleford Library facilities	All developers will be required to make provision for additional library facilities for the library service which serves the development. This will be funded through Community Infrastructure Levy															
NP2.1.7	South Norfolk	Allotment and Community Orchard	A possible site is indicated on the Proposals Map. Barratts to deliver as part of the S106 (although these discussions are not yet finalised)					x										
Mulbarton Neighbourhood Plan																		
NP2.2.1	South Norfolk	Improved car parking management around the schools/GP surgery				CIL and Other												
NP2.2.2	South Norfolk	An improvement at the B1113/A140 Harford Bridge junction				CIL and Other												
NP2.2.3	South Norfolk	Improved footway and road maintenance in the village				CIL and Other												
NP2.2.4	South Norfolk	Reduced traffic speeds on existing residential streets and lanes in the village				CIL and Other												
NP2.2.5	South Norfolk	Cycle routes to Hethel Engineering Centre/Lotus and Norwich				CIL and Other												
NP2.2.6	South Norfolk	An improved bus service				CIL and Other												

For more information or if you
require this document in another
format or language, please
phone:

01603 431133
for Broadland District Council

0344 980 3333
for Norwich City Council

0808 168 3000
for South Norfolk Council

Greater Norwich Infrastructure Plan
April 2017

