

Presentation at
Norfolk County Council
February 19th 2009

**Norwich Policy Area –
Future Growth and Transport**

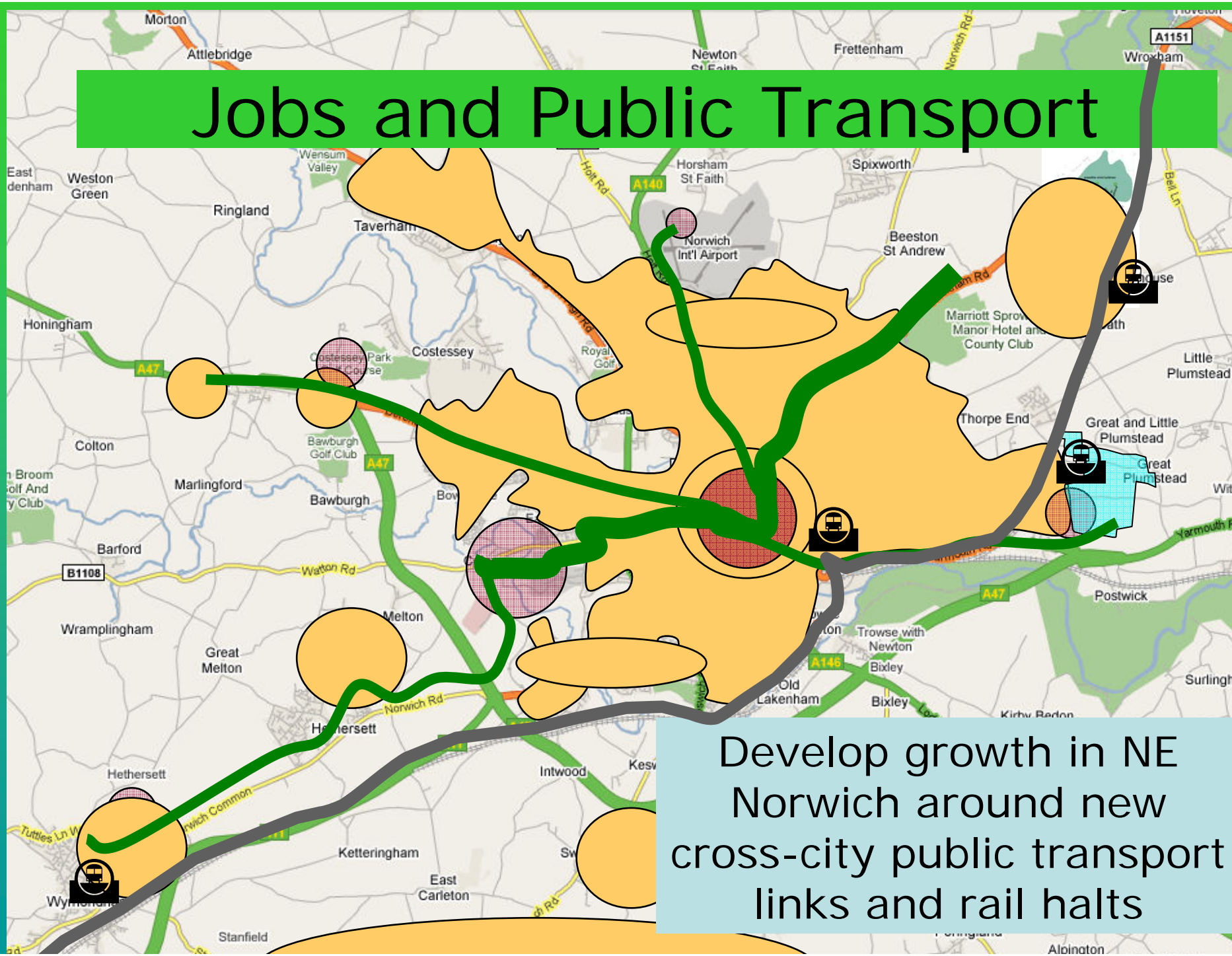
*Denise Carlo,
Norwich and Norfolk Transport Action Group,*

*Ian Shepherd,
Campaign to Protect Rural England,*

and

Keith Buchan, MTRU

Jobs and Public Transport



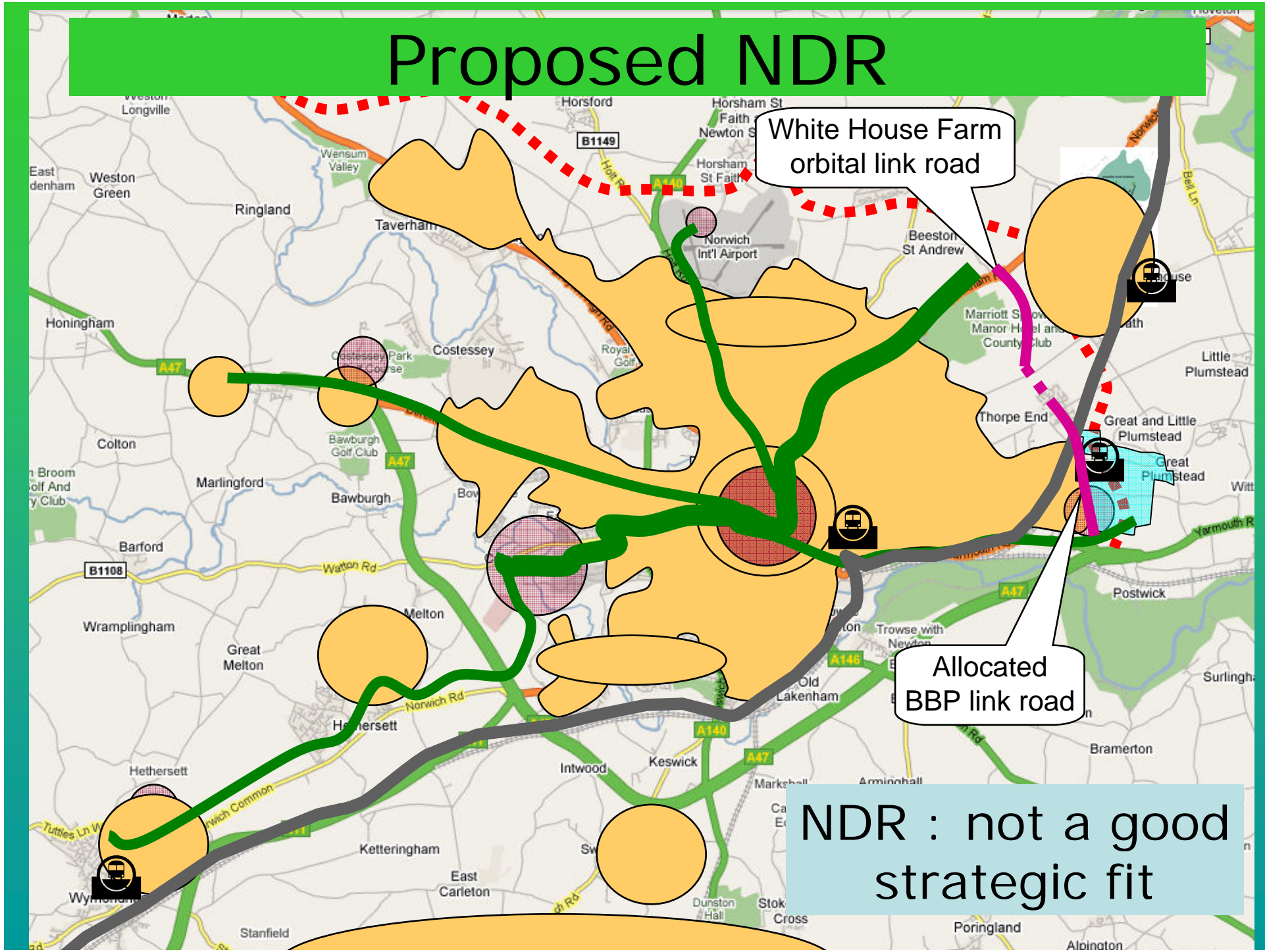
Develop growth in NE Norwich around new cross-city public transport links and rail halts

Proposed NDR

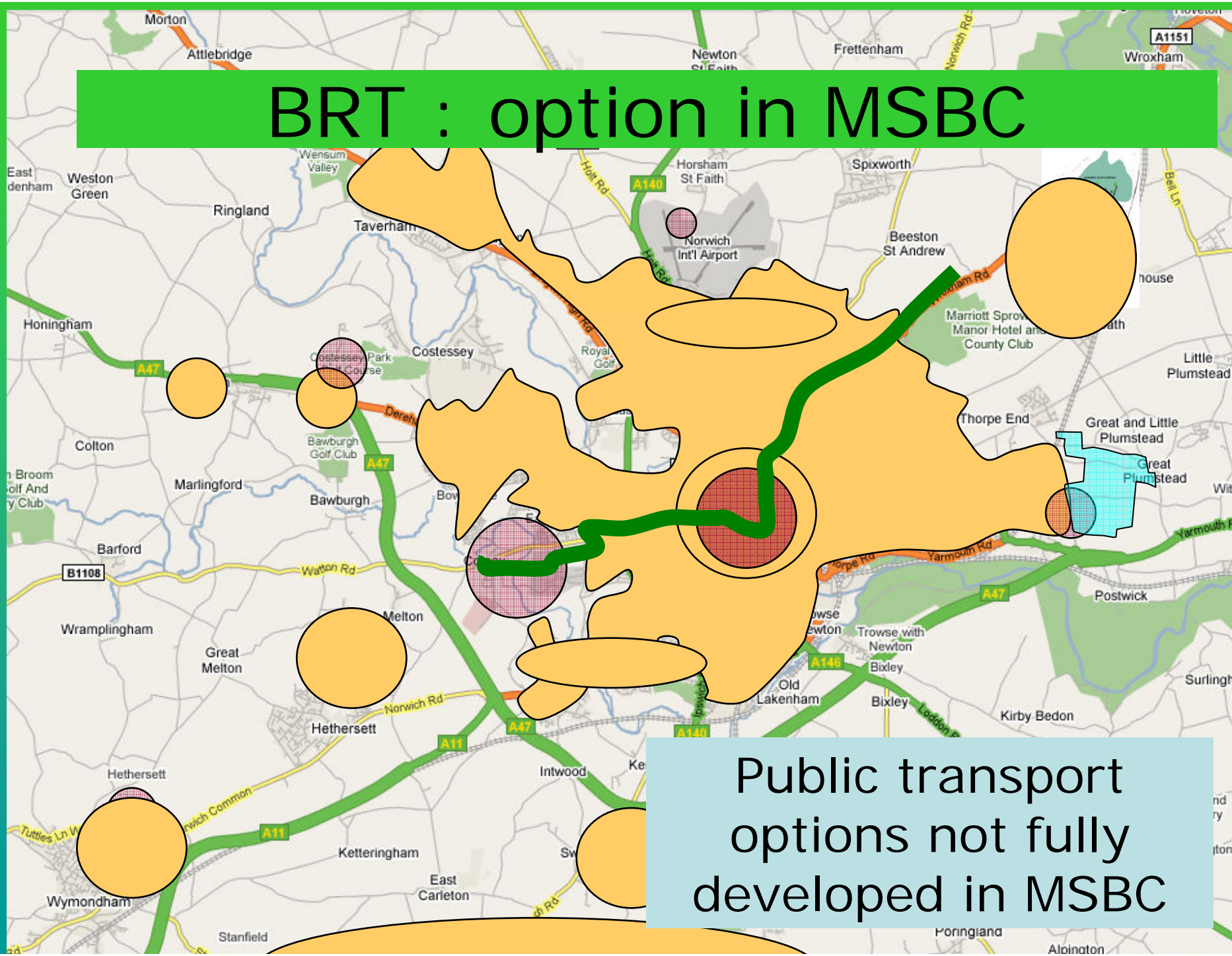
White House Farm orbital link road

Allocated BBP link road

NDR : not a good strategic fit

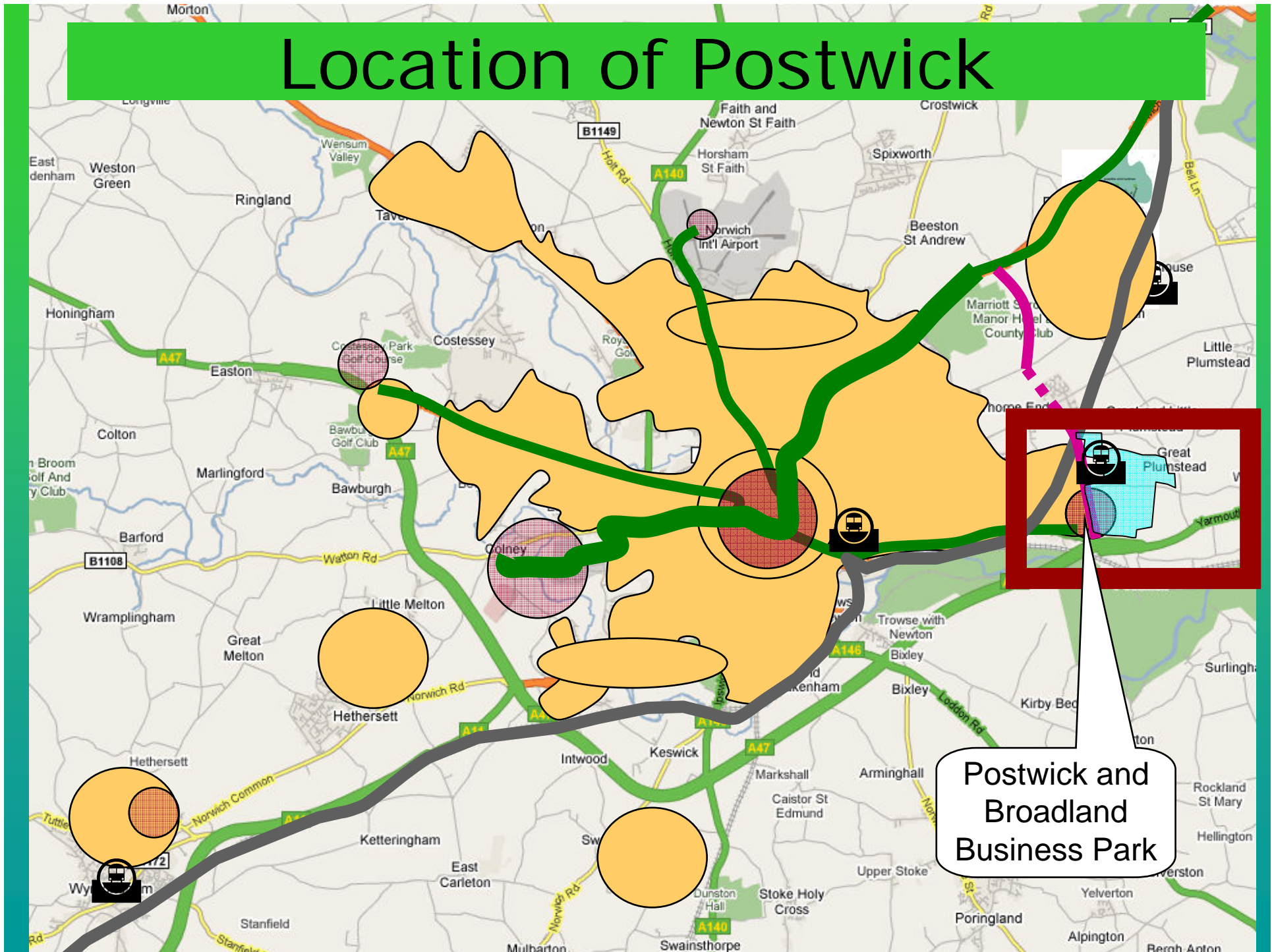


BRT : option in MSBC



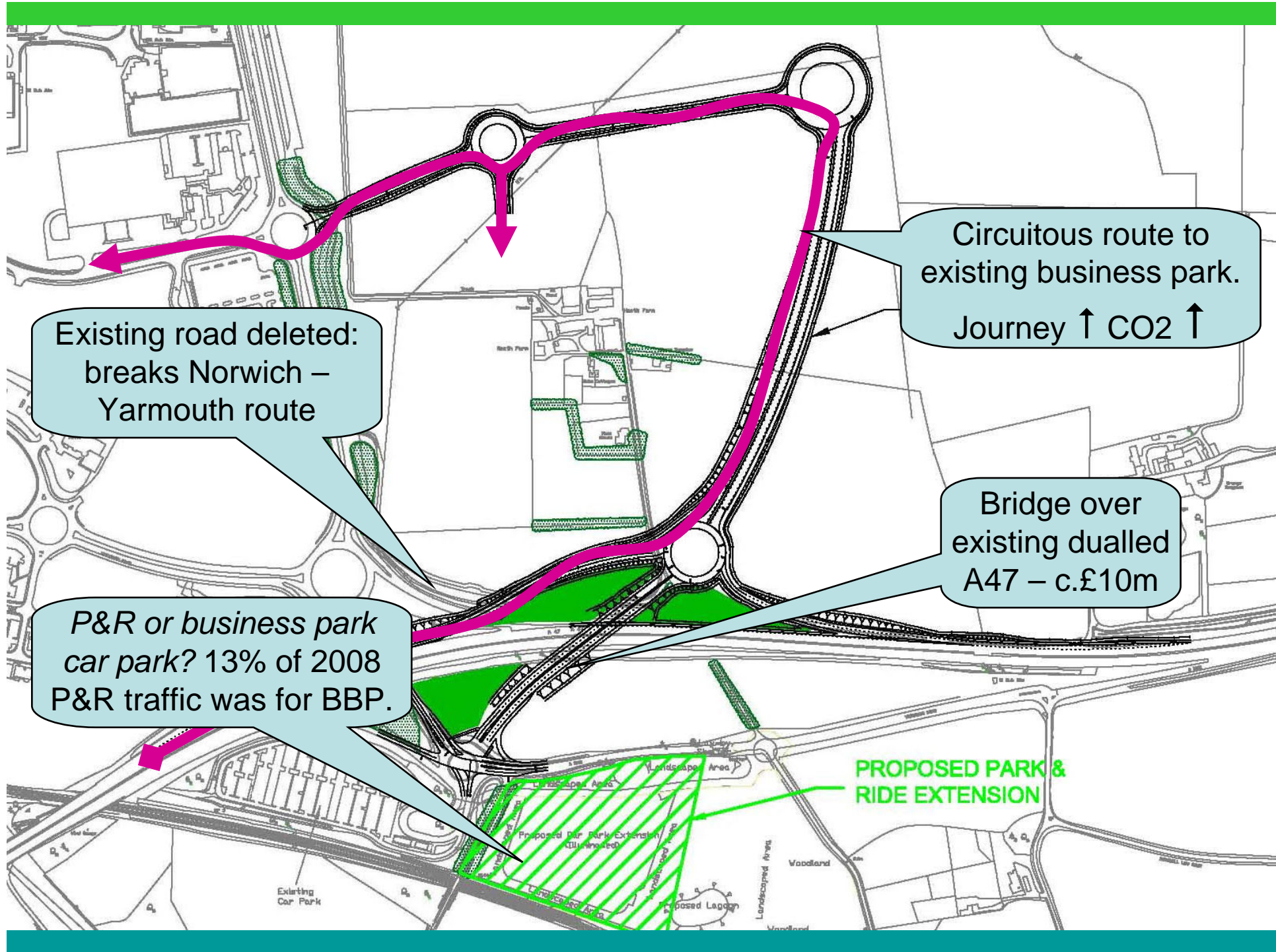
Public transport options not fully developed in MSBC

Location of Postwick



Postwick Hub

- Issues
 - Lack of stacking capacity leaving the A47 northbound in am peak (HA Article 14)
 - Give access to Broadland Business Park Phase 2
 - Unlock housing land to north
- Is a major new gyratory the solution?
- 1st stage of a NDR. (Full Business Case submitted to CLG in Oct 08)
- Planning application in detail for Junction Improvements to Postwick Interchange (submitted to Broadland DC, Jan 09).
 - Described as access road to business park. No references to relationship with NDR.



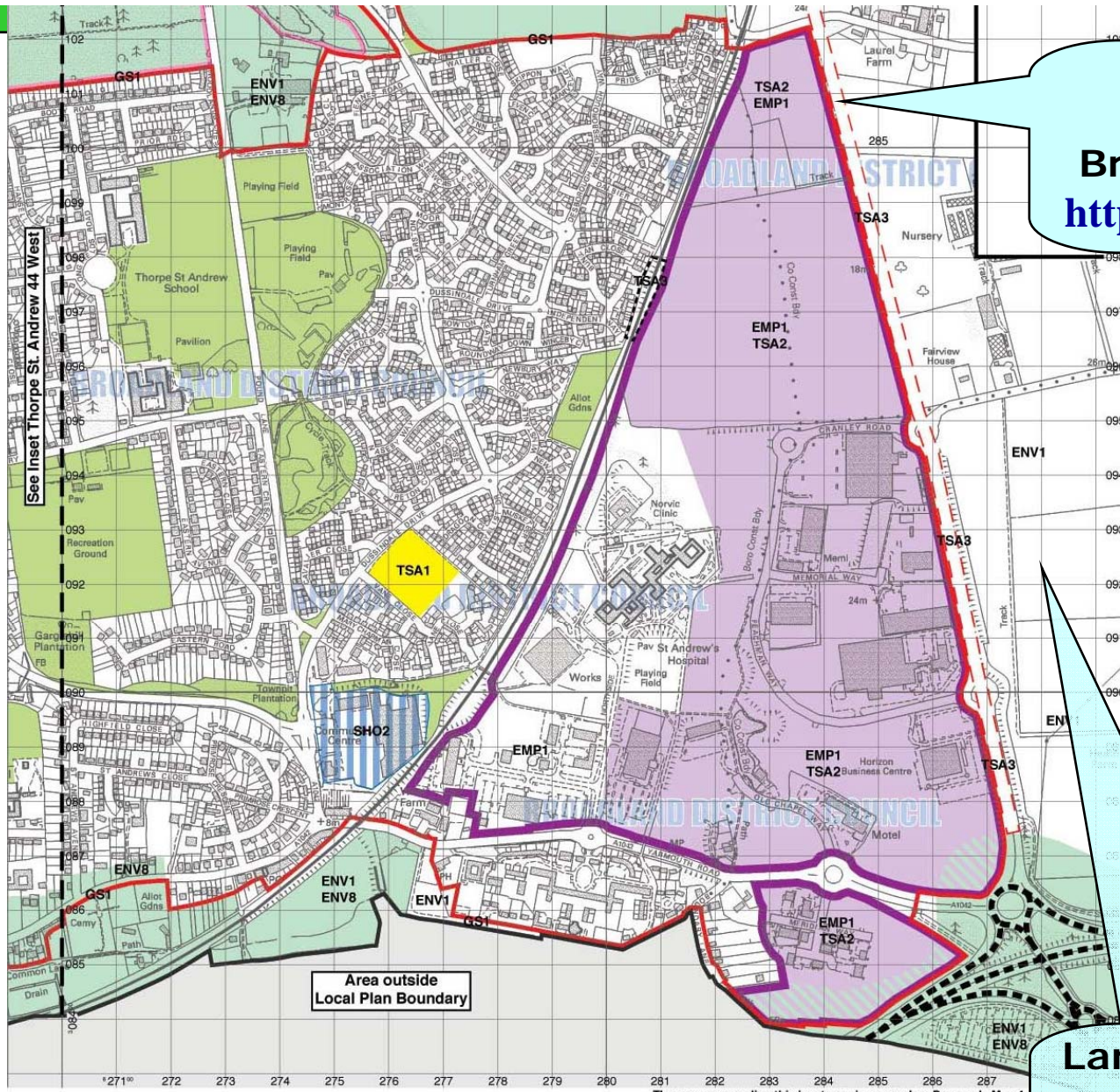
Existing road deleted:
breaks Norwich –
Yarmouth route

Circuitous route to
existing business park.
Journey ↑ CO2 ↑

Bridge over
existing dualled
A47 – c.£10m

*P&R or business park
car park? 13% of 2008
P&R traffic was for BBP.*

**PROPOSED PARK &
RIDE EXTENSION**



BBP link road – allocated in Broadland Plan – see <http://tinyurl.com/bbplink>

Land East of Link Road - NO development Proposals in Broadland Plan

Broadland District Council
Broadland District Local Plan (Replacement)
 Adopted Version 2006

This material has been reproduced from Ordnance Survey digital data with the permission of the Controller of Her Majesty's Stationery Office.
 © Crown Copyright.
 License No. SA 07/201

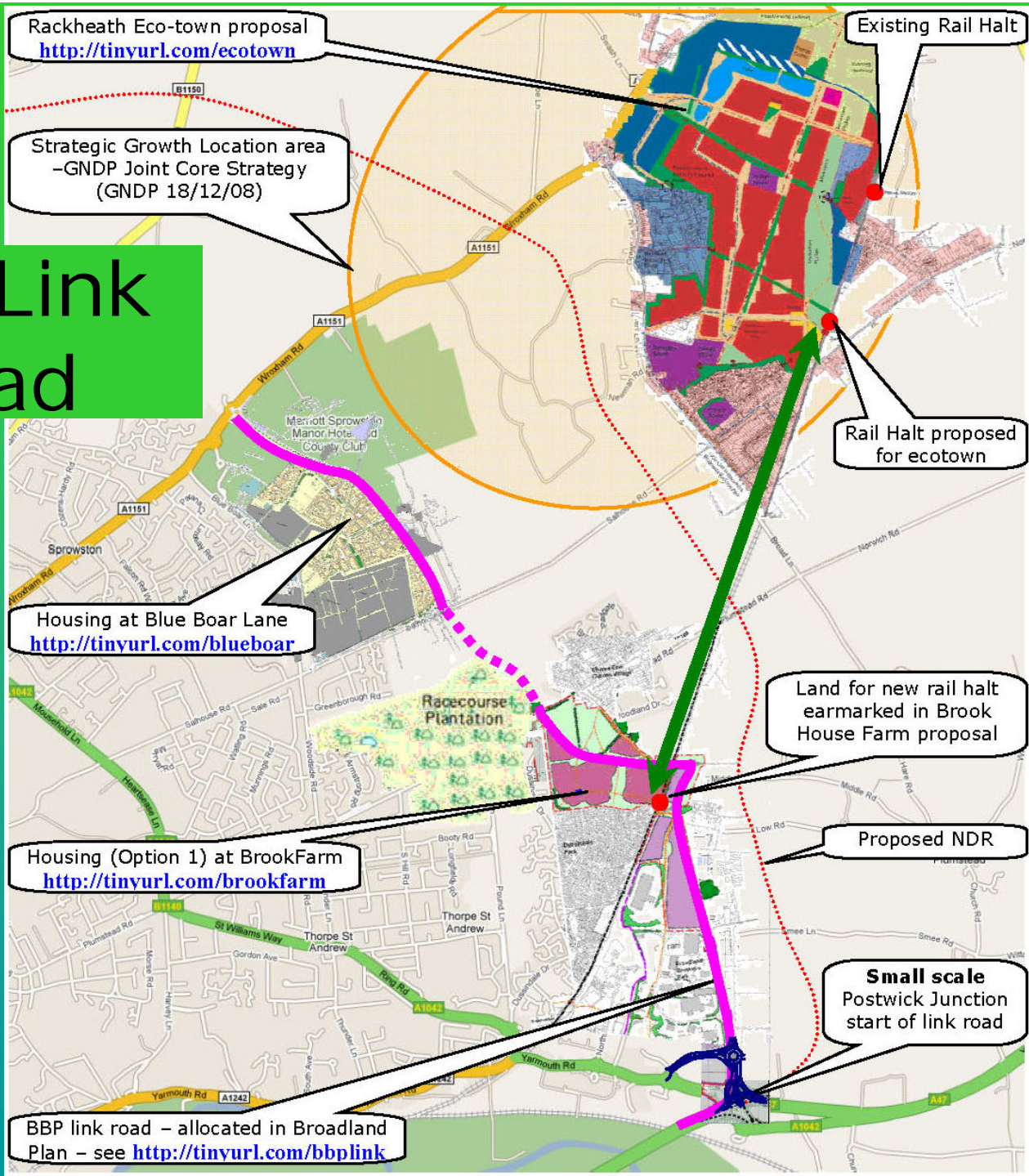
Phil Kirby BAHons MRTPI Strategic Director (Community Services)
 Thorpe Lodge, 1 Yarmouth Road, Thorpe St. Andrew, Norwich, NR7 0DU

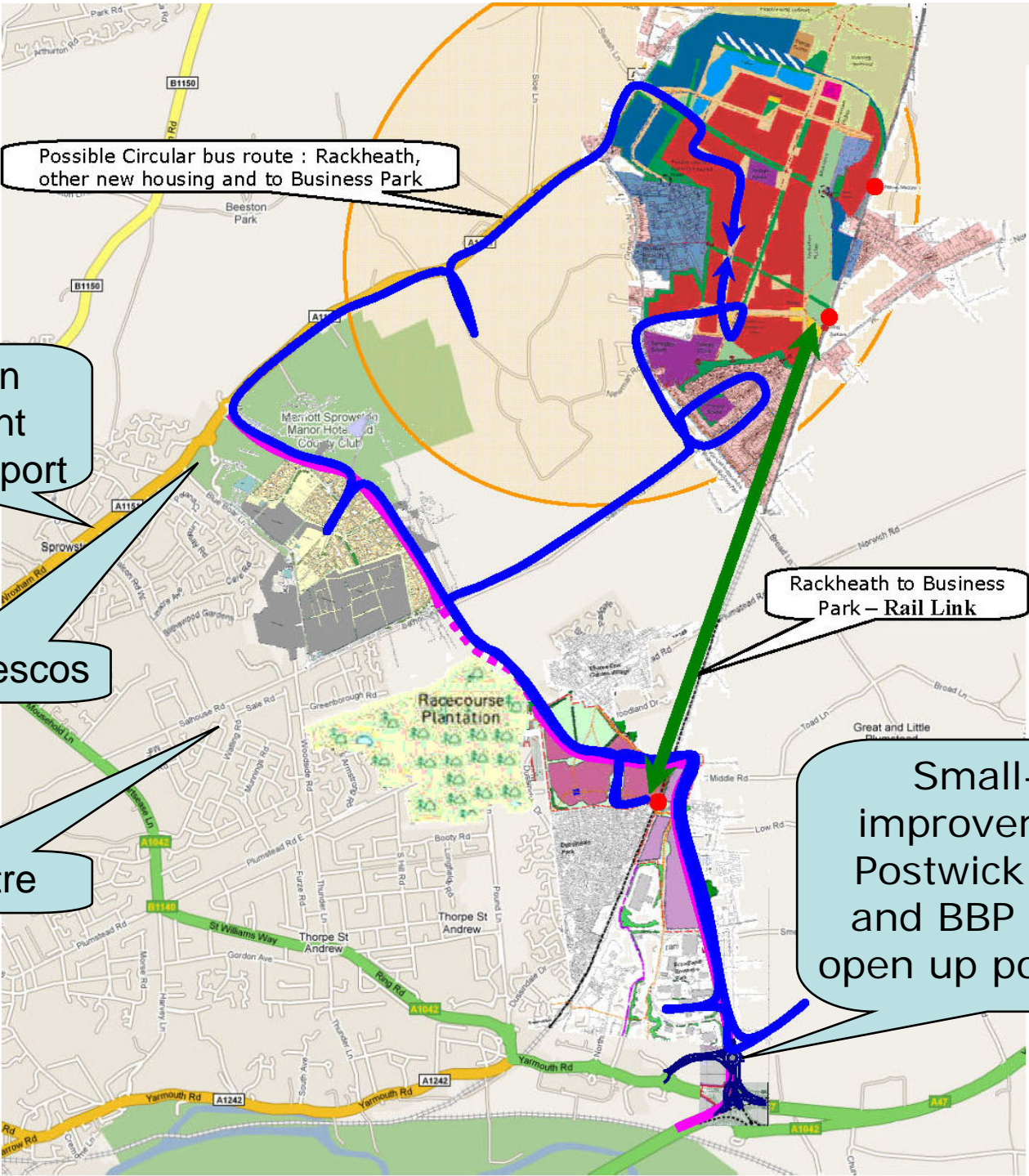
Scale of Metres
 200m 0 100m 200m 300m 400m

N

The area surrounding this inset map is covered on Proposals Map 4.

BBP Link Road





Possible Circular bus route : Rackheath, other new housing and to Business Park

To northern employment areas and airport

Sprowston Tescos

To city centre

Rackheath to Business Park – Rail Link

Small-scale improvements to Postwick junction and BBP link road open up possibilities.

Eco-town Developer proposals

