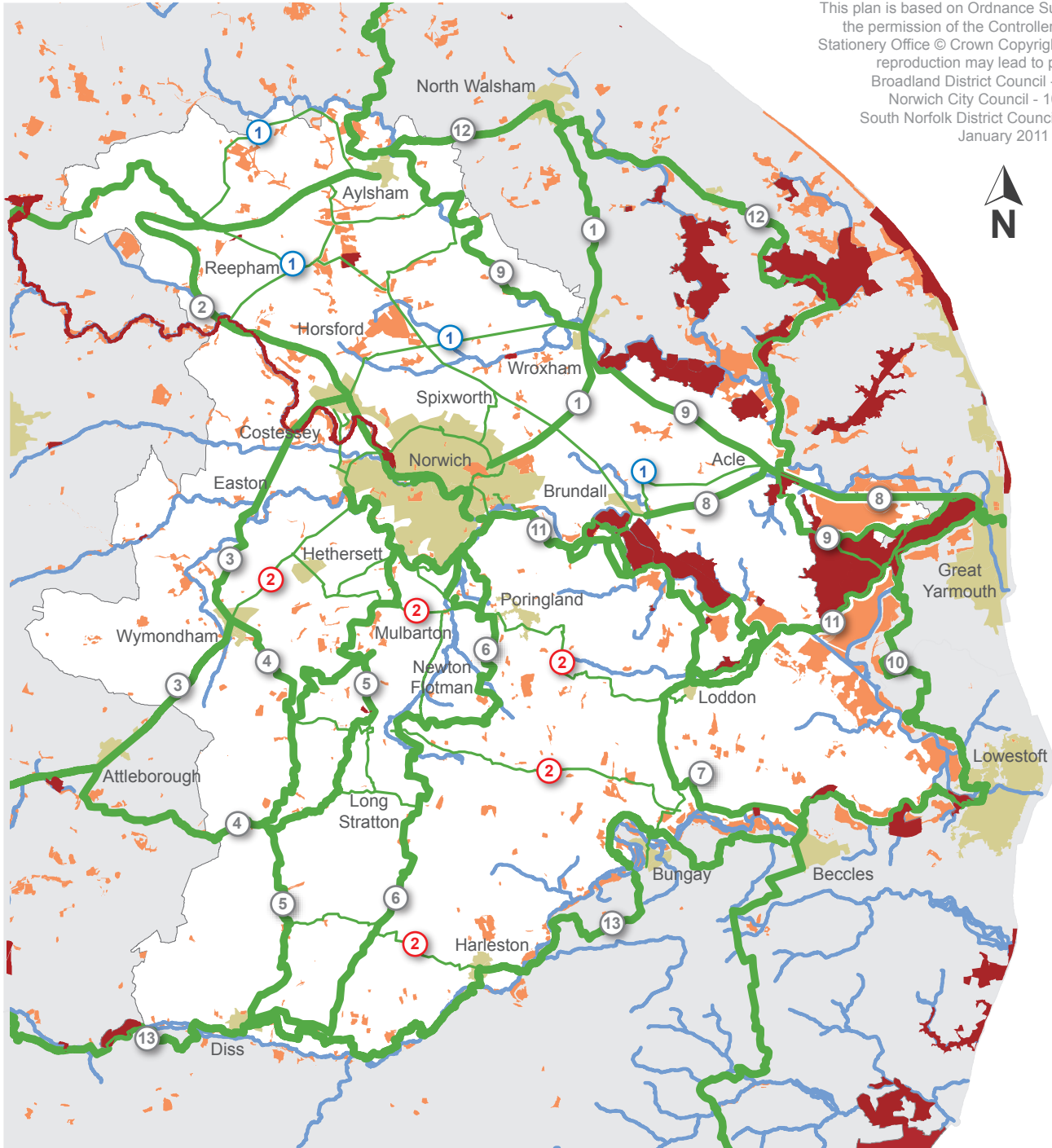


Proposed Green Infrastructure Network for the Greater Norwich Area

Source: Greater Norwich Green Infrastructure Study 2007.

The Green Infrastructure opportunities on this map are indicative only. The map illustrates information about opportunities at a strategic level and does not indicate a constraint on development.

This plan is based on Ordnance Survey Map Data with the permission of the Controller of her Majesty's Stationery Office © Crown Copyright. Any unauthorised reproduction may lead to prosecution.
 Broadland District Council - 100022319
 Norwich City Council - 100019747
 South Norfolk District Council - 100019483
 January 2011



-  Local Green Infrastructure Corridors
-  Sub-Regional Green Infrastructure Corridor
-  Existing Main Urban Areas
-  River Valleys & Wetlands
-  Existing Green Infrastructure Sites
(Strategic Open Spaces & Core Biodiversity Areas, including Sites of Special Scientific Interest and County Wildlife Sites)
-  European & International Designated Wildlife Sites

- ① North East Norwich - Wroxham - North Walsham Corridor
- ② Norwich - Reepham - Aylsham Corridor
- ③ North West Norwich - Wymondham - Attleborough - Thetford Corridor
- ④ South West Norwich - Wymondham - Attleborough Corridor
- ⑤ South Norwich - Mulbarton - Diss Corridor
- ⑥ South Norwich - East Diss Corridor
- ⑦ Loddon - Beccles - Lowestoft Corridor
- ⑧ East Norwich - Brundall - Acle - Great Yarmouth Corridor
- ⑨ Aylsham - Wroxham - Acle - Great Yarmouth Corridor
- ⑩ Great Yarmouth - Lowestoft Corridor
- ⑪ East Norwich - The Broads - Great Yarmouth Corridor
- ⑫ Acle - North Walsham - Aylsham - Cromer Corridor
- ⑬ Lowestoft - Beccles - Bungay - Harleston - Diss - Thetford Corridor
- ① Northern Greater Norwich Area Green Infrastructure Corridor Network
- ② Southern Greater Norwich Area Green Infrastructure Corridor Network