

See Inset Sprowston 41D

See Inset Sprowston 41B

See Inset Sprowston 41C

The notation of the `Old Catton, Sprowston, Rackheath, Thorpe St Andrew Growth Triangle` forms part of the pre-submission content.

Growth Triangle boundary

Area outside Local Plan boundary

See Inset Thorpe St Andrew 44A

Broadland District Council
 leading the way
 broadland.gov.uk

Sprowston (41E)
 Changes to Local Plan Proposals Map
 for Joint Core Strategy

Scale 1:5000

0 25 50 75 100 125 150 175 200
 Metres

This map is reproduced from Ordnance Survey material with the permission of Ordnance Survey on behalf of the Controller of Her Majesty's Stationery Office. Crown copyright. Unauthorised reproduction infringes Crown copyright and may lead to prosecution or civil proceedings. (100018156) (2005)

The notation of the 'Old Catton, Sprowston, Rackheath, Thorpe St Andrew Growth Triangle' forms part of the pre-submission content.


See Inset Old Catton 32A

Growth Triangle boundary

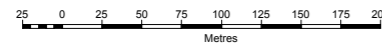
See Inset Sprowston 41D

See Inset Old Catton 32B

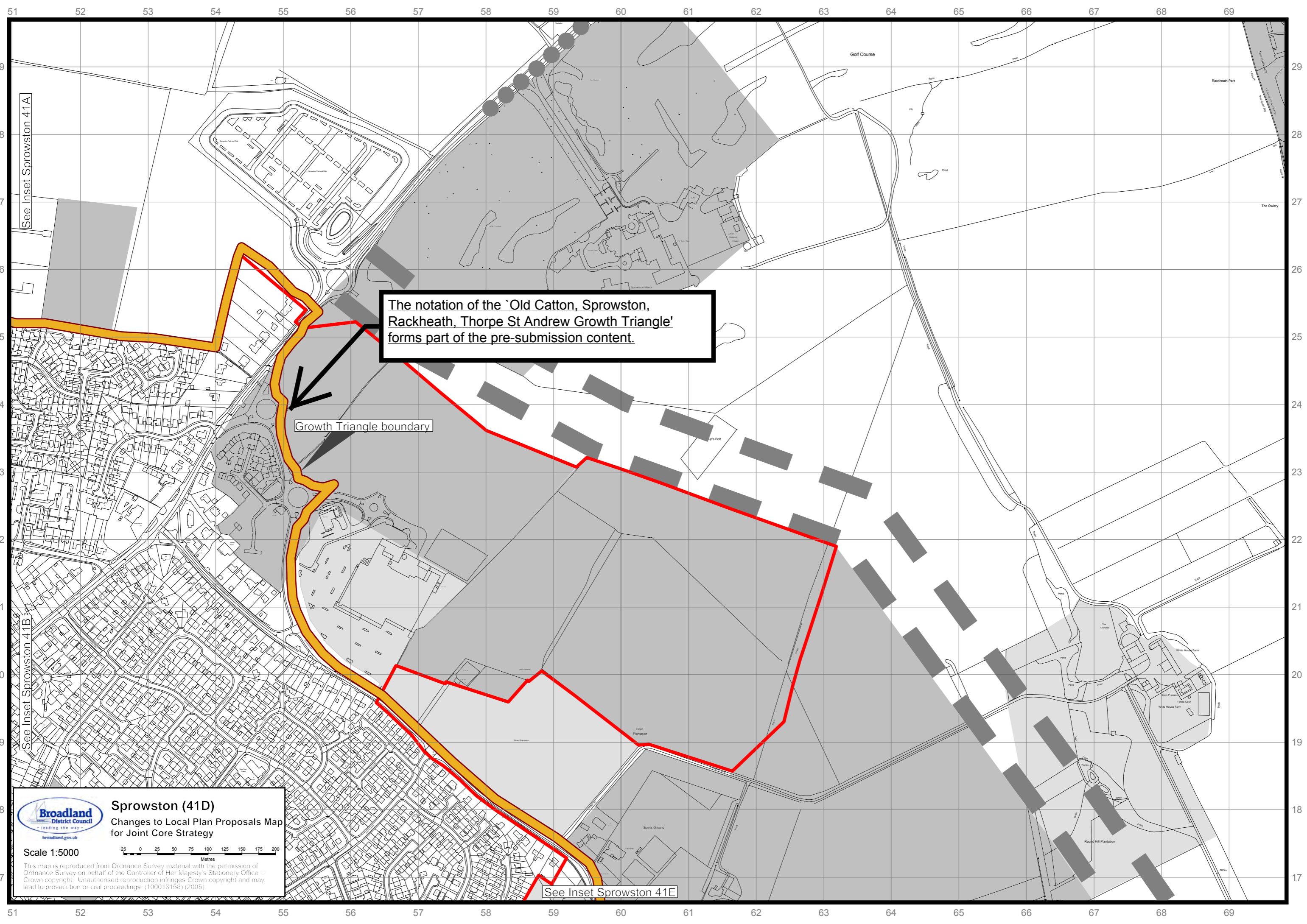
See Inset Sprowston 41B

 **Sprowston (41A)**
Changes to Local Plan Proposals Map
for Joint Core Strategy

Scale 1:5000



This map is reproduced from Ordnance Survey material with the permission of Ordnance Survey on behalf of the Controller of Her Majesty's Stationery Office. Crown copyright. Unauthorised reproduction infringes Crown copyright and may lead to prosecution or civil proceedings. (100018156) (2005)



The notation of the `Old Catton, Sprowston, Rackheath, Thorpe St Andrew Growth Triangle` forms part of the pre-submission content.

Growth Triangle boundary

See Inset Sprowston 41A

See Inset Sprowston 41B

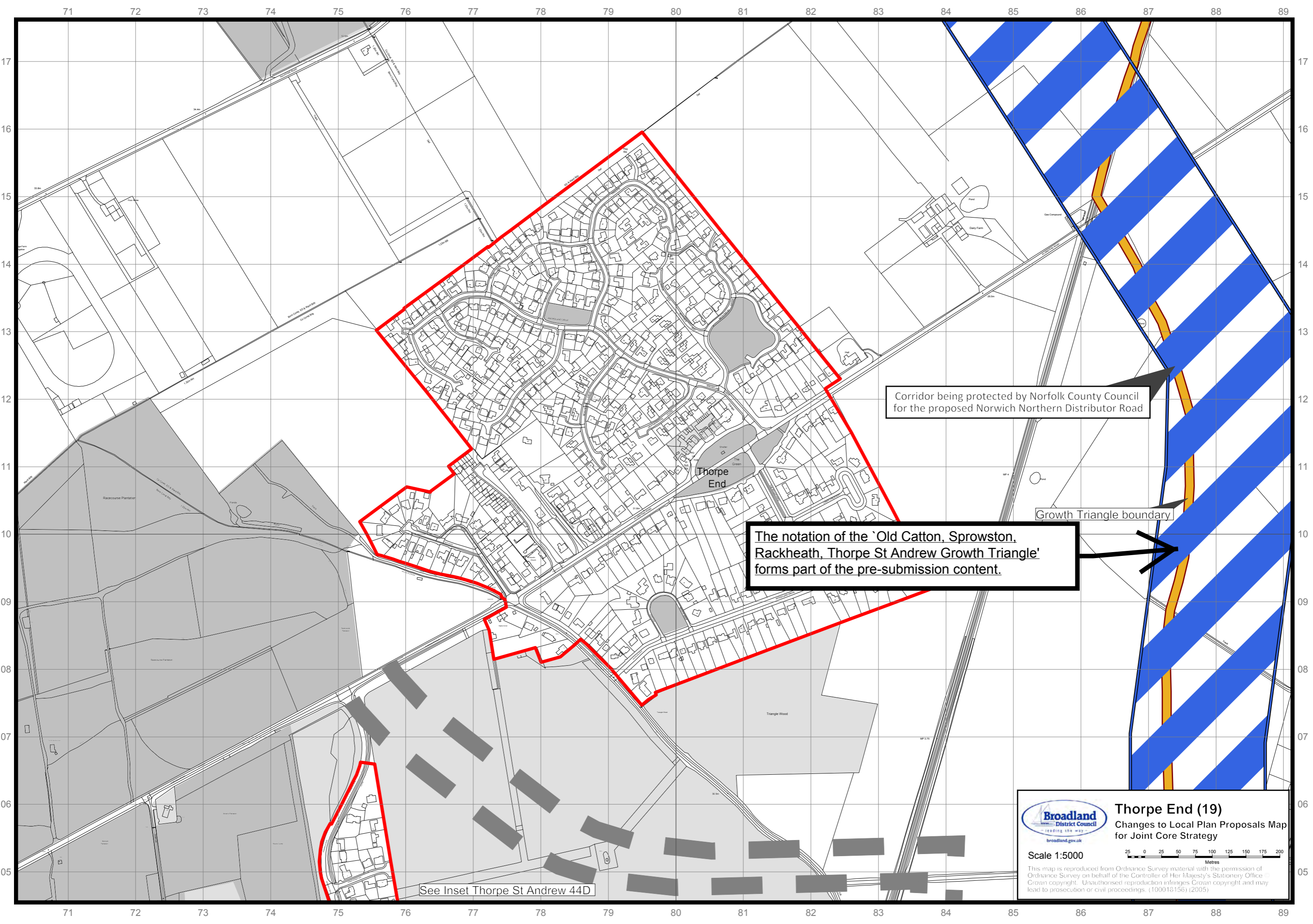
See Inset Sprowston 41E

 **Sprowston (41D)**
Changes to Local Plan Proposals Map
for Joint Core Strategy

Scale 1:5000



This map is reproduced from Ordnance Survey material with the permission of Ordnance Survey on behalf of the Controller of Her Majesty's Stationery Office. Crown copyright. Unauthorised reproduction infringes Crown copyright and may lead to prosecution or civil proceedings: (100018156) (2005)



Corridor being protected by Norfolk County Council for the proposed Norwich Northern Distributor Road

Growth Triangle boundary

The notation of the 'Old Catton, Sprowston, Rackheath, Thorpe St Andrew Growth Triangle' forms part of the pre-submission content.

See Inset Thorpe St Andrew 44D

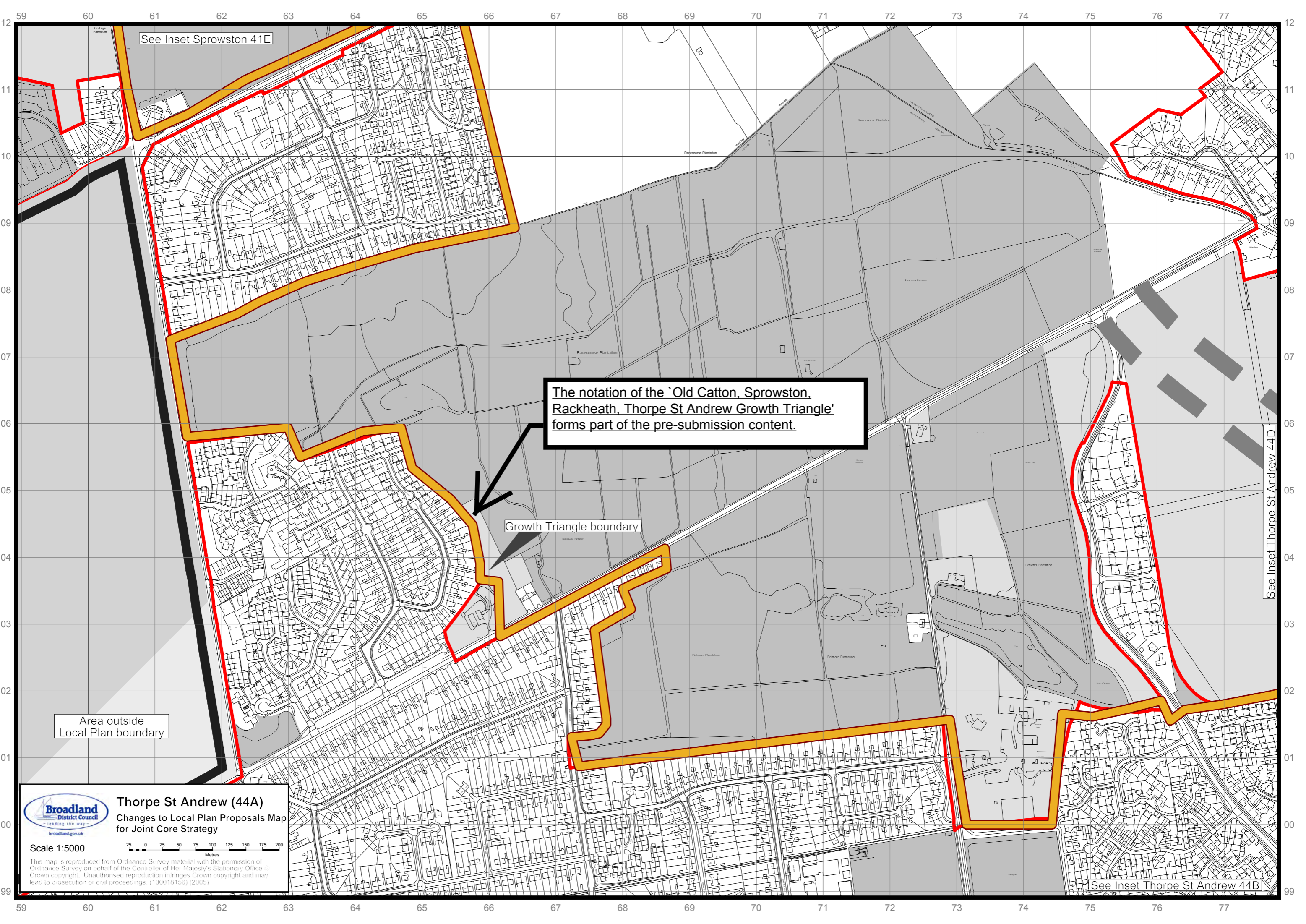
Broadland District Council
 leading the way
 broadland.gov.uk

Thorpe End (19)
 Changes to Local Plan Proposals Map for Joint Core Strategy

Scale 1:5000

25 0 25 50 75 100 125 150 175 200
 Metres

This map is reproduced from Ordnance Survey material with the permission of Ordnance Survey on behalf of the Controller of Her Majesty's Stationery Office. Crown copyright. Unauthorised reproduction infringes Crown copyright and may lead to prosecution or civil proceedings. (100018156) (2005)



See Inset Sprowston 41E

The notation of the `Old Catton, Sprowston, Rackheath, Thorpe St Andrew Growth Triangle` forms part of the pre-submission content.

Growth Triangle boundary

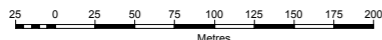
Area outside Local Plan boundary

See Inset Thorpe St Andrew 44D



Thorpe St Andrew (44A) Changes to Local Plan Proposals Map for Joint Core Strategy

Scale 1:5000



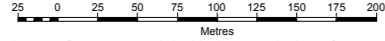
This map is reproduced from Ordnance Survey material with the permission of Ordnance Survey on behalf of the Controller of Her Majesty's Stationery Office. Crown copyright. Unauthorised reproduction infringes Crown copyright and may lead to prosecution or civil proceedings. (100018156) (2005)

See Inset Thorpe St Andrew 44B



Thorpe St Andrew (44B)
 Changes to Local Plan Proposals Map
 for Joint Core Strategy

Scale 1:5000



This map is reproduced from Ordnance Survey material with the permission of Ordnance Survey on behalf of the Controller of Her Majesty's Stationery Office. Crown copyright. Unauthorised reproduction infringes Crown copyright and may lead to prosecution or civil proceedings. (100018156) (2005)

Area outside
Local Plan boundary

The notation of the 'Old Catton, Sprowston, Rackheath, Thorpe St Andrew Growth Triangle' forms part of the pre-submission content.

Growth Triangle boundary

See Inset Thorpe St Andrew 44A

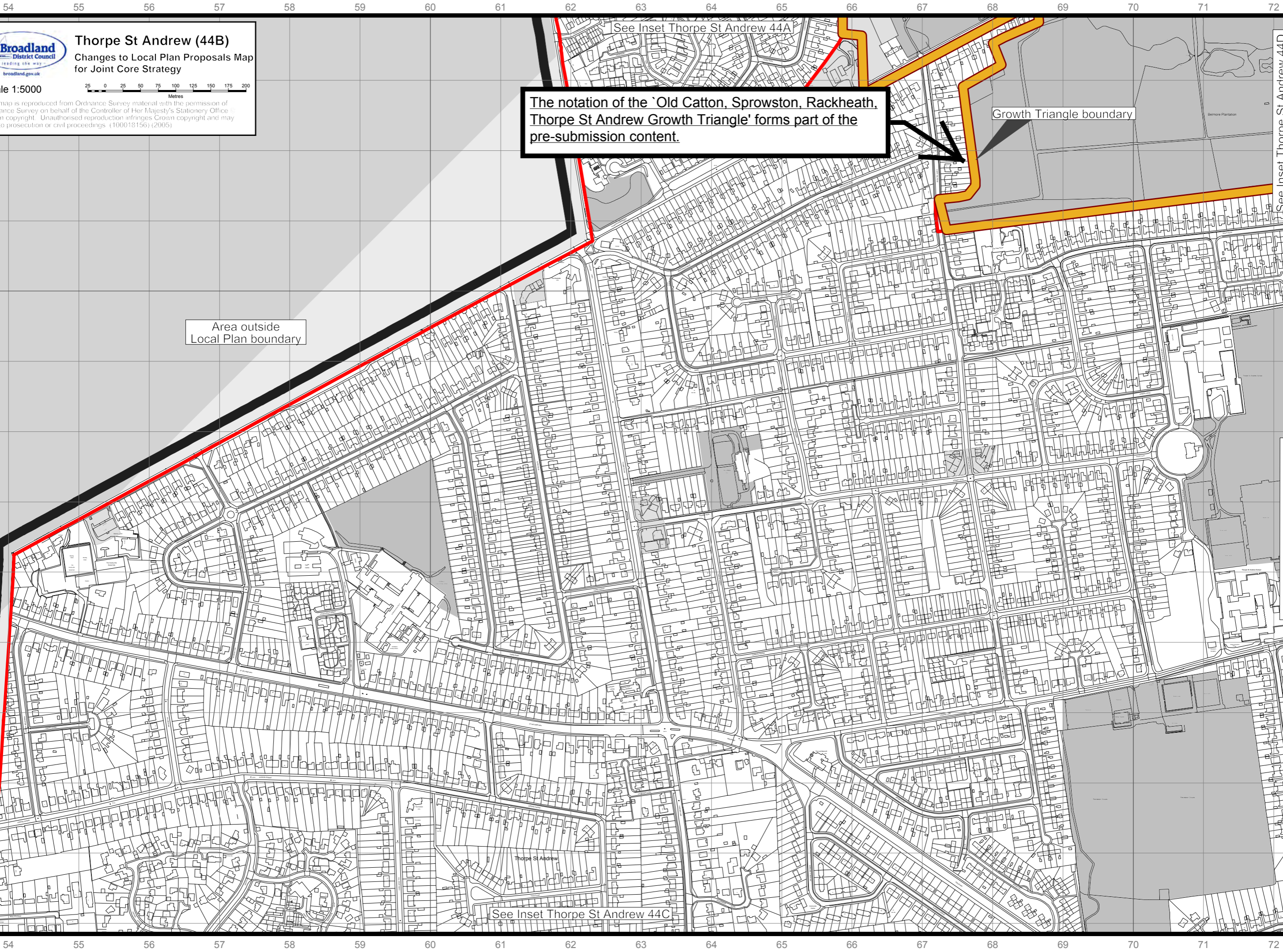
See Inset Thorpe St Andrew 44C

See Inset Thorpe St Andrew 44D

See Inset Thorpe St Andrew 44E

Thorpe St Andrew

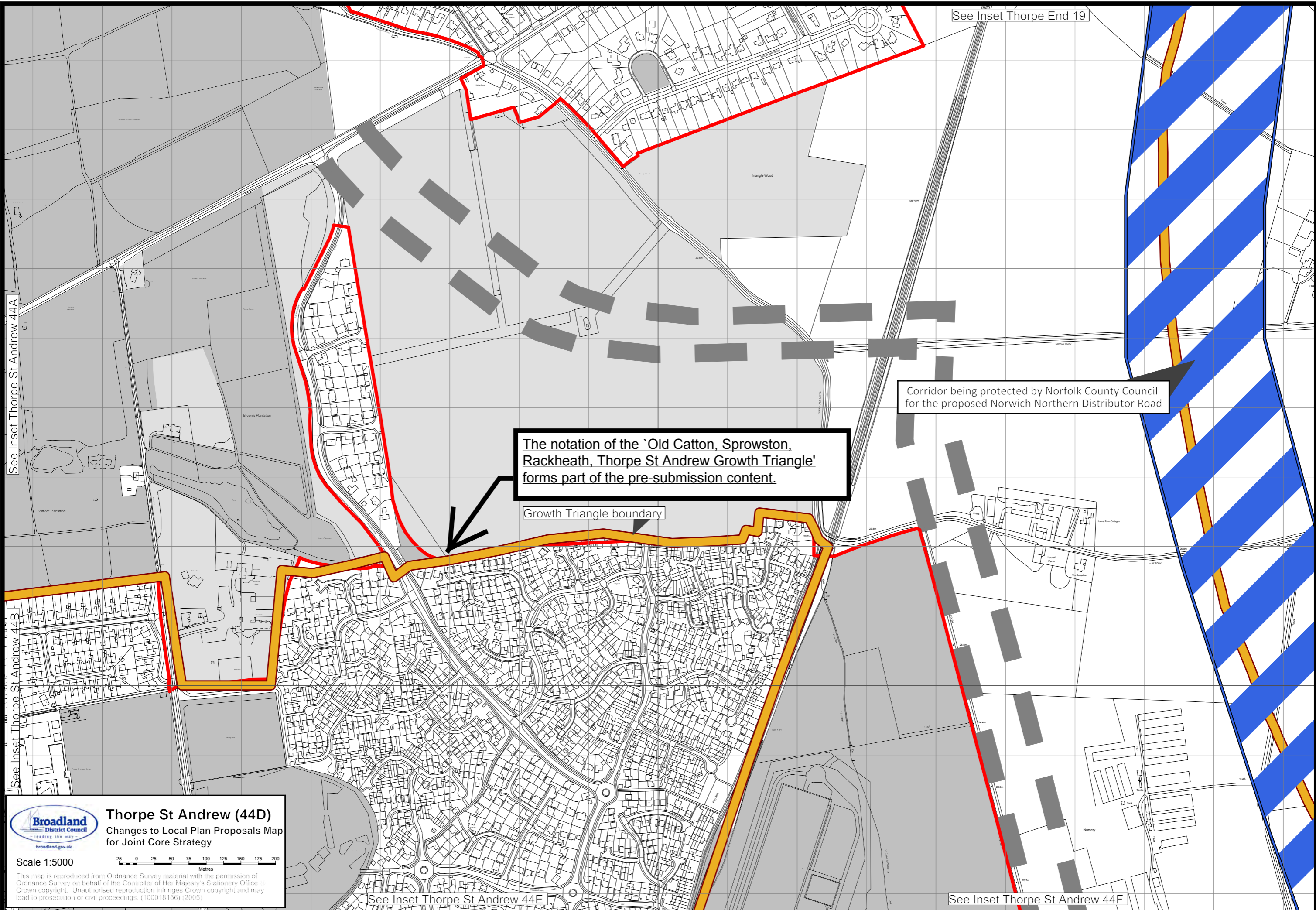
Service Plantation



71 72 73 74 75 76 77 78 79 80 81 82 83 84 85 86 87 88 89

09
08
07
06
05
04
03
02
01
00
99
98
97

09
08
07
06
05
04
03
02
01
00
99
98
97



See Inset Thorpe End 19

See Inset Thorpe St Andrew 44A

See Inset Thorpe St Andrew 44B

See Inset Thorpe St Andrew 44E

See Inset Thorpe St Andrew 44F

The notation of the 'Old Catton, Sprowston, Rackheath, Thorpe St Andrew Growth Triangle' forms part of the pre-submission content.

Growth Triangle boundary

Corridor being protected by Norfolk County Council for the proposed Norwich Northern Distributor Road

Broadland District Council
 —leading the way—
 broadland.gov.uk

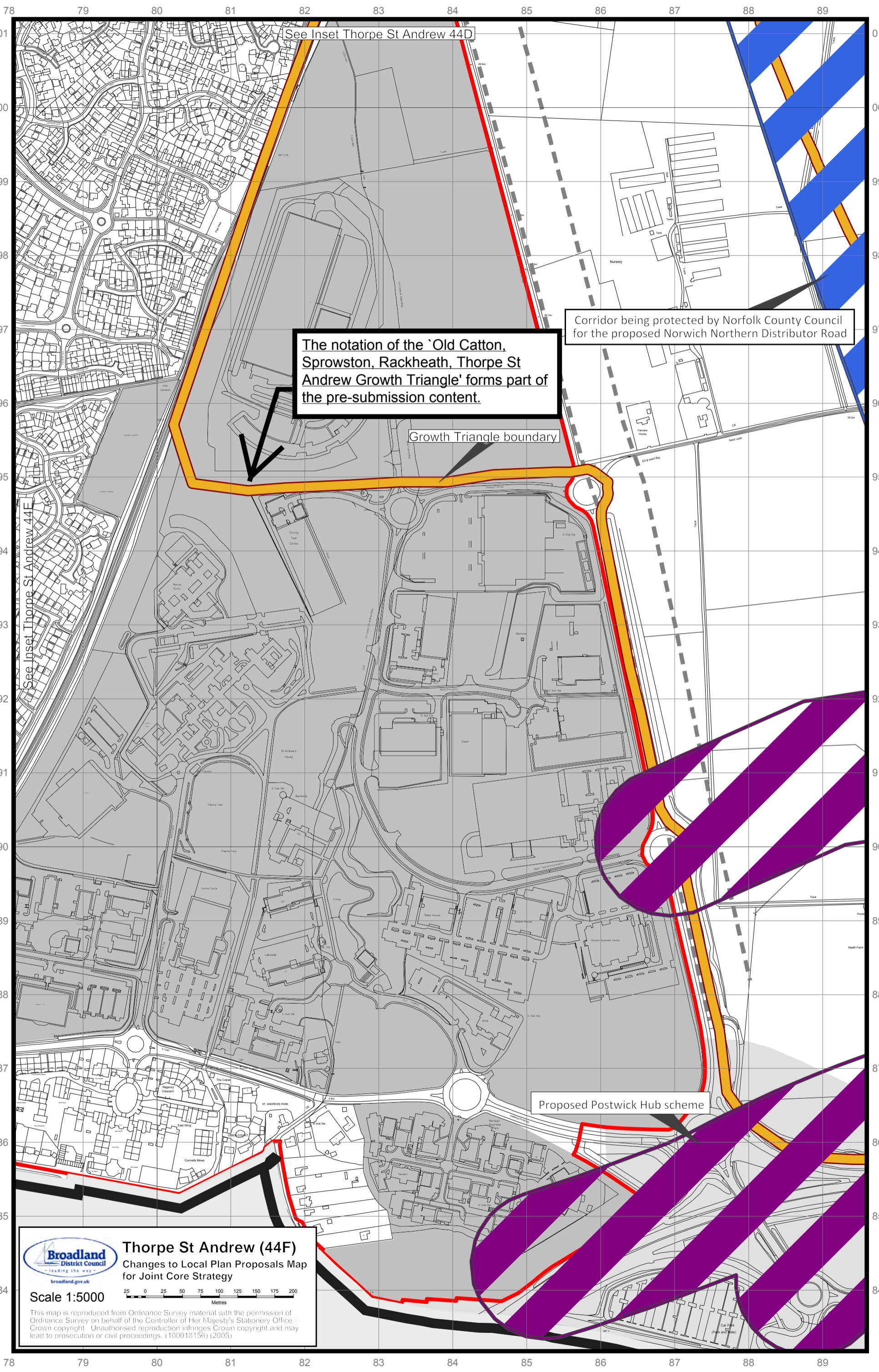
Thorpe St Andrew (44D)
 Changes to Local Plan Proposals Map for Joint Core Strategy

Scale 1:5000

25 0 25 50 75 100 125 150 175 200
 Metres

This map is reproduced from Ordnance Survey material with the permission of Ordnance Survey on behalf of the Controller of Her Majesty's Stationery Office. Crown copyright. Unauthorised reproduction infringes Crown copyright and may lead to prosecution or civil proceedings. (100018156) (2005)

71 72 73 74 75 76 77 78 79 80 81 82 83 84 85 86 87 88 89



The notation of the `Old Catton, Sprowston, Rackheath, Thorpe St Andrew Growth Triangle` forms part of the pre-submission content.

Corridor being protected by Norfolk County Council for the proposed Norwich Northern Distributor Road

Growth Triangle boundary

Proposed Postwick Hub scheme

Broadland District Council
 - leading the way -
 broadland.gov.uk

Thorpe St Andrew (44F)
 Changes to Local Plan Proposals Map
 for Joint Core Strategy

Scale 1:5000

25 0 25 50 75 100 125 150 175 200
 Metres

This map is reproduced from Ordnance Survey material with the permission of Ordnance Survey on behalf of the Controller of Her Majesty's Stationery Office. Crown copyright. Unauthorised reproduction infringes Crown copyright and may lead to prosecution or civil proceedings. (100018156) (2005)