










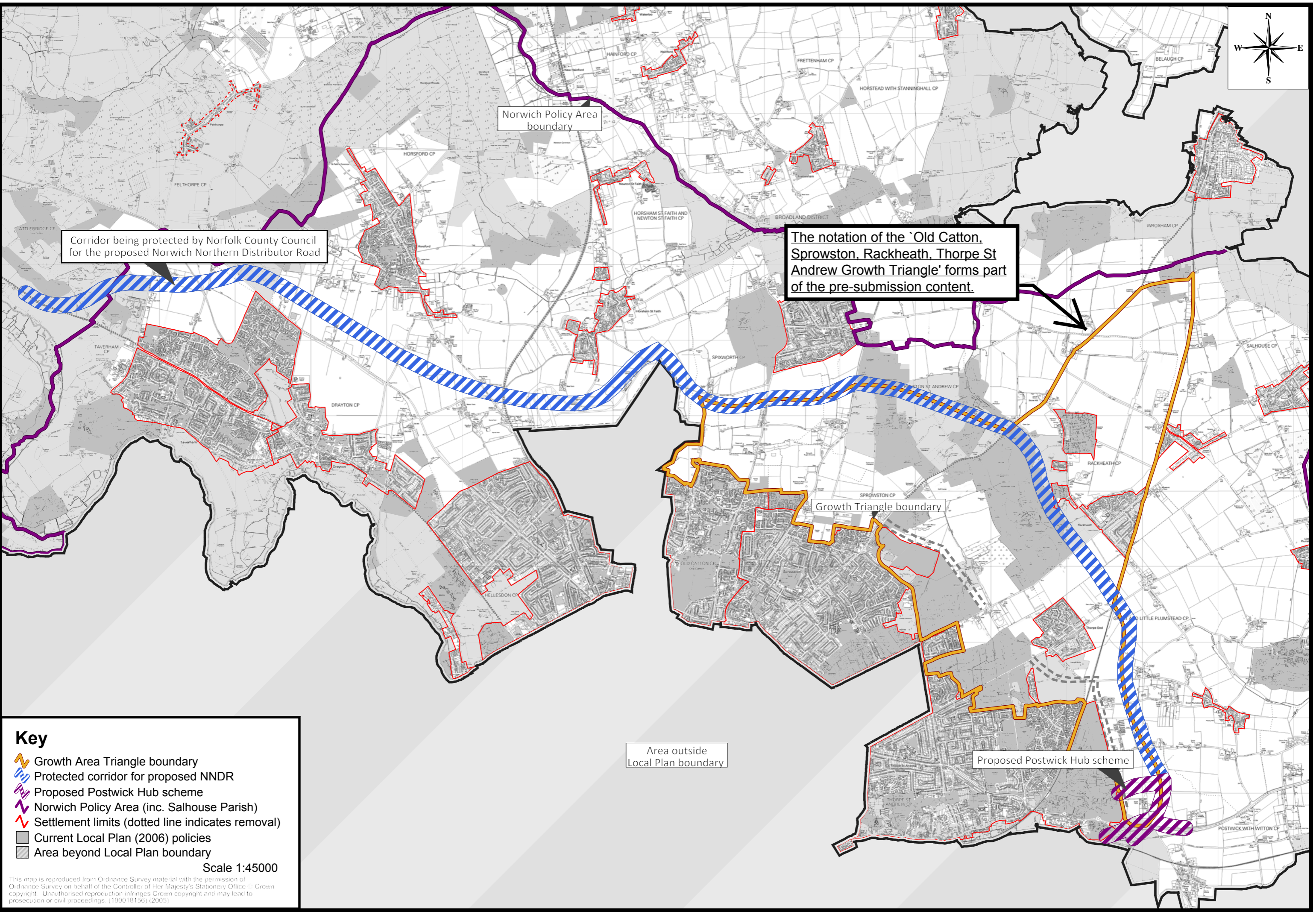
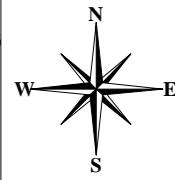
Changes to Local Plan Policies Maps for Joint Core Strategy

Annotated to show proposed submission notation (August 2012)

The Town and Country Planning (Local Planning) (England)
Regulations 2012

Key

-  Growth Area Triangle boundary
-  Protected corridor for proposed NNDR
-  Proposed Postwick Hub scheme
-  Norwich Policy Area (inc. Salhouse Parish)
-  Settlement limit (dotted line indicates proposed removal)
-  Current Local Plan (2006) policies
-  Area beyond Local Plan boundary



Corridor being protected by Norfolk County Council for the proposed Norwich Northern Distributor Road

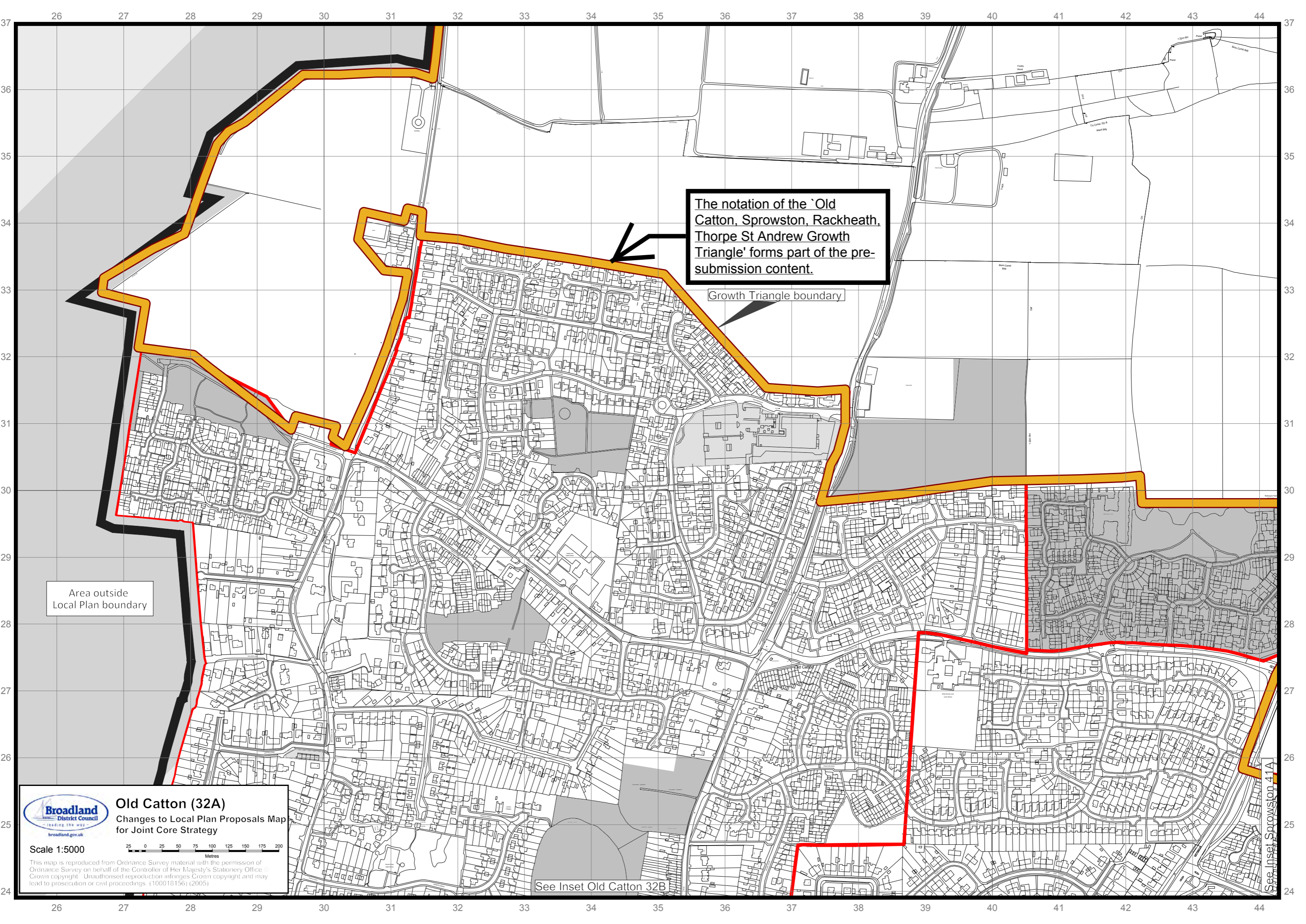
The notation of the 'Old Catton, Sprowston, Rackheath, Thorpe St Andrew Growth Triangle' forms part of the pre-submission content.

Key

- Growth Area Triangle boundary
- Protected corridor for proposed NNDR
- Proposed Postwick Hub scheme
- Norwich Policy Area (inc. Salhouse Parish)
- Settlement limits (dotted line indicates removal)
- Current Local Plan (2006) policies
- Area beyond Local Plan boundary

Scale 1:45000

This map is reproduced from Ordnance Survey material with the permission of Ordnance Survey on behalf of the Controller of Her Majesty's Stationery Office. Crown copyright. Unauthorised reproduction infringes Crown copyright and may lead to prosecution or civil proceedings. (100018156) (2005)



The notation of the `Old Catton, Sprowston, Rackheath, Thorpe St Andrew Growth Triangle` forms part of the pre-submission content.

Growth Triangle boundary

Area outside Local Plan boundary

Broadland District Council
Leading the way
broadland.gov.uk

Old Catton (32A)
Changes to Local Plan Proposals Map for Joint Core Strategy

Scale 1:5000

25 0 25 50 75 100 125 150 175 200
Metres

This map is reproduced from Ordnance Survey material with the permission of Ordnance Survey on behalf of the Controller of Her Majesty's Stationery Office. Crown copyright. Unauthorised reproduction infringes Crown copyright and may lead to prosecution or civil proceedings. (100018156) (2005)

See Inset Old Catton 32B

See Inset Sprowston 41A

The notation of the 'Old Catton, Sprowston, Rackheath, Thorpe St Andrew Growth Triangle' forms part of the pre-submission content.

Growth Triangle boundary

Corridor being protected by Norfolk County Council for the proposed Norwich Northern Distributor Road



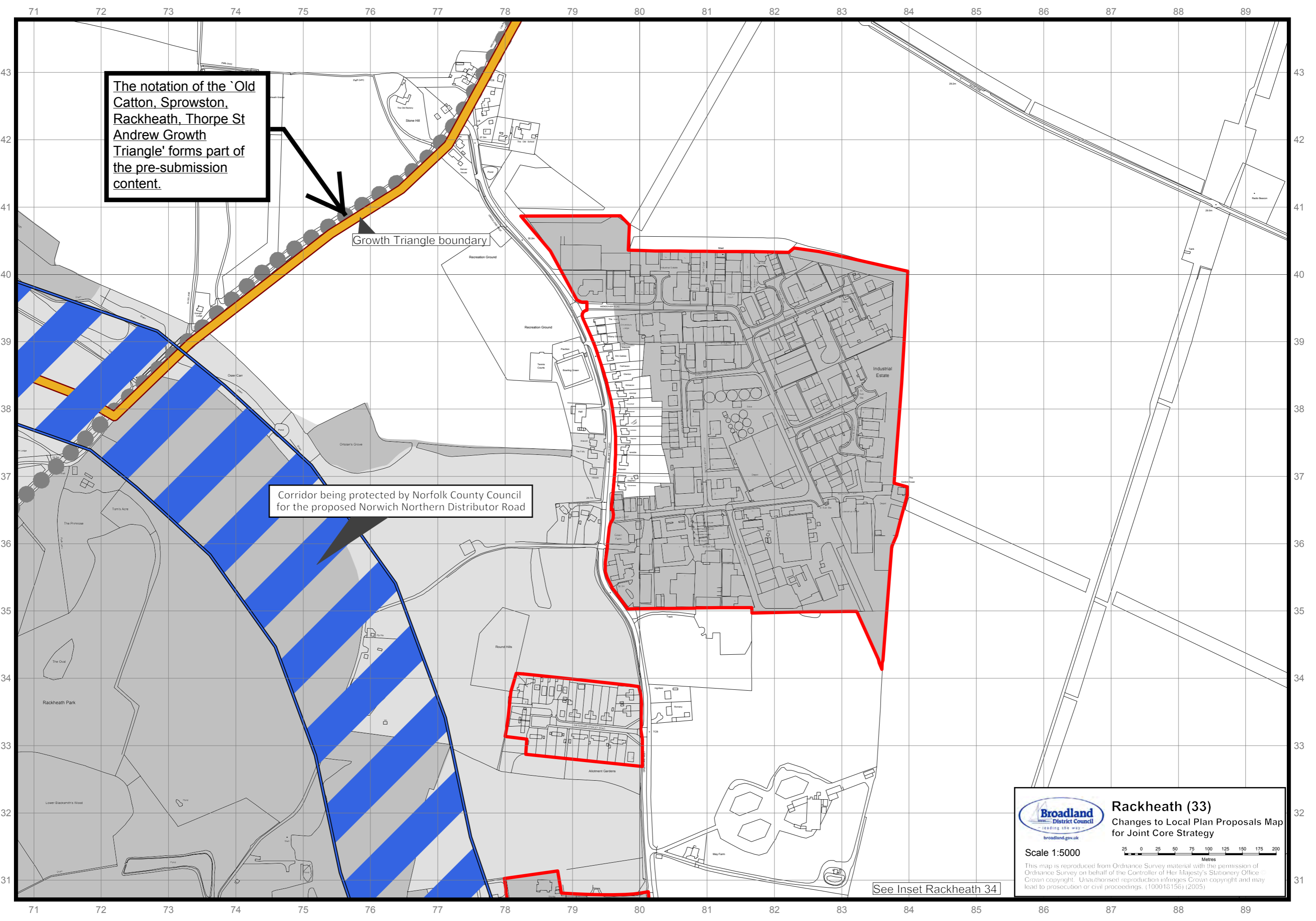
Rackheath (33)

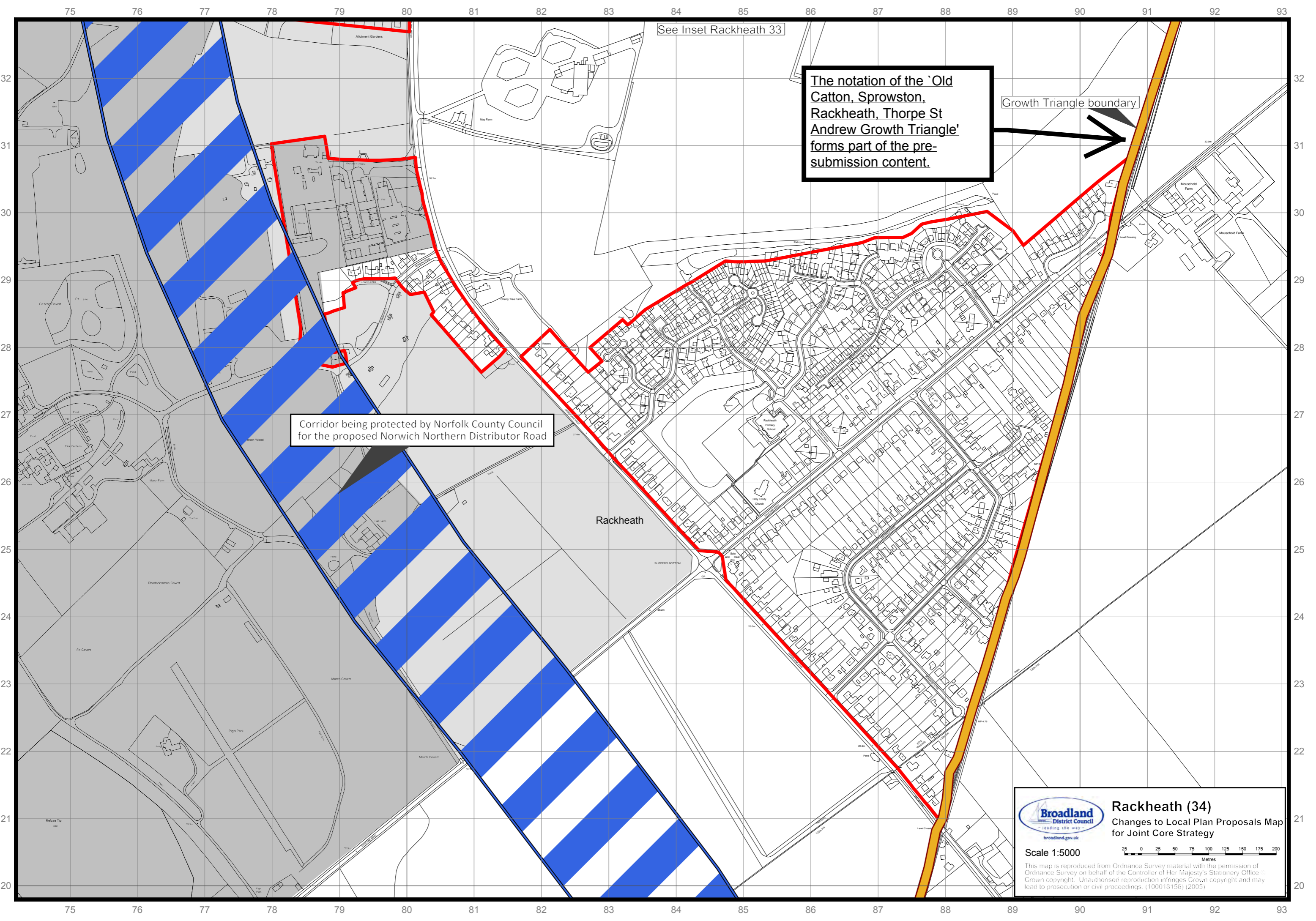
Changes to Local Plan Proposals Map for Joint Core Strategy

Scale 1:5000

This map is reproduced from Ordnance Survey material with the permission of Ordnance Survey on behalf of the Controller of Her Majesty's Stationery Office. Crown copyright. Unauthorised reproduction infringes Crown copyright and may lead to prosecution or civil proceedings. (100018156) (2005)

See Inset Rackheath 34





See Inset Rackheath 33

The notation of the 'Old Catton, Sprowston, Rackheath, Thorpe St Andrew Growth Triangle' forms part of the pre-submission content.

Growth Triangle boundary

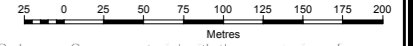
Corridor being protected by Norfolk County Council for the proposed Norwich Northern Distributor Road

Rackheath



Rackheath (34)
Changes to Local Plan Proposals Map for Joint Core Strategy

Scale 1:5000




This map is reproduced from Ordnance Survey material with the permission of Ordnance Survey on behalf of the Controller of Her Majesty's Stationery Office. Crown copyright. Unauthorised reproduction infringes Crown copyright and may lead to prosecution or civil proceedings. (100018156) (2005)

The notation of the 'Old Catton, Sprowston, Rackheath, Thorpe St Andrew Growth Triangle' forms part of the pre-submission content.

Growth Triangle boundary

See Inset Rackheath 34

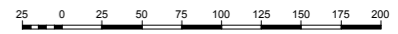


Broadland District Council
— leading the way —
broadland.gov.uk

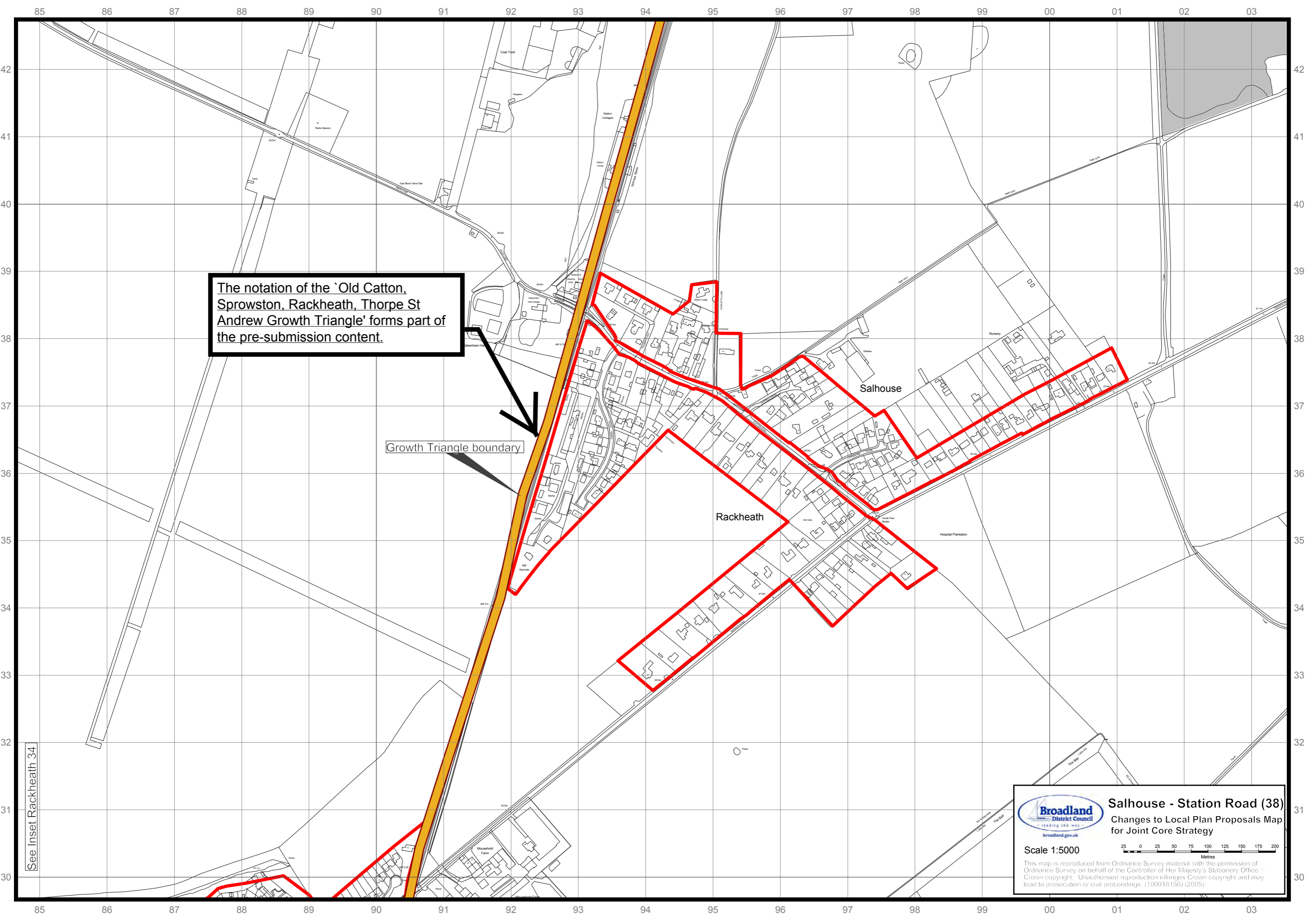
Salhouse - Station Road (38)

Changes to Local Plan Proposals Map for Joint Core Strategy

Scale 1:5000



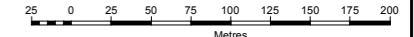
This map is reproduced from Ordnance Survey material with the permission of Ordnance Survey on behalf of the Controller of Her Majesty's Stationery Office. Crown copyright. Unauthorised reproduction infringes Crown copyright and may lead to prosecution or civil proceedings. (100018156) (2005)



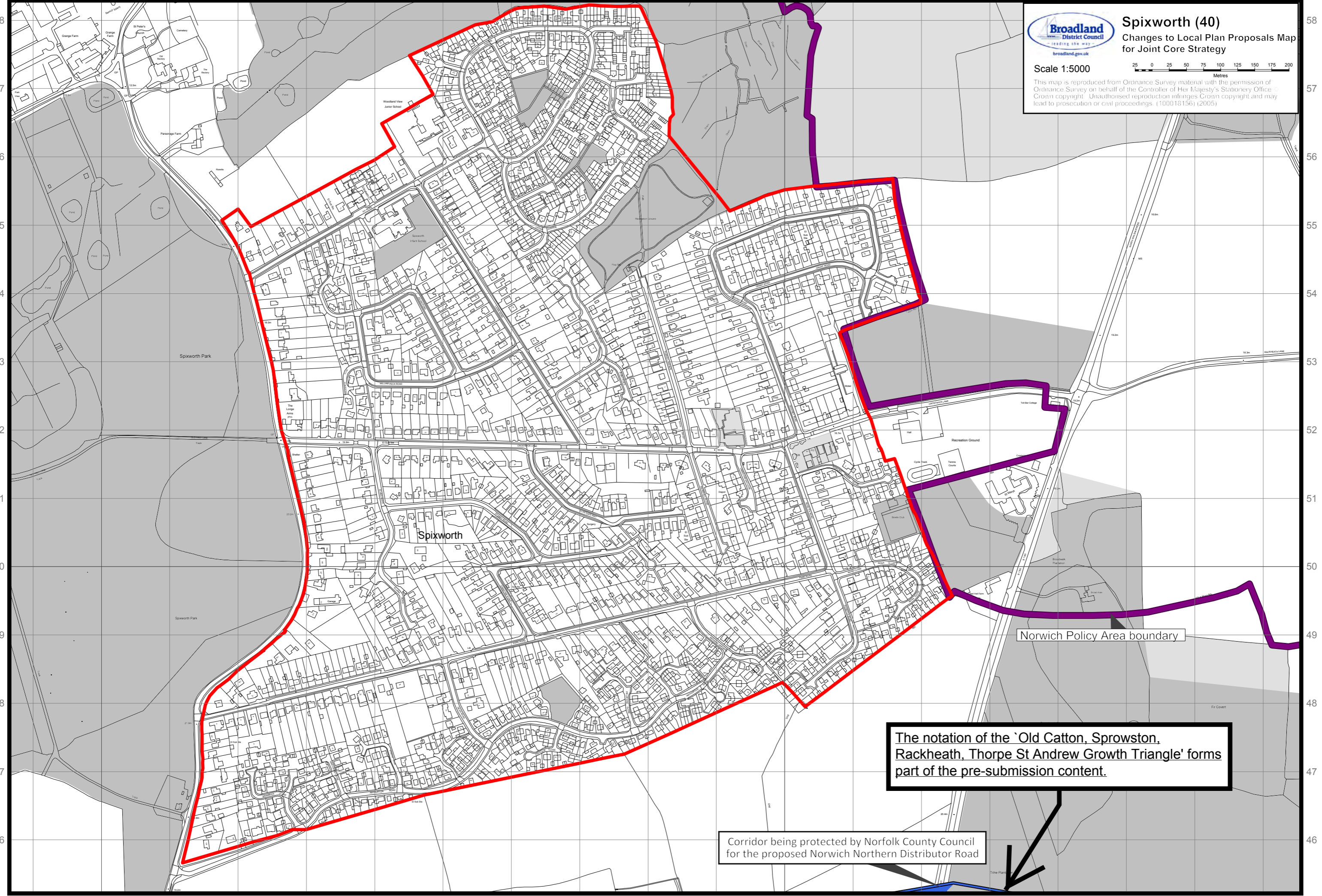


Spixworth (40) Changes to Local Plan Proposals Map for Joint Core Strategy

Scale 1:5000



This map is reproduced from Ordnance Survey material with the permission of Ordnance Survey on behalf of the Controller of Her Majesty's Stationery Office. Crown copyright. Unauthorised reproduction infringes Crown copyright and may lead to prosecution or civil proceedings. (100018156) (2005)



The notation of the 'Old Catton, Sprowston, Rackheath, Thorpe St Andrew Growth Triangle' forms part of the pre-submission content.

Corridor being protected by Norfolk County Council for the proposed Norwich Northern Distributor Road